

MIDWEST LAND GROUP PRESENTS

16 ACRES

NEOSHO COUNTY, KS

24700 DOUGLAS ROAD, CHANUTE, KS, 66720



MidwestLandGroup.com

MIDWEST LAND GROUP IS HONORED TO PRESENT

HOME AND ACREAGE JUST OUTSIDE OF CHANUTE, KANSAS

This spacious 4 bedroom, 2 bathroom home offers over 2,000 square feet of comfortable living space, perfectly situated on 16 +/- acres of productive land. The home provides ample room for family living, entertaining, or hosting guests, all while enjoying the privacy and functionality of a rural setting.

The property is exceptionally well-suited for livestock and equestrian use, featuring a lighted arena, shop, barn,

working pens, and quality pipe fencing throughout. The farm boasts a healthy, established stand of grass ideal for grazing or hay production, along with a large pond that adds both utility and recreational appeal.

Whether you're looking for a turnkey horse property, a small ranch operation, or a peaceful country homestead, this property offers the improvements, acreage, and natural features to support a wide range of uses.



PROPERTY FEATURES

COUNTY: **NEOSHO** | STATE: **KANSAS** | ACRES: **16**

- Spacious 4 bedroom, 2 bathroom home
- Arena with lights
- Pond
- Shop
- Barn
- Pipe fencing
- Tack room
- Blacktop road
- Multiple outbuildings
- 5 miles from Chanute, KS



SPACIOUS 4 BED, 2 BATH HOME



ADDITIONAL INTERIOR PHOTOS



PIPE FENCING



ARENA WITH LIGHTS



SHOP & BARN



16 +/- ACRES

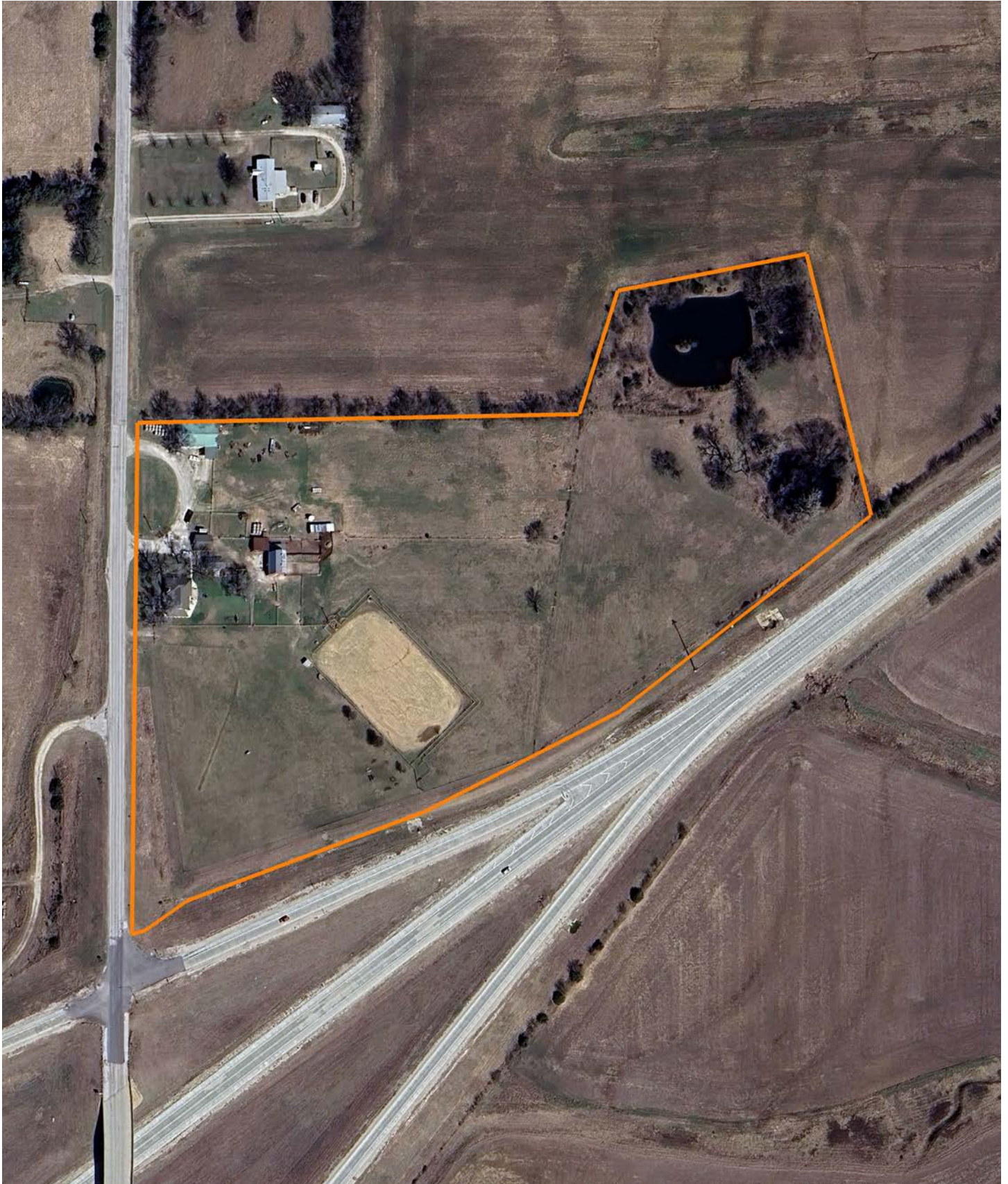
The farm boasts a healthy, established stand of grass ideal for grazing or hay production, along with a large pond that adds both utility and recreational appeal.



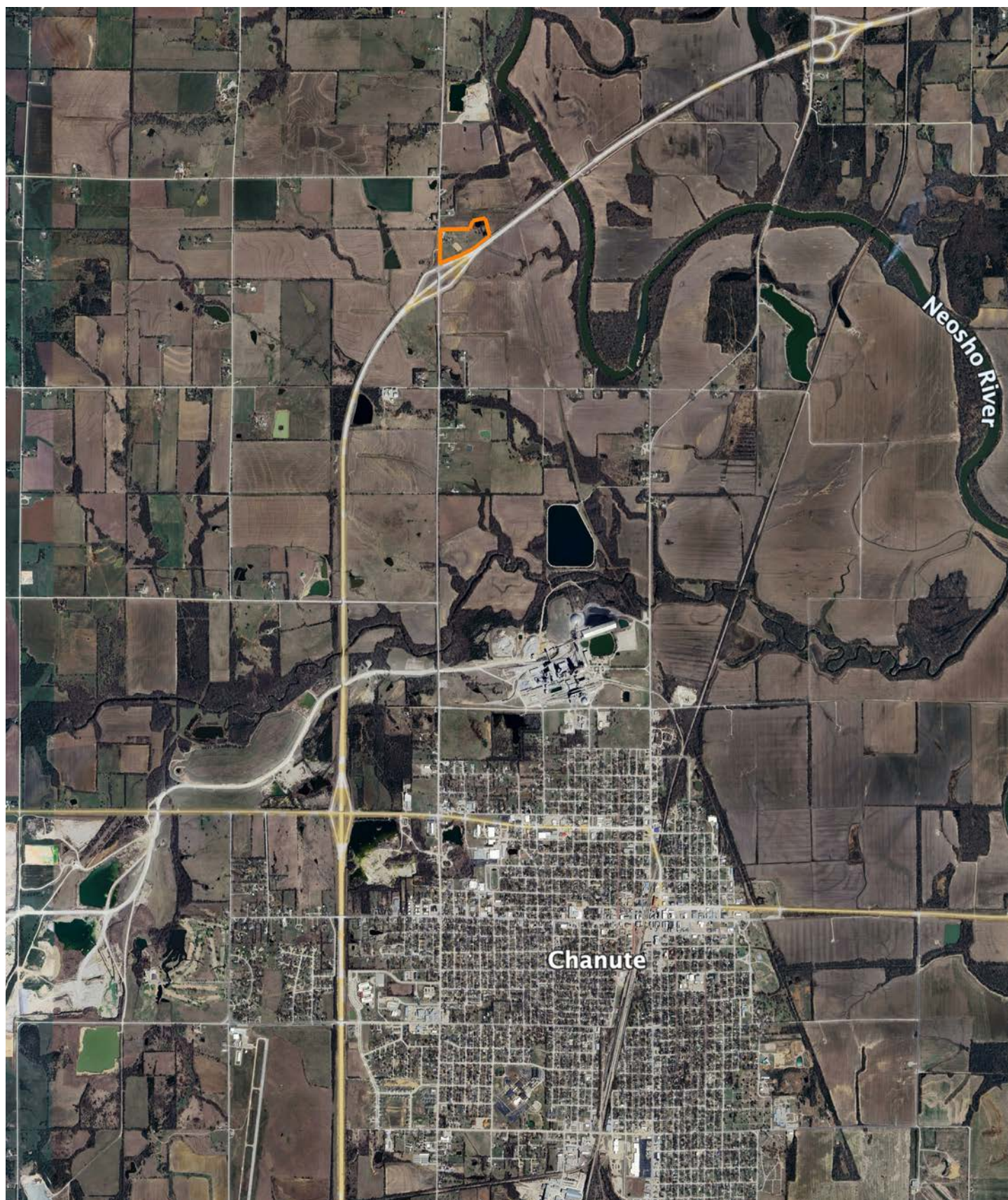
ADDITIONAL PHOTOS



AERIAL MAP



OVERVIEW MAP



AGENT CONTACT

Ben Jacks has been an avid outdoorsman since he was a boy. His dad would take him and his brother out to hunt and fish every chance he got. Between that and years of bow hunting, Ben learned the process of managing hunting properties. He loves to assess a property and find the potential in a piece of land that someone else might not have seen. Ben was born on a military base in North Carolina and raised in northeast Oklahoma. While in school, he worked on a ranch, where he grew a great respect for farmers and ranchers. He moved to Kansas for college and to continue his baseball career. He went to Neosho County Community College and graduated from Emporia State University, having played baseball at each.

After helping a friend acquire a piece of property, he caught the land real estate bug and hasn't looked back once since. Driven by his passion to help people, Ben offers clients a hard-working, trustworthy, and dedicated agent who will help them throughout the entire process. When he's not working or spending time with family, you can find him out in the woods hunting, fishing, managing hunting properties, or golfing. He's a member of Ducks Unlimited, QDMA, and the First Baptist Church in Chanute, Kansas, where he resides with his son Gunner and two large, active dogs. Contact Ben today to experience the Midwest Land Group difference!



BEN JACKS, LAND AGENT
620.605.3175
BJacks@MidwestLandGroup.com



MidwestLandGroup.com

This property is being offered by Midwest Land Group, LLC. 913.674.8010. All information provided by Midwest Land Group, LLC or their agents was acquired from sources deemed accurate and reliable, however we do not warrant its accuracy or completeness. Midwest Land Group, LLC assumes no liability for error, omission or investment results. Midwest Land Group, LLC. Licensed in Alabama, Arkansas, Illinois, Indiana, Iowa, Kansas, Kentucky, Louisiana, Minnesota, Mississippi, Missouri, Montana, Nebraska, Ohio, Oklahoma, South Dakota, Tennessee, Texas, Wisconsin, and Wyoming.