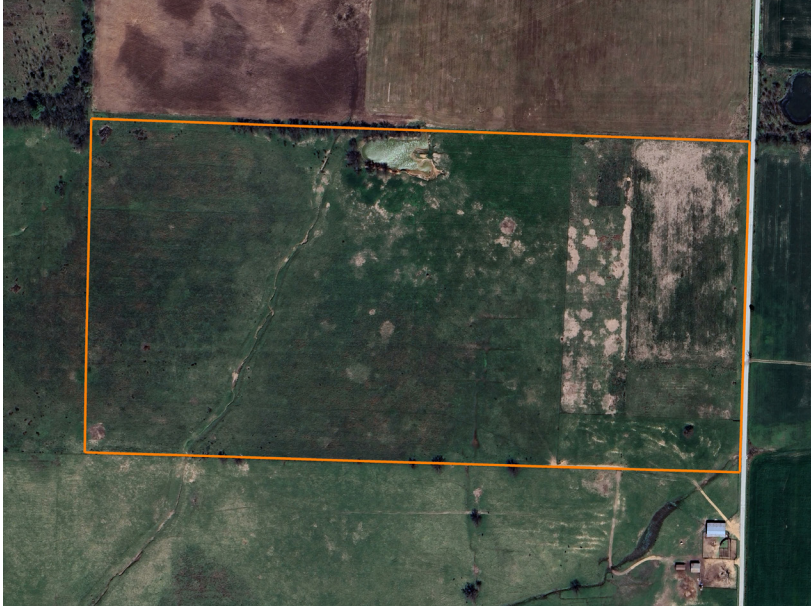


LAND FOR SALE

## TRACT 2: VERSATILE 80 +/- ACRE FARM WITH BUILD SITES

COUNTY: **JASPER**  
STATE: **MISSOURI**  
ACRES: **80**



### PROPERTY FEATURES

- Currently in grass with an option for tillable
- Primarily Class II and III soils
- Large pond
- Electric available
- Wet-weather creek
- Multiple build sites
- Blacktop road frontage
- 6 minutes to Sarcoxie
- Survey needed
- 14 minutes to Joplin Regional Stockyards
- 20 minutes to Mount Vernon
- 24 minutes to Carthage



For more information, contact:

**KELLEN BOUNOUS**, Land Agent

**417.313.3123** | [KBounous@MidwestLandGroup.com](mailto:KBounous@MidwestLandGroup.com)

**MidwestLandGroup.com**



This property is being offered by Midwest Land Group, LLC, 7111 W. 151st Street, Ste. 27, Overland Park, KS 66223, 913.674.8010. Licensed in AL, AR, IA, IL, IN, KS, KY, LA, MN, MO, MS, MT, NE, OH, OK, SD, TN, TX, WI, and WY.