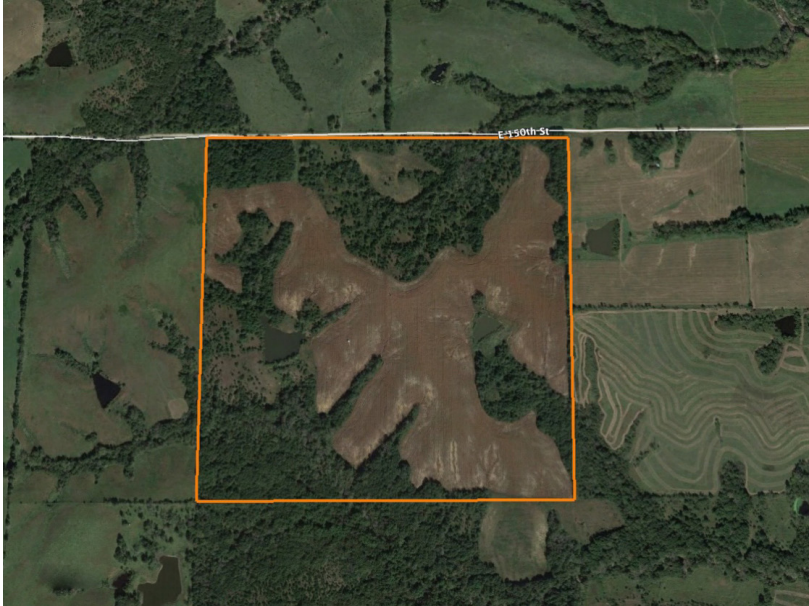


LAND FOR SALE

GORGEOUS 80 ACRE FARM WITH GREAT DEER HUNTING IN BUCHANAN COUNTY

COUNTY: **BUCHANAN**
STATE: **MISSOURI**
ACRES: **80**



PROPERTY FEATURES

- Prime property to build a home or cabin
- Gorgeous views
- Secluded southern exposure build site
- 25 minutes from I-29 and highway 152
- Well-maintained road only 1/4 mile to asphalt
- Great mix of open pasture and timber
- Beautiful 5 acre lake
- Great hunting
- Strong deer and turkey population
- Fertile soils for hay or row crop production



For more information, contact:

KELLEN BOUNOUS, Land Agent

417.313.3123 | KBounous@MidwestLandGroup.com

MidwestLandGroup.com



This property is being offered by Midwest Land Group, LLC, 7111 W. 151st Street, Ste. 27, Overland Park, KS 66223, 913.674.8010. Licensed in AL, AR, IA, IL, IN, KS, KY, LA, MN, MO, MS, MT, NE, OH, OK, SD, TN, TX, WI, and WY.

LAND FOR SALE

GORGEOUS 80 ACRE FARM WITH GREAT DEER HUNTING IN BUCHANAN COUNTY

COUNTY: **BUCHANAN**
STATE: **MISSOURI**
ACRES: **80**



PROPERTY FEATURES

- Prime property to build a home or cabin
- Gorgeous views
- Secluded southern exposure build site
- 25 minutes from I-29 and highway 152
- Well-maintained road only 1/4 mile to asphalt
- Great mix of open pasture and timber
- Beautiful 5 acre lake
- Great hunting
- Strong deer and turkey population
- Fertile soils for hay or row crop production



For more information, contact:

KELLEN BOUNOUS, Land Agent

417.313.3123 | KBounous@MidwestLandGroup.com

MidwestLandGroup.com



This property is being offered by Midwest Land Group, LLC, 7111 W. 151st Street, Ste. 27, Overland Park, KS 66223, 913.674.8010. Licensed in AL, AR, IA, IL, IN, KS, KY, LA, MN, MO, MS, MT, NE, OH, OK, SD, TN, TX, WI, and WY.

LAND FOR SALE

GORGEOUS 80 ACRE FARM WITH GREAT DEER HUNTING IN BUCHANAN COUNTY

COUNTY: **BUCHANAN**
STATE: **MISSOURI**
ACRES: **80**



PROPERTY FEATURES

- Prime property to build a home or cabin
- Gorgeous views
- Secluded southern exposure build site
- 25 minutes from I-29 and highway 152
- Well-maintained road only 1/4 mile to asphalt
- Great mix of open pasture and timber
- Beautiful 5 acre lake
- Great hunting
- Strong deer and turkey population
- Fertile soils for hay or row crop production



For more information, contact:

KELLEN BOUNOUS, Land Agent

417.313.3123 | KBounous@MidwestLandGroup.com

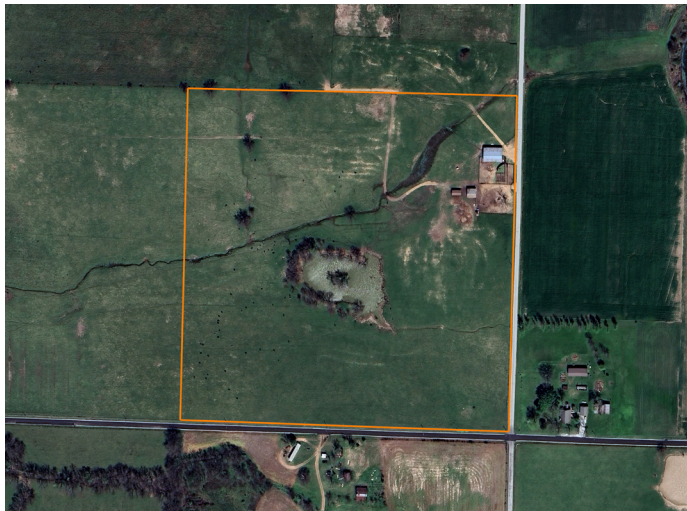
MidwestLandGroup.com



This property is being offered by Midwest Land Group, LLC, 7111 W. 151st Street, Ste. 27, Overland Park, KS 66223, 913.674.8010. Licensed in AL, AR, IA, IL, IN, KS, KY, LA, MN, MO, MS, MT, NE, OH, OK, SD, TN, TX, WI, and WY.

LAND FOR SALE

TRACT 4: 40 +/- ACRE HOBBY FARM WITH BUILD SITES



PROPERTY FEATURES

- Currently in grass with an option for tillable
- Primarily Class II and III soils
- Livestock barn and additional outbuildings
- Cattle working area
- Water well on site
- Electric available/on site
- Large pond
- Wet-weather creek
- Blacktop road frontage on two sides
- Multiple build sites
- Survey needed



For more information, contact:

KELLEN BOUNOUS, Land Agent

417.313.3123 | KBounous@MidwestLandGroup.com

MidwestLandGroup.com

BUYERS, SELLERS, AND LAND – CONNECTED

This property is being offered by Midwest Land Group, LLC, 7111 W. 151st Street, Ste. 27, Overland Park, KS 66223, 913.674.8010.
Licensed in AL, AR, IA, IL, IN, KS, KY, LA, MN, MO, MS, MT, NE, OH, OK, SD, TN, TX, WI, and WY.



COUNTY: **JASPER**

STATE: **MISSOURI**

ACRES: **40**

