

MIDWEST LAND GROUP PRESENTS



GRUNDY COUNTY, MO

61.4 ACRES



MidwestLandGroup.com

MIDWEST LAND GROUP IS HONORED TO PRESENT

RECREATIONAL GEM IN GRUNDY COUNTY

This 61.4 +/- acre property is the place if you are looking for your own slice of deer and turkey hunting heaven! It is conveniently located just north of Trenton, Missouri, and right off Highway 65. Talk about a stellar location and area known for great hunting!

At the north end of the property, you are greeted by a newer 30'x50' shop building. It is super handy for storing gear and equipment. It even sets up well to be finished out with living quarters for a place to stay. An electric meter is in place, and rural water runs along the road, making it a real possibility of building your dream home or cabin. Beyond the building, you will discover your very own hunting paradise.

The property literally has it all and features a great mix of timbered ridges, thick cover, open areas, food plots, ponds, and creeks. It is very diverse and jam-packed with great hunting locations. You will fall in love with the large food plot located in the center of the farm with amazing hilltop views. Access throughout the land is incredible, with an established trail system that allows you to sneak to and from hunting blinds and stands. There is plenty of room to spread out family and friends for a deer and turkey hunt camp. Check out the big bucks and turkeys in the trail camera photos!

This property is set up and ready to enjoy from day one! Contact Skyler Wirsig at (816) 500-0168 for more information or to schedule a showing.



PROPERTY FEATURES

COUNTY: **GRUNDY** | STATE: **MISSOURI** | ACRES: **61.4**

- Mature hardwood ridges and draws
- Great cover and cedar thickets
- Ponds and creeks
- Food plot locations
- Awesome access points
- Incredible trail system
- Deer and turkey hunting
- 15 minutes to Trenton
- 25 miles to Iowa
- 2 hours to the Kansas City area

MATURE HARDWOOD RIDGES AND DRAWS



PONDS AND CREEKS



INCREDIBLE TRAIL SYSTEM



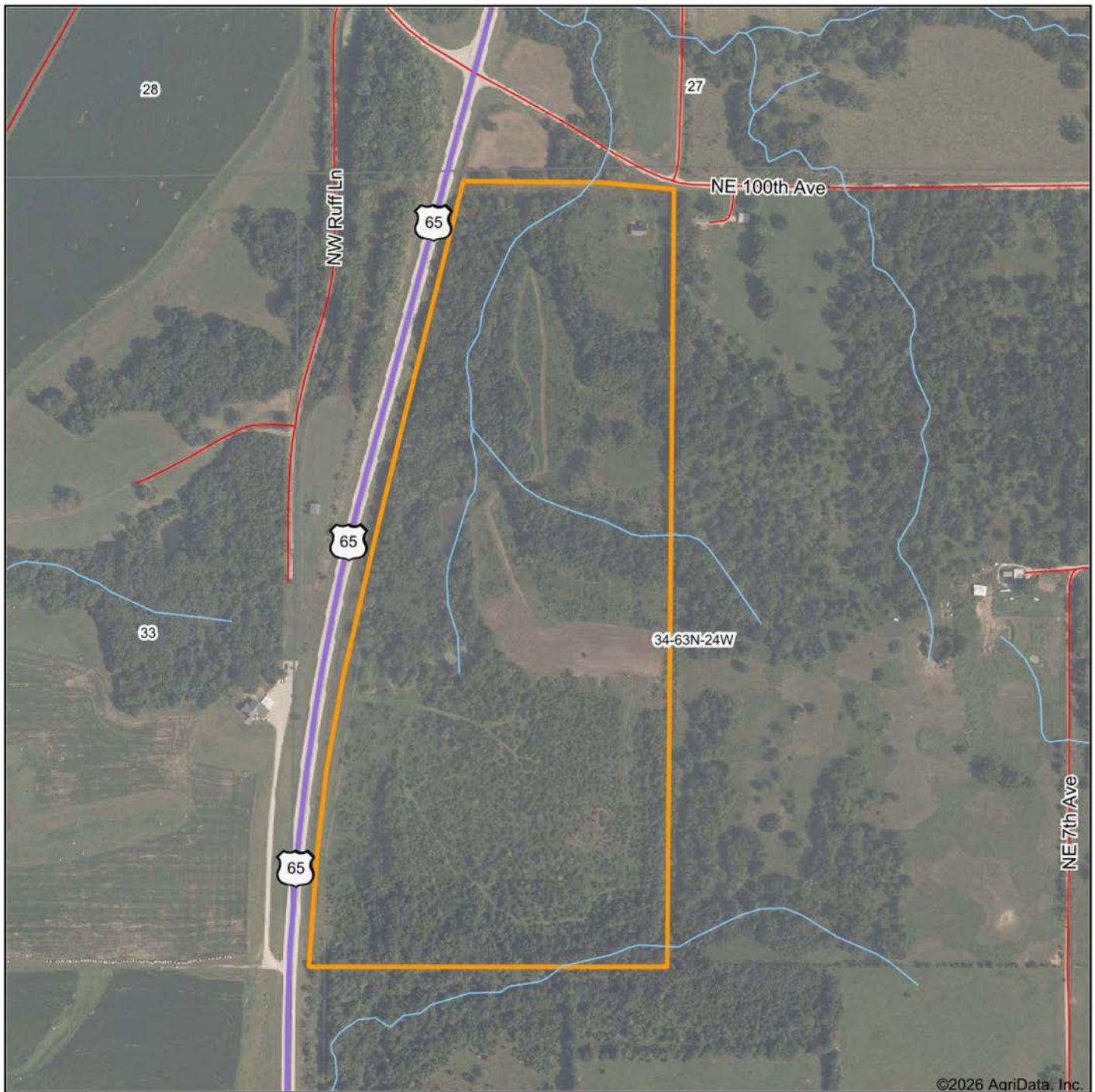
DEER AND TURKEY HUNTING



30'X50' SHOP BUILDING



AERIAL MAP



Maps Provided By:



© AgriData, Inc. 2025 www.AgriDataInc.com

Boundary Center: 40° 13' 2.47, -93° 35' 32.78

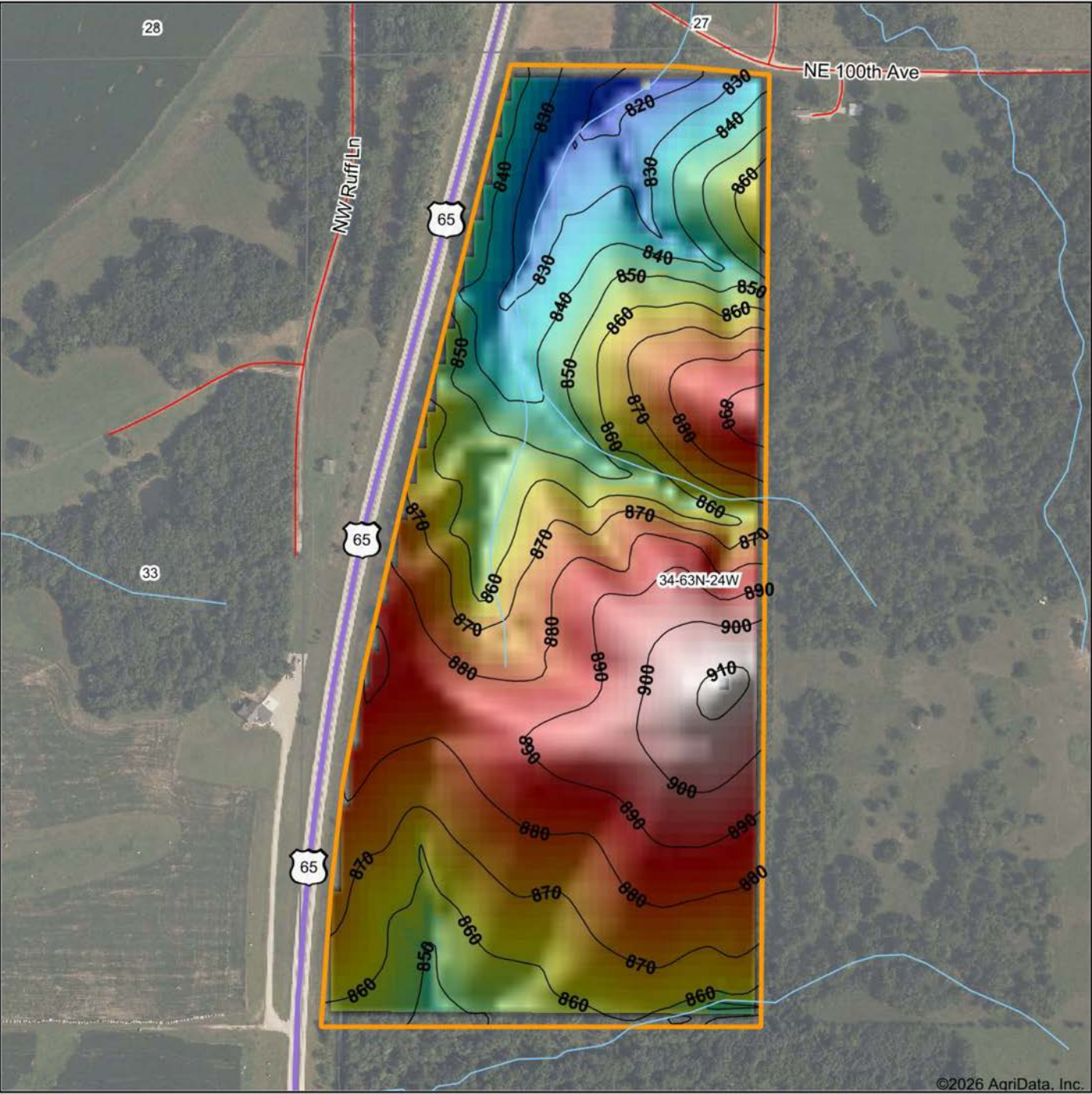
34-63N-24W
Grundy County
Missouri

0ft 529ft 1059ft



1/20/2026

HILLSHADE MAP



Maps Provided By:



© AgriData, Inc. 2025 www.AgriDataInc.com

Source: USGS 10 meter dem
Interval(ft): 10
Min: 813.6
Max: 911.8
Range: 98.2
Average: 867.3
Standard Deviation: 21.72 ft

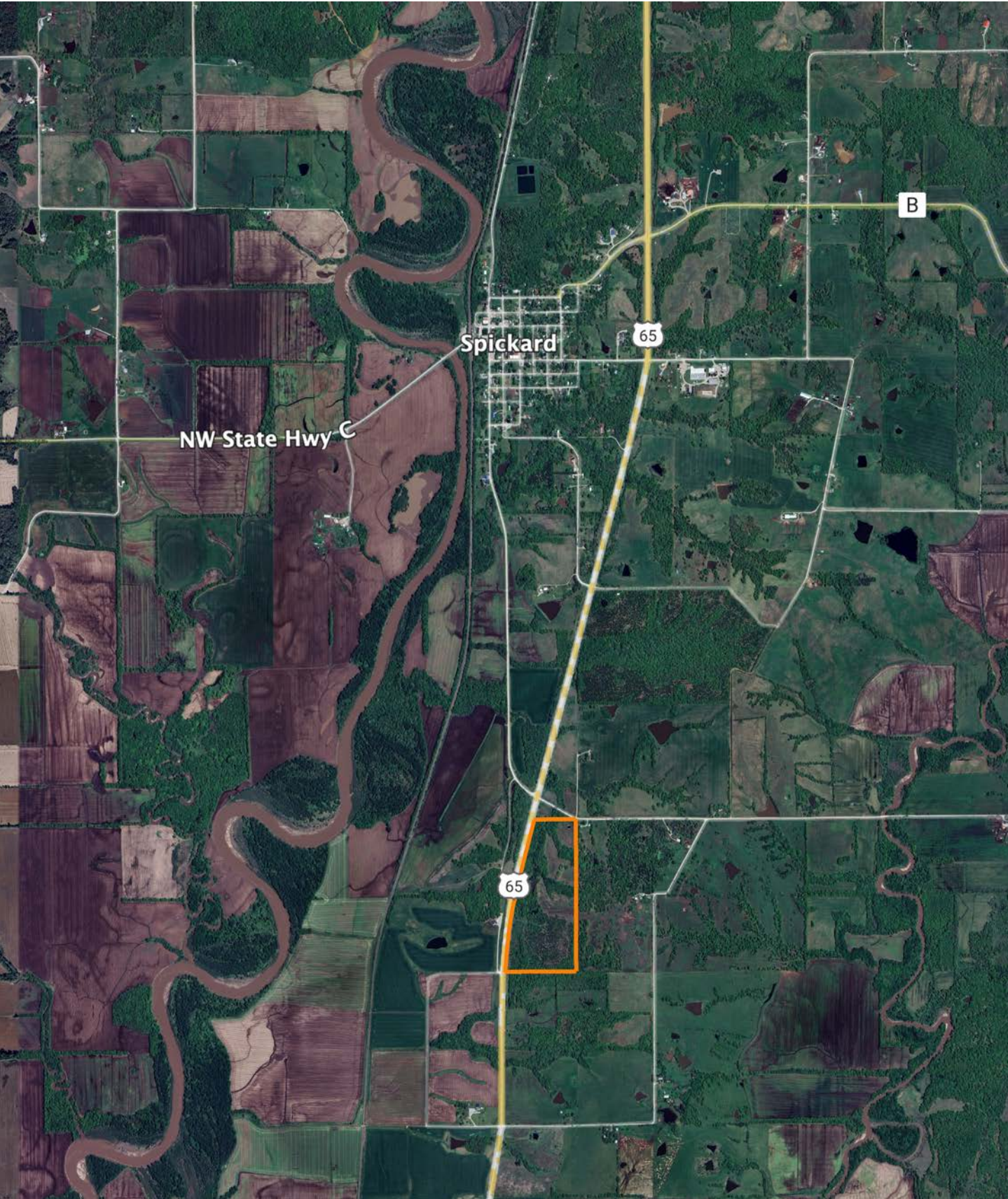


1/20/2026

34-63N-24W
Grundy County
Missouri

Boundary Center: 40° 13' 2.47, -93° 35' 32.78

OVERVIEW MAP



AGENT CONTACT

Skyler Wirsig is a seasoned steward of the land with a firm focus on developing and managing agricultural properties. Over 15 years, he has gained invaluable experience filming and hunting for the Outdoor Channel's Heartland Bowhunter, which has earned several accolades under his watch.

Hailing from Kansas City, Missouri, Skyler graduated from William Jewell College with degrees in Business Administration and Critical Thought & Inquiry. His previous role as an operations manager, handling sales and customer relationships across 20 countries, enhances his effectiveness as a real estate agent.

A dedicated sportsman, Skyler proudly holds the Archery Missouri State Record for an 8-point whitetail. Despite his professional accomplishments, he remains approachable, enjoying fishing, sports, and travel with his family. Skyler also volunteers for the Wounded Warriors in Action Foundation. Residing on his farm in Grain Valley, Missouri, with his wife and sons, Skyler brings a wealth of expertise and a down-to-earth attitude to land sales in the Midwest.



SKYLER WIRSIG

LAND AGENT

816.500.0168

SWirsig@MidwestLandGroup.com



MidwestLandGroup.com

This property is being offered by Midwest Land Group, LLC. 913.674.8010. All information provided by Midwest Land Group, LLC or their agents was acquired from sources deemed accurate and reliable, however we do not warrant its accuracy or completeness. Midwest Land Group, LLC assumes no liability for error, omission or investment results. Midwest Land Group, LLC. Licensed in Alabama, Arkansas, Illinois, Indiana, Iowa, Kansas, Kentucky, Louisiana, Minnesota, Mississippi, Missouri, Montana, Nebraska, Ohio, Oklahoma, South Dakota, Tennessee, Texas, Wisconsin, and Wyoming.