

MIDWEST LAND GROUP PRESENTS

477 ACRES IN

GRAY COUNTY KANSAS



MidwestLandGroup.com

MIDWEST LAND GROUP IS HONORED TO PRESENT

THREE IRRIGATED GRAY COUNTY CIRCLES

This productive irrigated farm consists of three contiguous quarters of 477 acres located in western Gray County, Kansas, just four miles south of Charleston. The property includes the south half of Section 13, Township 26 South, Range 31 West, and extends south across N Road into the northeast quarter of Section 10. The contiguity of these three quarters creates an efficient, large-scale farming operation in a highly desirable agricultural area.

The sale includes 100 percent of the seller's owned mineral rights, immediate possession of the current crops, including the planted wheat, and all irrigation equipment. The farm has been meticulously maintained by the current owner and reflects exceptional pride of ownership throughout.

Improvements on the southeast quarter include a new irrigation well drilled to approximately 260 feet, along with a new pump and electric motor. Both pivots on the half section are eight tower T&L center pivots, while the northeast quarter is irrigated by a seven tower Zimmatic pivot. The southwest and northeast quarters are each equipped with brand-new electric motors, further enhancing operational reliability.

Approximately \$18,000 worth of manure is in two corners of the property and will transfer to the buyer, offering immediate fertility value, and is another show of the kind of quality farming history this land has had. The southeast and northeast quarters are currently in second year alfalfa, while the southwest quarter is planted to wheat.

Water is a standout feature of this farm. All three water rights have places of use across the property, totaling 408 authorized irrigated acres with a combined 272 authorized acre-feet. Authorized pumping rates include 995 gallons per minute on the southwest quarter, 900 gallons per minute on the southeast quarter, and 855 gallons per minute on the northeast quarter, providing excellent capacity to support long-term irrigated production.

This is a rare opportunity to acquire a well-improved, contiguous irrigated farm offering reliable water, high-quality improvements, and immediate income in western Kansas. Ideal for both owner operators seeking productive irrigated acres and investors focused on long-term stability.



PROPERTY FEATURES

COUNTY: **GRAY** | STATE: **KANSAS** | ACRES: **477**

- S2 13-26-31
- NE4 10-26-31
- Immediate possession
- 100% seller mineral rights
- 100% seller water rights
- All irrigation equipment included
- 260 ft. well
- Continuous location
- Buyer takes wheat crop
- 3 circle pivots
- \$18,000 of manure
- WR# 28809-00
- WR# 25594-00
- WR# 21418-00
- 408 authorized acres
- 272 authorized AF
- Maintained irrigation equipment
- SE4 & NE4 2-year alfalfa
- SW4 in wheat
- Half-section two 8 tower T&L center pivots
- NE4 7 tower Zimmatic center pivot
- 2025 taxes: \$6,501.98
- SE4 new well and electric motor
- 3 new pumps



THREE CONTIGUOUS QUARTERS



ALL IRRIGATION EQUIPMENT INCLUDED



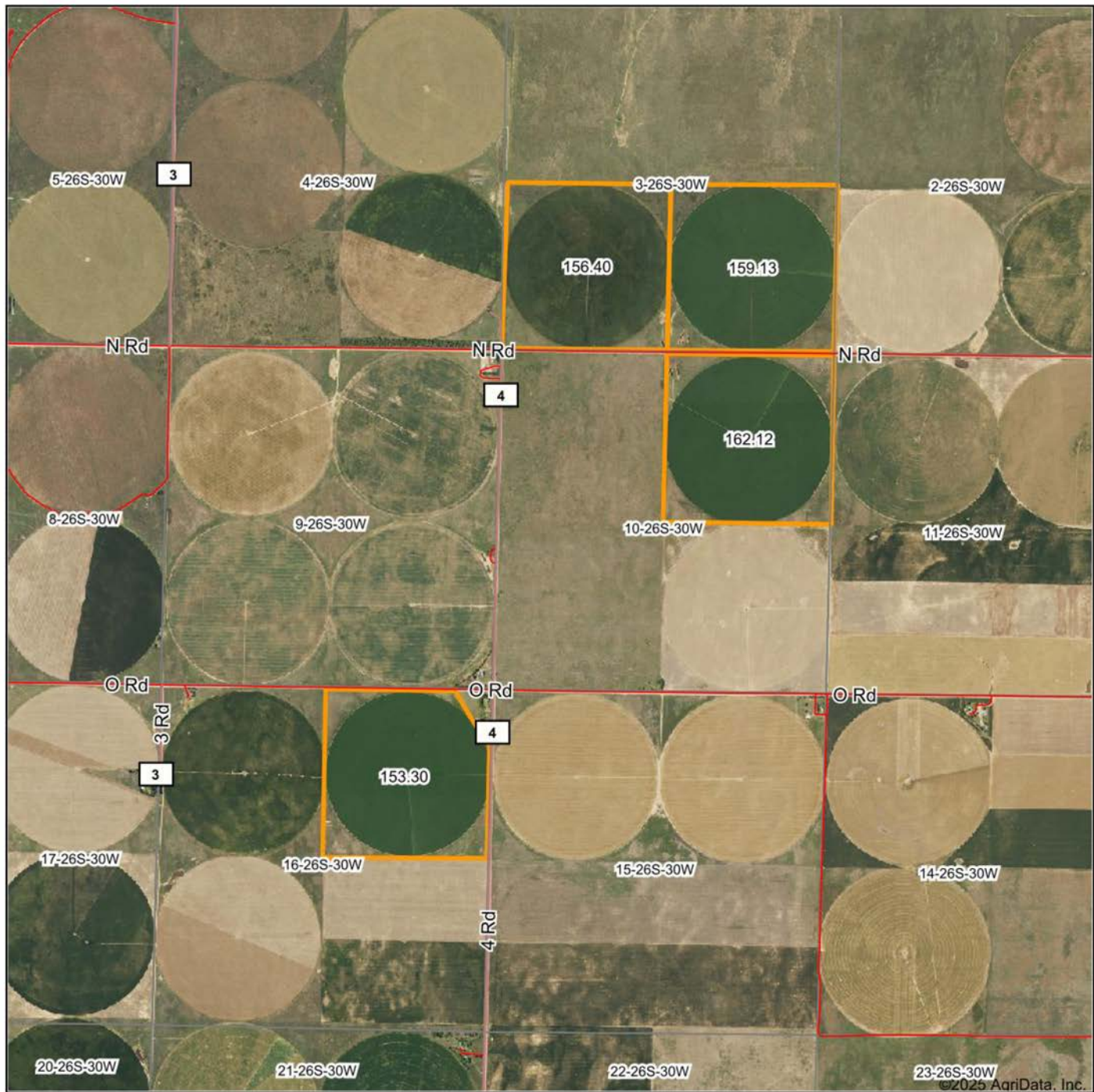
3 CIRCLE PIVOTS



ADDITIONAL PHOTOS



AERIAL MAP



Maps Provided By:



© AgriData, Inc. 2025

www.AgriDataInc.com

Boundary Center: 37° 48' 8.68, -100° 35' 32.58

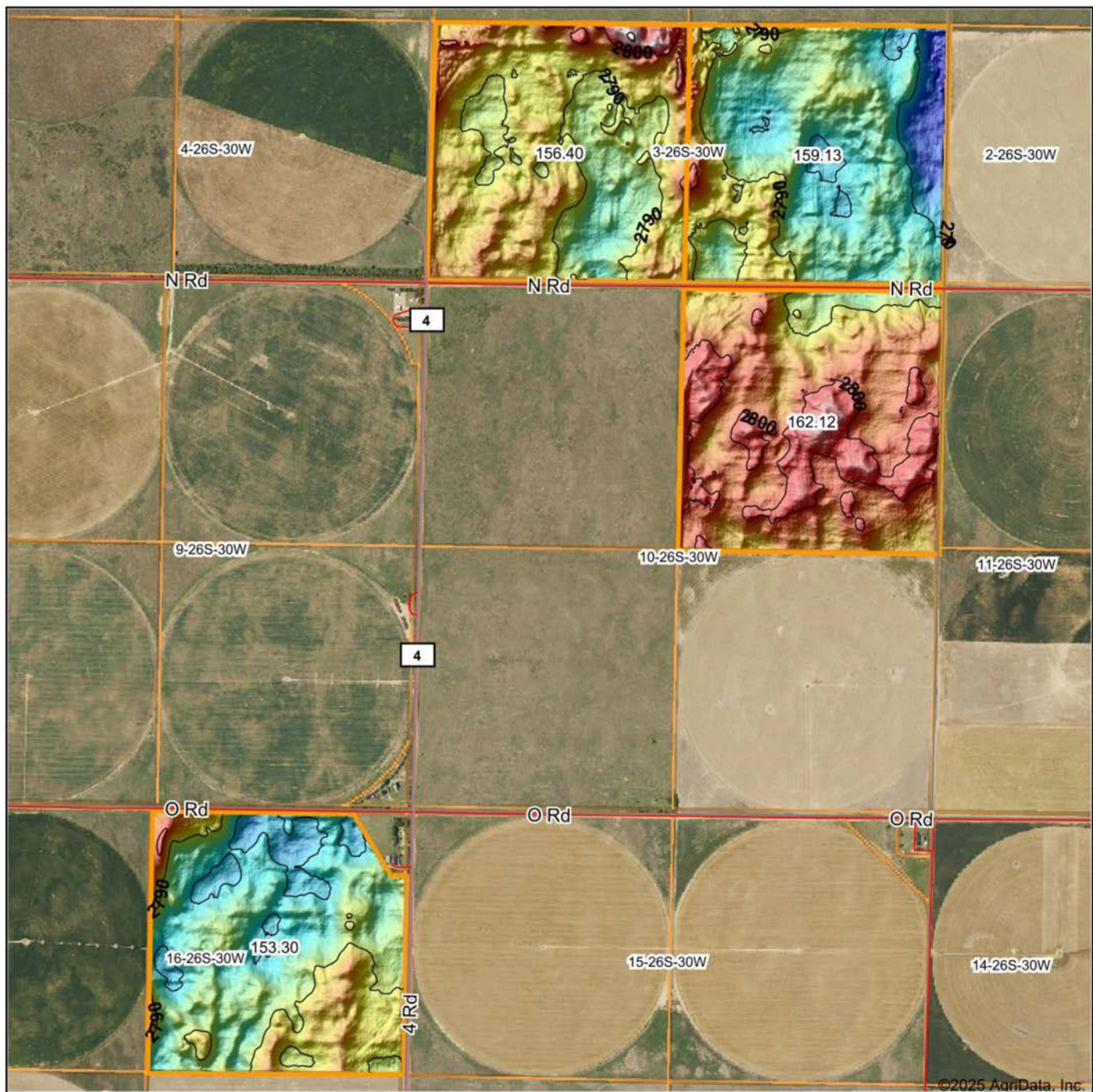
10-26S-30W
Gray County
Kansas

0ft 2453ft 4906ft



12/12/2025

HILLSHADE MAP



Low Elevation High



Maps Provided By:



© AgriData, Inc. 2025

surety®
CUSTOMIZED ONLINE MAPPING

© AgriData, Inc. 2025 www.AgriDataInc.com

Source: USGS 3 meter dem

Interval(ft): 10

Min: 2,771.0

Max: 2,811.4

Range: 40.4

Average: 2,790.3

Standard Deviation: 6.82 ft



12/12/2025

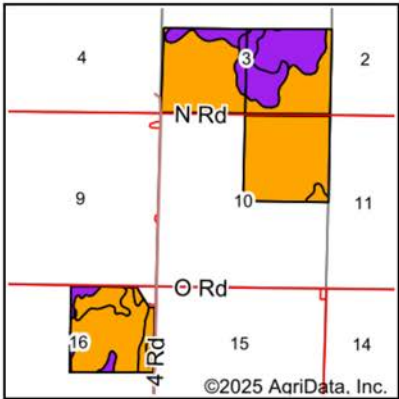
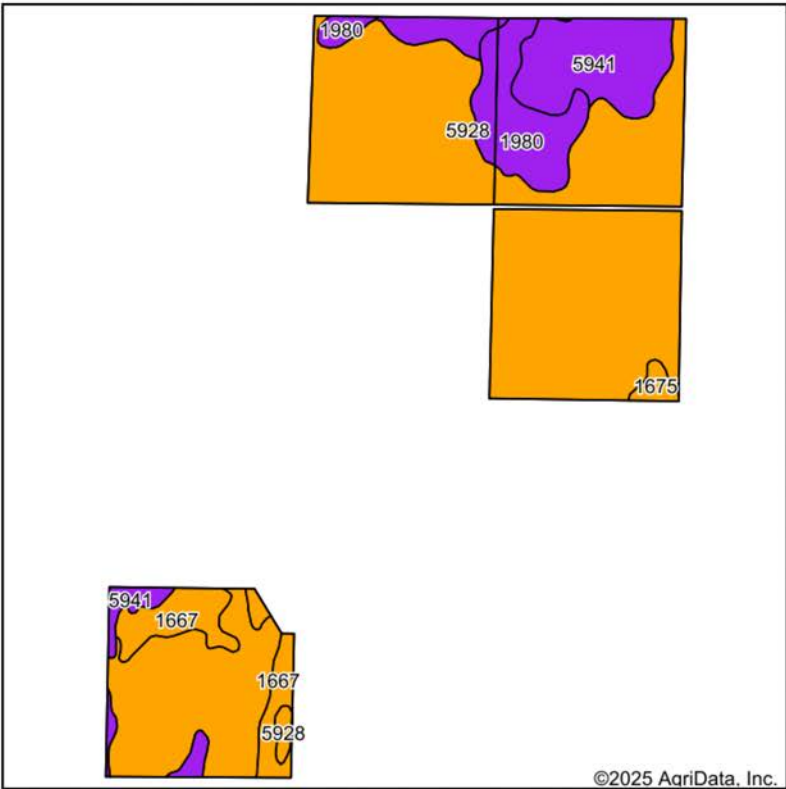
10-26S-30W

Gray County

Kansas

Boundary Center: 37° 48' 8.68, -100° 35' 32.58

SOILS MAP



State: **Kansas**
County: **Gray**
Location: **10-26S-30W**
Township: **Ingalls**
Acres: **630.95**
Date: **12/12/2025**



Maps Provided By:



Area Symbol: KS069, Soil Area Version: 22

Code	Soil Description	Acres	Percent of field	Non-Irr Class Legend	Restrictive Layer	Non-Irr Class *c	Range Production (lbs/acre/yr)	*n NCCPI Overall	*n NCCPI Corn	*n NCCPI Small Grains	*n NCCPI Soybeans	*n NCCPI Cotton
5928	Pratt loamy fine sand, 1 to 5 percent slopes	448.97	71.1%		> 6.5ft.	IIle	2082	29	19	27	25	
5941	Pratt-Tivoli loamy fine sands, 5 to 15 percent slopes	84.98	13.5%		> 6.5ft.	VIle	2100	23	16	22	21	
1980	Valent fine sand, 0 to 5 percent slopes	53.82	8.5%		> 6.5ft.	VIle	1980	21	11	21	14	
1667	Manter fine sandy loam, 0 to 1 percent slopes	37.78	6.0%		> 6.5ft.	IIle	1802	36	21	35	36	
1675	Manter fine sandy loam, 3 to 5 percent slopes, eroded	5.40	0.9%		> 6.5ft.	IIle	1822	39	27	37	39	31
Weighted Average						3.66	2056.7	*n 28	*n 18.1	*n 26.4	*n 24.3	*n 0.3

*n: The aggregation method is "Weighted Average using all components"

*c: Using Capabilities Class Dominant Condition Aggregation Method

WATER RIGHTS

28809-00

Total Acres Authorized: 408
Authorized Date: 02-07-1977
Place of Use: 3-26-30 SW SE
Point of Diversion Qualifiers all three quarters
Authorized (AF): 272
Net Quantity (AF): 272
Authorized Rate (GPM): 995
Net Rate (GPM): 995
2024 Report Use
 Total Water Used: 969
 Acres Irrigated: 125

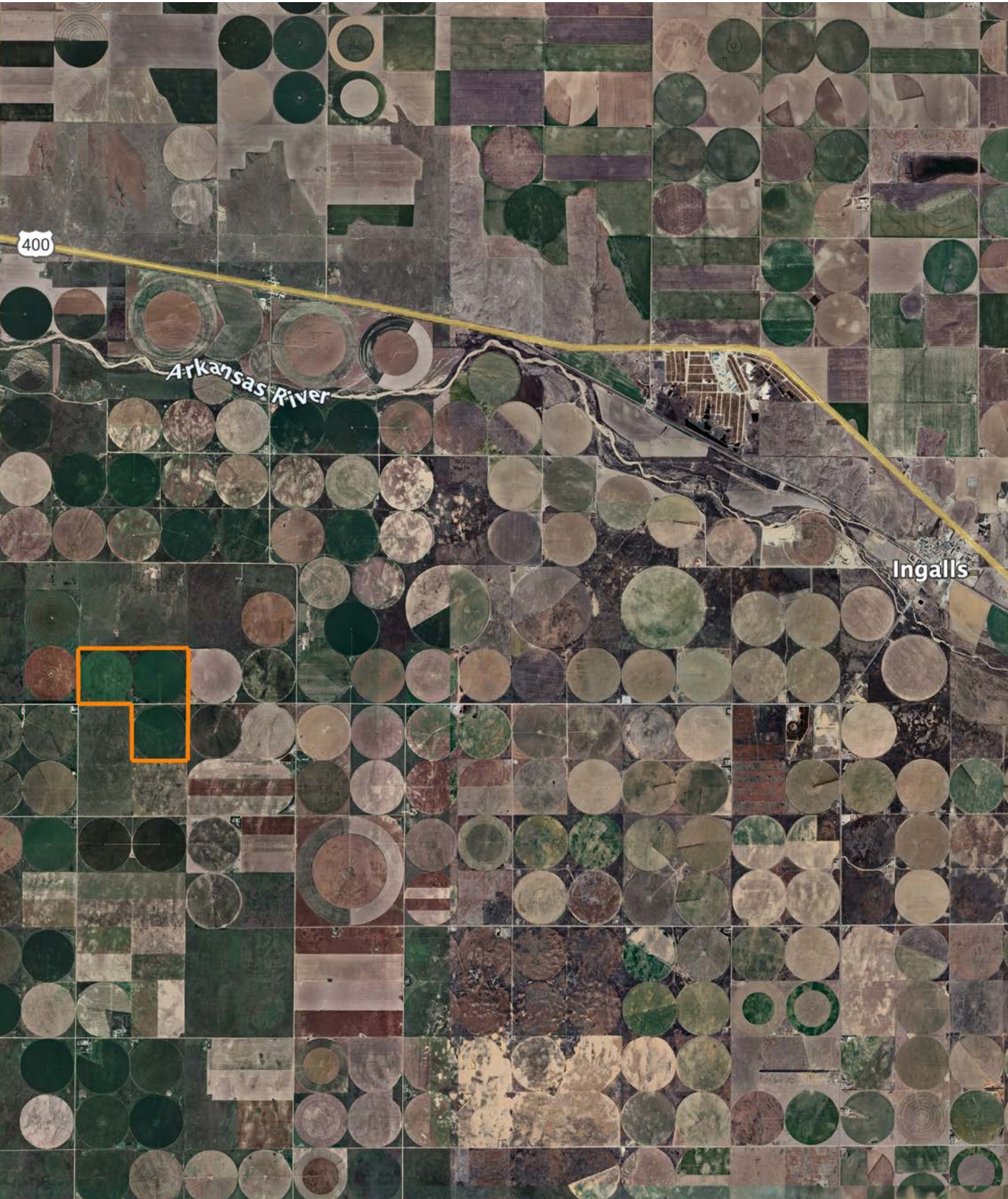
25594-00

Total Acres Authorized: 408
Authorized Date: 01-21-1976
Place of Use: 3-26-30 SW SE
Point of Diversion Qualifiers NC SW
Authorized (AF): 272
Net Quantity (AF): 272
Authorized Rate (GPM): 900
Net Rate (GPM): 900
2024 Reported Use
 Total Water Used: 109
 Acres Irrigated: 125
 Metered Quantity: 109

21418-00

Total Acres Authorized: 408
Authorized Date: 10-09-1973
Place of Use: 3-26-30 NW SE
Point of Diversion Qualifiers SE, NW, NE
Authorized (AF): 272
Net Quantity (AF): 272
Authorized Rate (GPM): 795
Net Rate (GPM): 795
2024 Reported Use
 Total Water Used: 231
 Acres Irrigated: 125
 Metered Quantity: 231

OVERVIEW MAP



AGENT CONTACT

Kayanna Hammeke was born and raised on a fifth-generation farm near Ellinwood, Kansas, where her deep connection to the land began early. Inspired by her grandfather's passion for farming and his love for the local land market, she grew up attending land auctions with him and her father, shaping her path to wanting to help other landowners.

Licensed since the age of 21, Kayanna has dedicated her career to land sales. She brings a well-rounded background in agricultural, utility, and commercial real estate, along with experience in oil ventures. Her knowledge of mineral rights, easements, and land investments adds valuable insight for clients. Kayanna also has a deep love for the outdoors and is an avid hunter, a hobby that gives her a real life understanding for recreational properties and local wildlife habitats.

Backed by generations of Kansas farming heritage, Kayanna offers more than expertise, she offers a personal understanding of the land and the people who work it. Whether buying or selling, she's a trusted local expert known for her honesty, dedication, and deep love for the land.



KAYANNA HAMMEKE

LAND AGENT

620.566.7889

KHammeke@MidwestLandGroup.com



MidwestLandGroup.com

This property is being offered by Midwest Land Group, LLC. 913.674.8010. All information provided by Midwest Land Group, LLC or their agents was acquired from sources deemed accurate and reliable, however we do not warrant its accuracy or completeness. Midwest Land Group, LLC assumes no liability for error, omission or investment results. Midwest Land Group, LLC. Licensed in Alabama, Arkansas, Illinois, Indiana, Iowa, Kansas, Kentucky, Louisiana, Minnesota, Mississippi, Missouri, Montana, Nebraska, Ohio, Oklahoma, South Dakota, Tennessee, Texas, Wisconsin, and Wyoming.