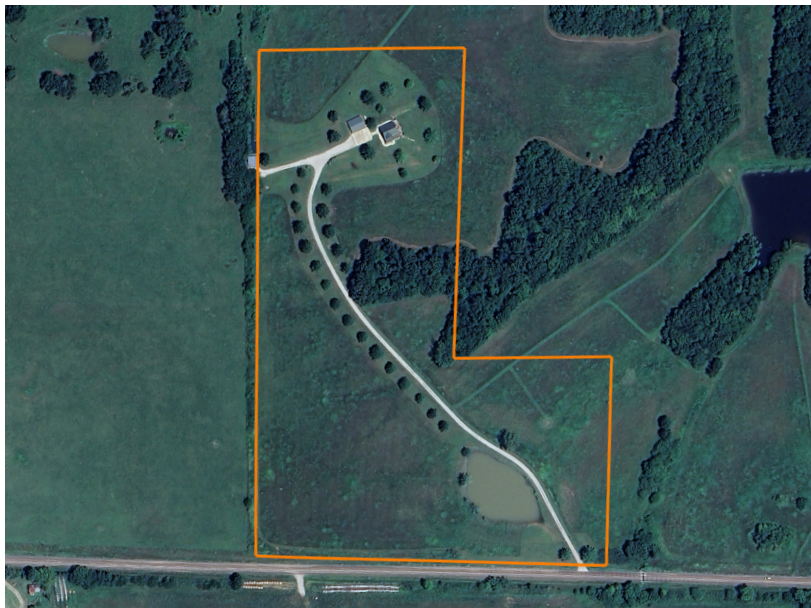


LAND FOR SALE

# MOUNTAIN STYLE CABIN WITH SECLUSION

COUNTY: **GENTRY**  
STATE: **MISSOURI**  
ACRES: **17**



## PROPERTY FEATURES

- Beautiful lodge, feeling log home
- 2-car 27'x31' insulated garage with mini-split HVAC
- 1 bed, 2 full baths with loft
- New HVAC and water heater
- Wood-burning custom stone fireplace
- Basement wood-burning stove
- Long treed driveway
- Extremely private
- Private well with a water purification system
- Fiber Internet
- MFA propane
- 24'x24' shop and lean-to for equipment storage
- VRBO rental potential
- Small amount of CRP
- Pond

For more information, contact:

**PAUL LOWRY**, Land Agent

**816.500.2513** | [PLowry@MidwestLandGroup.com](mailto:PLowry@MidwestLandGroup.com)

**MidwestLandGroup.com**



This property is being offered by Midwest Land Group, LLC, 7111 W. 151st Street, Ste. 27, Overland Park, KS 66223, 913.674.8010.  
Licensed in AL, AR, IA, IL, IN, KS, KY, LA, MN, MO, MS, MT, NE, OH, OK, SD, TN, TX, WI, and WY.