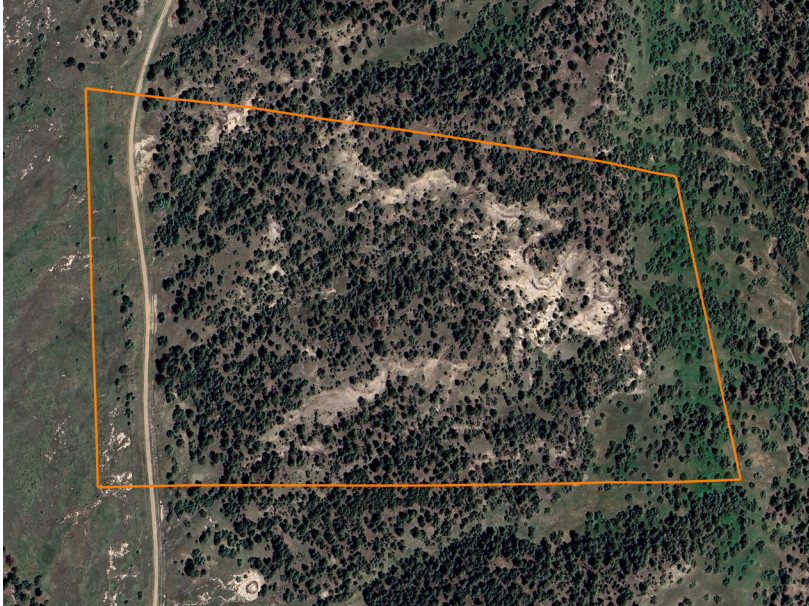


LAND FOR SALE

HIGH BENCH ACRES OVERLOOKING KEYHOLE RESERVOIR

COUNTY: **CROOK**
STATE: **WYOMING**
ACRES: **36**



PROPERTY FEATURES

- 4 miles north of Keyhole Reservoir
- Electric service
- Deer, bobcat, lion, and turkey
- Secluded/private
- Pine trees
- Open meadows
- Multiple build-sites
- Overlooks Keyhole to the south
- Rock outcroppings
- Dirt road access along the entire west boundary



For more information, contact:

RIDGE BRIGGS, Land Agent

307.851.6937 | RBriggs@MidwestLandGroup.com

MidwestLandGroup.com

This property is being offered by Midwest Land Group, LLC, 7111 W. 151st Street, Ste. 27, Overland Park, KS 66223, 913.674.8010. Licensed in AL, AR, IA, IL, IN, KS, KY, LA, MN, MO, MS, MT, NE, OH, OK, SD, TN, TX, WI, and WY.

