

MIDWEST LAND GROUP PRESENTS

.5 ACRES IN

# COFFEY COUNTY KANSAS



716 SHEA STREET, BURLINGTON, KS 66839

MIDWEST LAND GROUP IS HONORED TO PRESENT

# MOVE-IN READY SPLIT-LEVEL HOME OFFERING 4 BEDROOMS, 2 BATHROOMS & DETACHED 2-CAR GARAGE

This well-maintained split-level home features 4 bedrooms and 2 full bathrooms with a functional layout that offers separation between upper and lower living areas. Large windows provide consistent natural light throughout the home, creating a bright and balanced interior on both levels.

The upper level includes a covered back porch, while the lower level offers a walkout basement, adding to the home's overall usability and value. The walkout design

provides direct exterior access from the lower level and enhances the flow between indoor and outdoor spaces without compromising privacy.

A detached 2-car garage provides convenient parking and additional storage. With a practical floor plan, desirable structural features, and a clean exterior presentation, this property represents a solid residential opportunity in a quiet and accessible location.



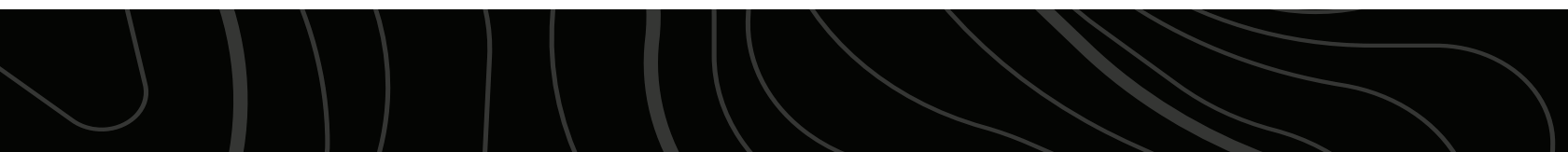
## PROPERTY FEATURES

COUNTY: **COFFEY** | STATE: **KANSAS** | ACRES: **.5**

- Split-level home with a functional upper and lower layout
- Four bedrooms and two full bathrooms
- Walkout basement with exterior access
- Covered back porch off the upper level
- Detached two-car garage
- Abundant natural light throughout the home
- Practical floor plan offering separation of living areas
- Clean and well-maintained exterior
- Manageable lot size with room for outdoor use
- Located in a quiet and accessible residential setting

# SPLIT-LEVEL HOME

---



# DETACHED TWO-CAR GARAGE

---



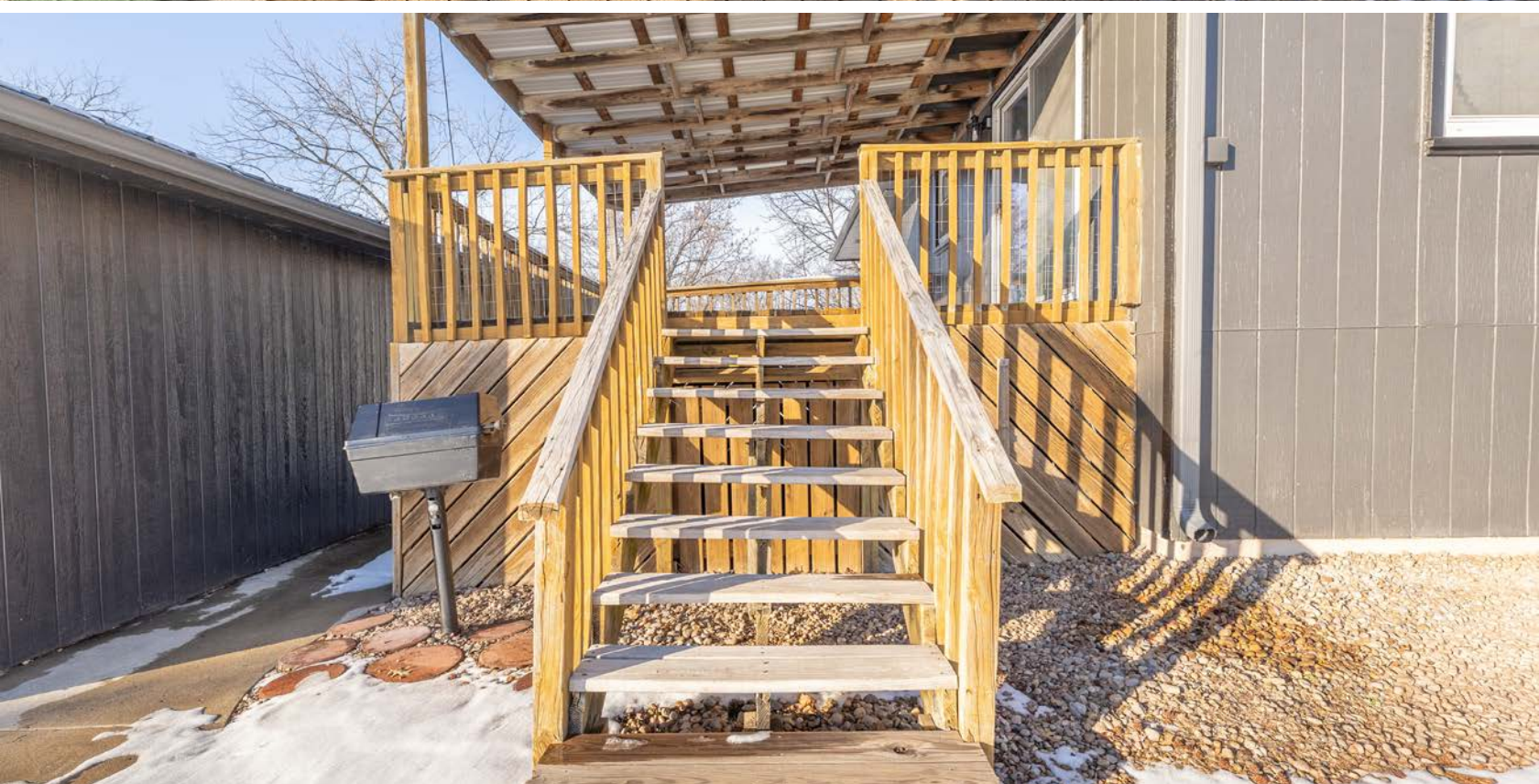
## ABUNDANT NATURAL LIGHT

---



# COVERED BACK PORCH

---

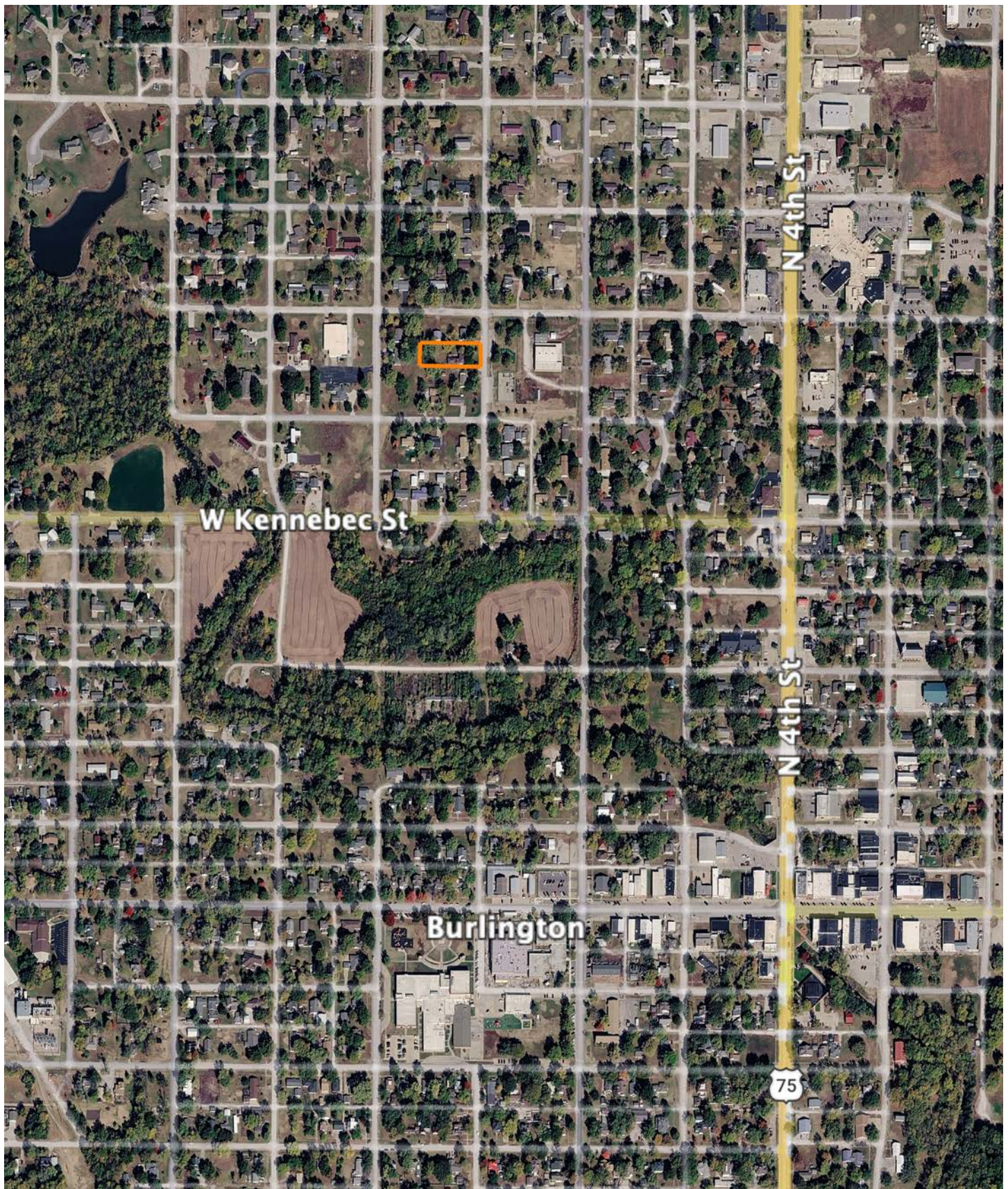


# AERIAL MAP

---



# OVERVIEW MAP



## AGENT CONTACT

---

Kendall Jeffers doesn't just sell land, he lives it every day. Born and raised in Coffey County, Kansas, Kendall grew up hunting and fishing alongside his father and grandfather, learning early what it means to care for the land and pass it down better than you found it. That passion became a profession when he founded True Kansas Outdoors, a hunting guide service built around helping others experience that same connection.

Kendall brings a rare combination of land expertise to every client he serves. From planting food plots and hanging stands to assisting local farmers with row crops and cattle work, he understands the details that make a property valuable for hunting, recreation, or production. With several years of land sales experience already under his belt, he pairs that insight with honest, hands-on guidance that buyers and sellers trust.

He's also active in the outdoor community through groups like OK Kids and Giving Back Outdoors, where he helps introduce veterans and young people to the outdoors. Based in Burlington, Kendall serves Central and Southeast Kansas with the same work ethic, respect, and deep-rooted knowledge he's carried since day one in the field.



### **KENDALL JEFFERS,**

LAND AGENT

**620.203.1109**

[KJeffers@MidwestLandGroup.com](mailto:KJeffers@MidwestLandGroup.com)



---

## **MidwestLandGroup.com**

This property is being offered by Midwest Land Group, LLC. 913.674.8010. All information provided by Midwest Land Group, LLC or their agents was acquired from sources deemed accurate and reliable, however we do not warrant its accuracy or completeness. Midwest Land Group, LLC assumes no liability for error, omission or investment results. Midwest Land Group, LLC. Licensed in Alabama, Arkansas, Illinois, Indiana, Iowa, Kansas, Kentucky, Louisiana, Minnesota, Mississippi, Missouri, Montana, Nebraska, Ohio, Oklahoma, South Dakota, Tennessee, Texas, Wisconsin, and Wyoming.