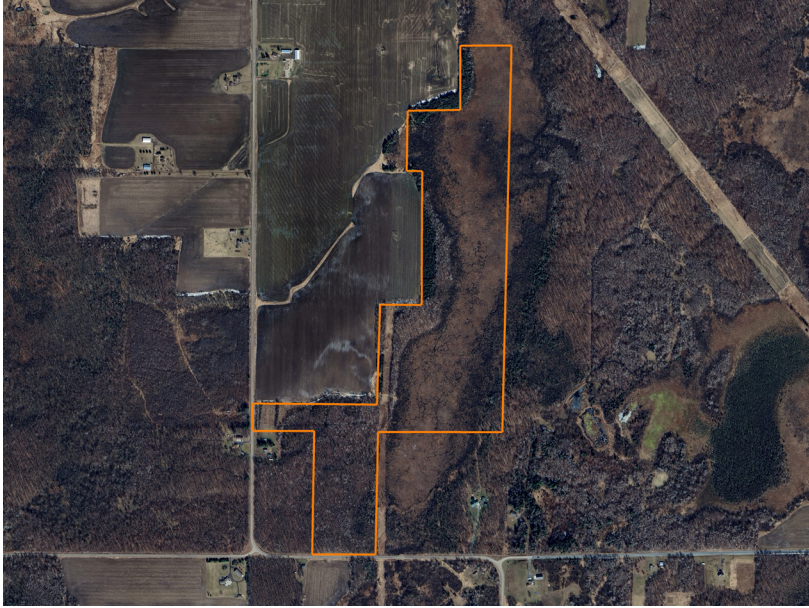


LAND FOR SALE

121 +/- AFFORDABLE ACRES OF BIG BUCK GROUND IN CHIPPEWA COUNTY

COUNTY: **CHIPPEWA**
STATE: **WISCONSIN**
ACRES: **121**



PROPERTY FEATURES

- 121 +/- acres of diverse, mature, buck habitat
- Perfect for a DIY hunting land improvement hobbyist
- Access on a paved county road
- Extensive history of mature bucks harvested on the property
- Electricity on site
- Very affordable tract in Chippewa County
- Electricity on site
- 24' x 16' pool shed
- Buildable area in the southernmost portion
- Low taxes
- No government programs

For more information, contact:

MATT SPETS, Land Agent

715.393.8387 | MSpets@MidwestLandGroup.com

MidwestLandGroup.com

This property is being offered by Midwest Land Group, LLC, 7111 W. 151st Street, Ste. 27, Overland Park, KS 66223, 913.674.8010. Licensed in AL, AR, IA, IL, IN, KS, KY, LA, MN, MO, MS, MT, NE, OH, OK, SD, TN, TX, WI, and WY.

