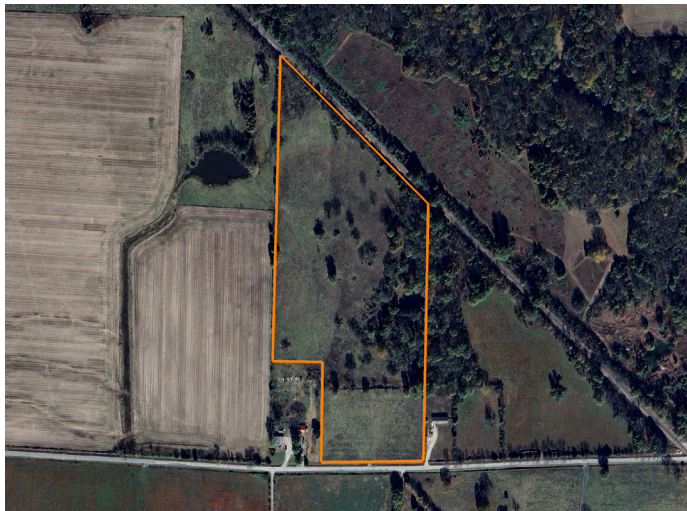


# LAND FOR SALE

## CHEROKEE 25.5: FARM, HUNT, AND BUILD YOUR DREAM HOME



### PROPERTY FEATURES

- 25.5+/- Acres
- Will need a survey
- Great mix of pasture and timber
- Blacktop road frontage
- Electric at the road
- Large pond
- Abundance of deer and turkey
- Big buck history
- Fully fenced for livestock
- Multiple build sites



COUNTY: **CHEROKEE**

STATE: **KANSAS**

ACRES: **25.5**



For more information, contact:

**KELLEN BOUNOUS**, Land Agent

**417.313.3123** | [KBounous@MidwestLandGroup.com](mailto:KBounous@MidwestLandGroup.com)

**MidwestLandGroup.com**

BUYERS, SELLERS, AND LAND – CONNECTED

This property is being offered by Midwest Land Group, LLC, 7111 W. 151st Street, Ste. 27, Overland Park, KS 66223, 913.674.8010.  
Licensed in AL, AR, IA, IL, IN, KS, KY, LA, MN, MO, MS, MT, NE, OH, OK, SD, TN, TX, WI, and WY.

