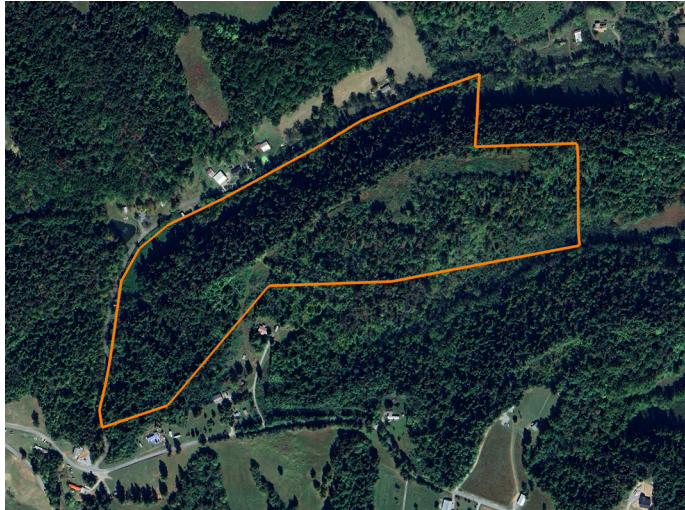


# LAND FOR SALE

## BEAUTIFUL HILLTOP FARM IN SOUTHERN BEDFORD COUNTY



### PROPERTY FEATURES

- High-quality spring
- Secluded
- Hardwood ridge
- 3,000 +/- feet County Road frontage
- Partially cleared
- Utilities available
- Barn
- Fencing
- Abundant wildlife



For more information, contact:

**JUSTIN CARROLL**, Land Agent

**931.488.4393** | [JCarroll@MidwestLandGroup.com](mailto:JCarroll@MidwestLandGroup.com)

**MidwestLandGroup.com** BUYERS, SELLERS, AND LAND – CONNECTED

This property is being offered by Midwest Land Group, LLC, 7111 W. 151st Street, Ste. 27, Overland Park, KS 66223, 913.674.8010.  
Licensed in AL, AR, IA, IL, IN, KS, KY, LA, MN, MO, MS, MT, NE, OH, OK, SD, TN, TX, WI, and WY.



COUNTY: **BEDFORD**

STATE: **TENNESSEE**

ACRES: **50**

