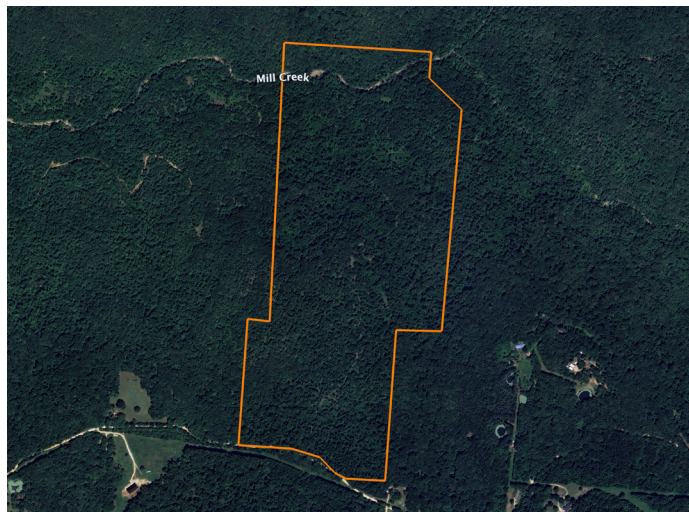


LAND FOR SALE

SECLUDED OZARK PROPERTY WITH MILL CREEK & MOUNTAIN VIEWS NEAR WEST FORK



PROPERTY FEATURES

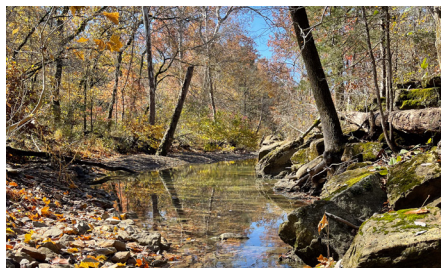
- Mostly timbered with gently rolling Ozark terrain
- UTV trails throughout property
- Mill Creek runs through the north end of the property
- Excellent hunting and outdoor recreation opportunities
- Multiple potential building sites with stunning Ozark Mountain views
- Private and secluded setting with abundant wildlife



COUNTY: **WASHINGTON**

STATE: **ARKANSAS**

ACRES: **120**



For more information, contact:

JEREMY RIGGS, Land Agent

479.319.5673 | JRiggs@MidwestLandGroup.com

MidwestLandGroup.com BUYERS, SELLERS, AND LAND – CONNECTED

Midwest Land Group, LLC, 913.674.8010, Licensed in Arkansas, Illinois, Iowa, Kansas, Minnesota, Missouri, Nebraska, Oklahoma, South Dakota, Tennessee, Texas, Wisconsin, and Wyoming.

