

MIDWEST LAND GROUP PRESENTS

80 ACRES IN

WADENA COUNTY MINNESOTA



MidwestLandGroup.com

MIDWEST LAND GROUP IS HONORED TO PRESENT

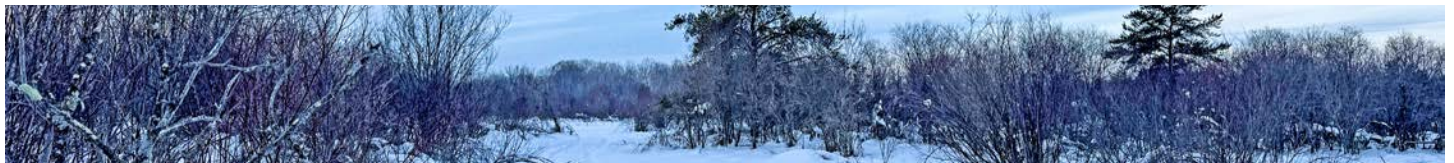
HABITAT-RICH HUNTING LAND WITH POTENTIAL BUILD SITE

The landlocked nature, combined with abundant and impressively dense security cover, will not only attract the attention of serious hunters, but the local deer population, too. The property offers established and manicured trails throughout, various habitat types, including oak hilltops to firm low ground. There are a number of platforms ready for your preferred brand of shooting house, several treestands will remain, and a handful of existing food plots are ready for seed. The seasoned deer farmer will find ample locations just begging for additional plots to pull and hold deer on their 80 +/- acre hunting farm.

There is a potential build site that would make a beautiful location for a new hunting cabin or pole building—or both. Perhaps to the innovative builder, a permanent

home is the final objective—either way, it's a gorgeous location ready to be the foundation of your dreams. Or, you can always tow in a camper or four, fire rings, camp chairs, and temporary shelters to set up a mobile camp for deer season.

This 80 +/- acre hunting property is accessible via a 1,240-foot legally established easement off of County Road 30, just 7.5 miles north of Staples and 24 miles east of Wadena, Minnesota. Easily accessible amenities will keep deer-camp production, food-plot implementation, and property management rolling at all times, not to mention there are several fantastic restaurants and meat raffles within minutes of the property's driveway. This turn-key Central Minnesota hunting farm is ready for new lifetime memories, don't miss your chance!



PROPERTY FEATURES

COUNTY: **WADENA** | STATE: **MINNESOTA** | ACRES: **80**

- Wonderful potential build site
- Excellent whitetail deer, wild turkey, grouse, and black bear hunting opportunities
- Existing and productive stand locations
- Established food plots
- Manicured trails across the entire property and to each stand location
- Abundant mast-producing oak trees
- Utilities available along County Highway 30
- Proven big-buck producer year in and year out
- Fully private and secluded
- Remarkable beauty
- Hunting paradise
- 7.5 miles from Staples, 24 miles from Wadena

MANICURED TRAILS



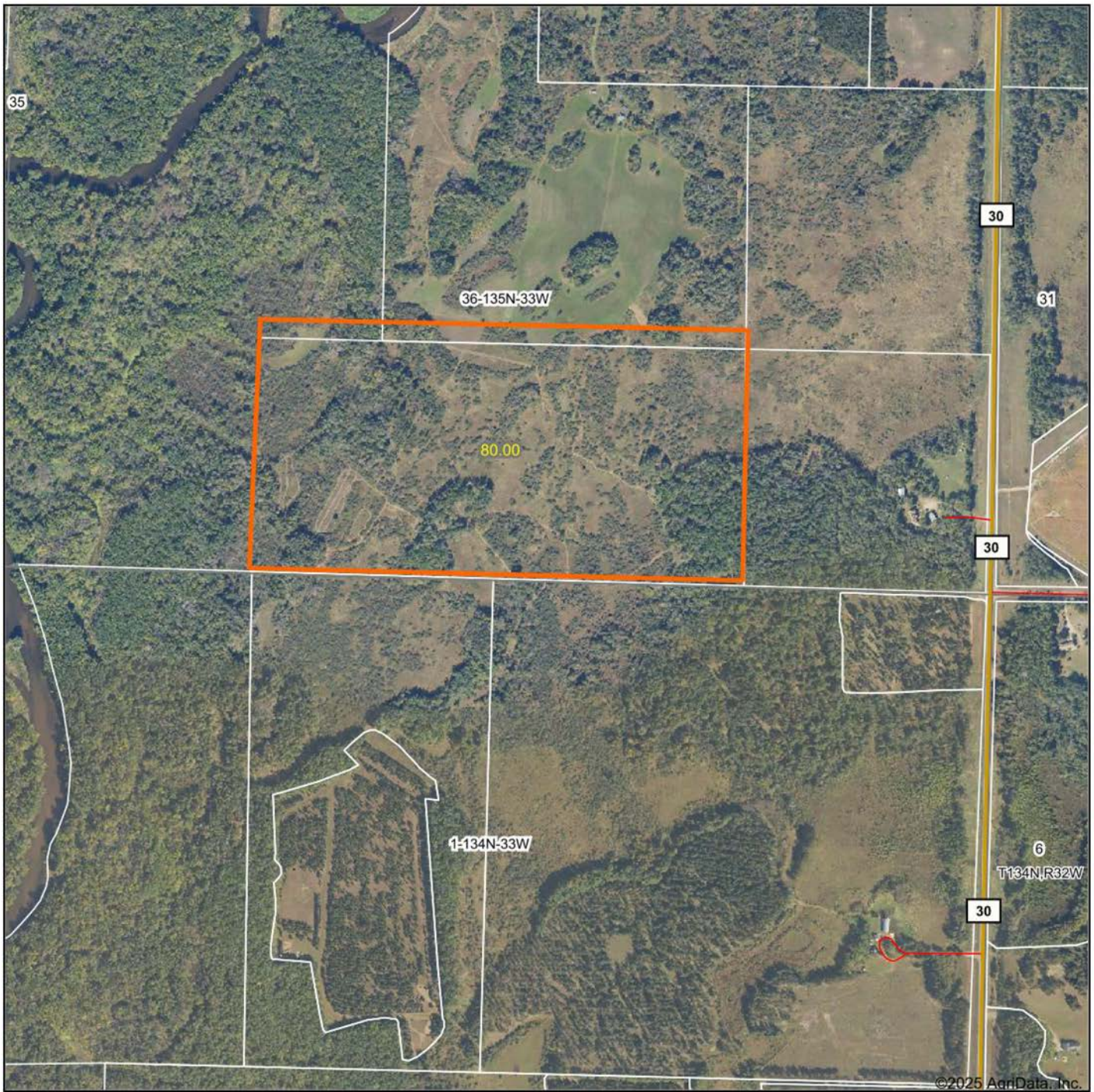
HUNTING PARADISE



WONDERFUL POTENTIAL BUILD SITE



AERIAL MAP



Maps Provided By:



© AgriData, Inc. 2025 www.AgriDataInc.com

Boundary Center: 46° 27' 26.26, -94° 47' 21.72

0ft 826ft 1652ft

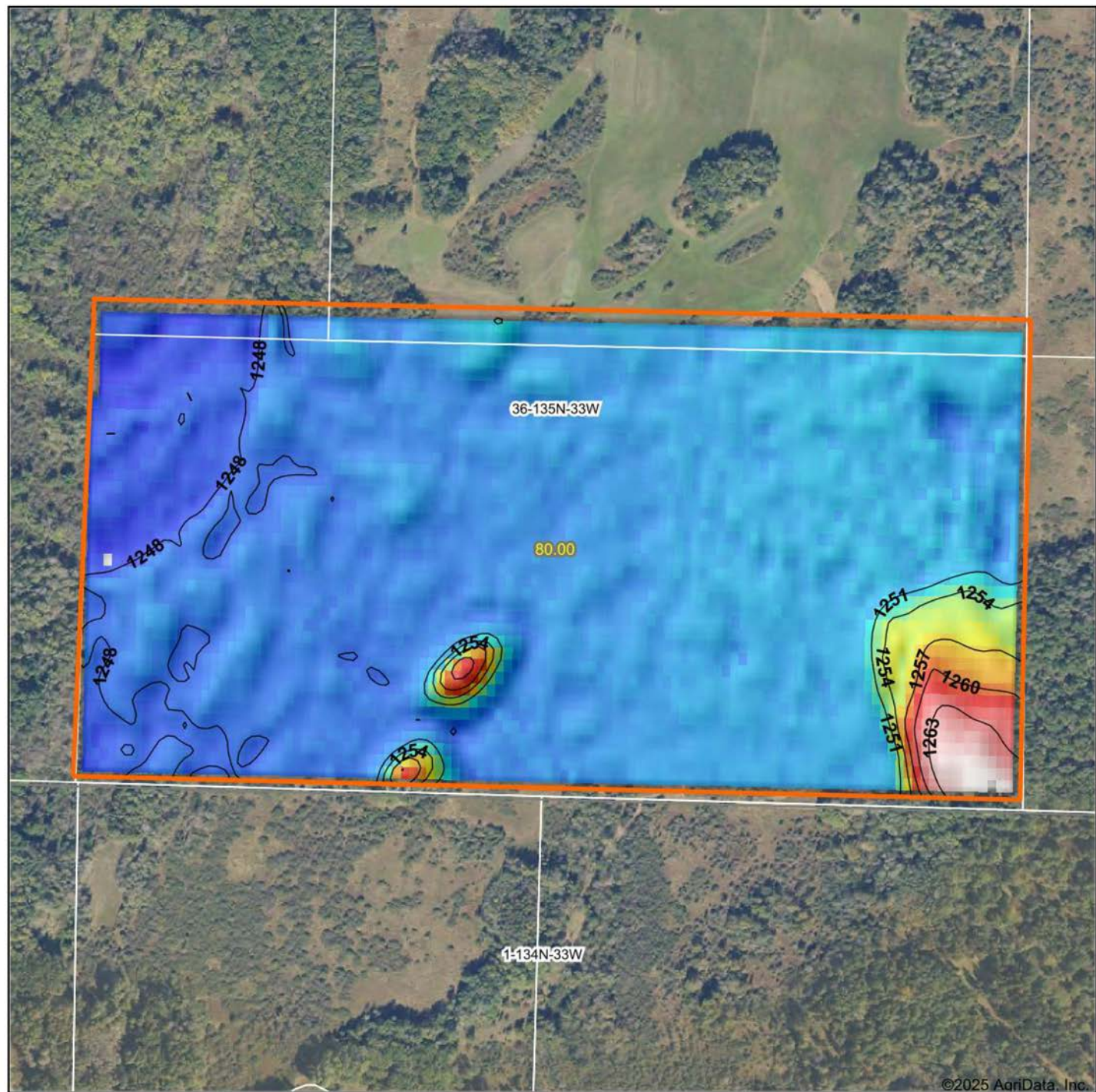
36-135N-33W
Wadena County
Minnesota



12/13/2025

Field borders provided by Farm Service Agency as of 5/21/2008.

HILLSHADE MAP

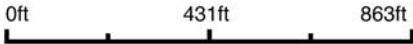


©2025 AgriData, Inc.



Maps Provided By:
surety
CUSTOMIZED ONLINE MAPPING
© AgriData, Inc. 2025 www.AgriDataInc.com

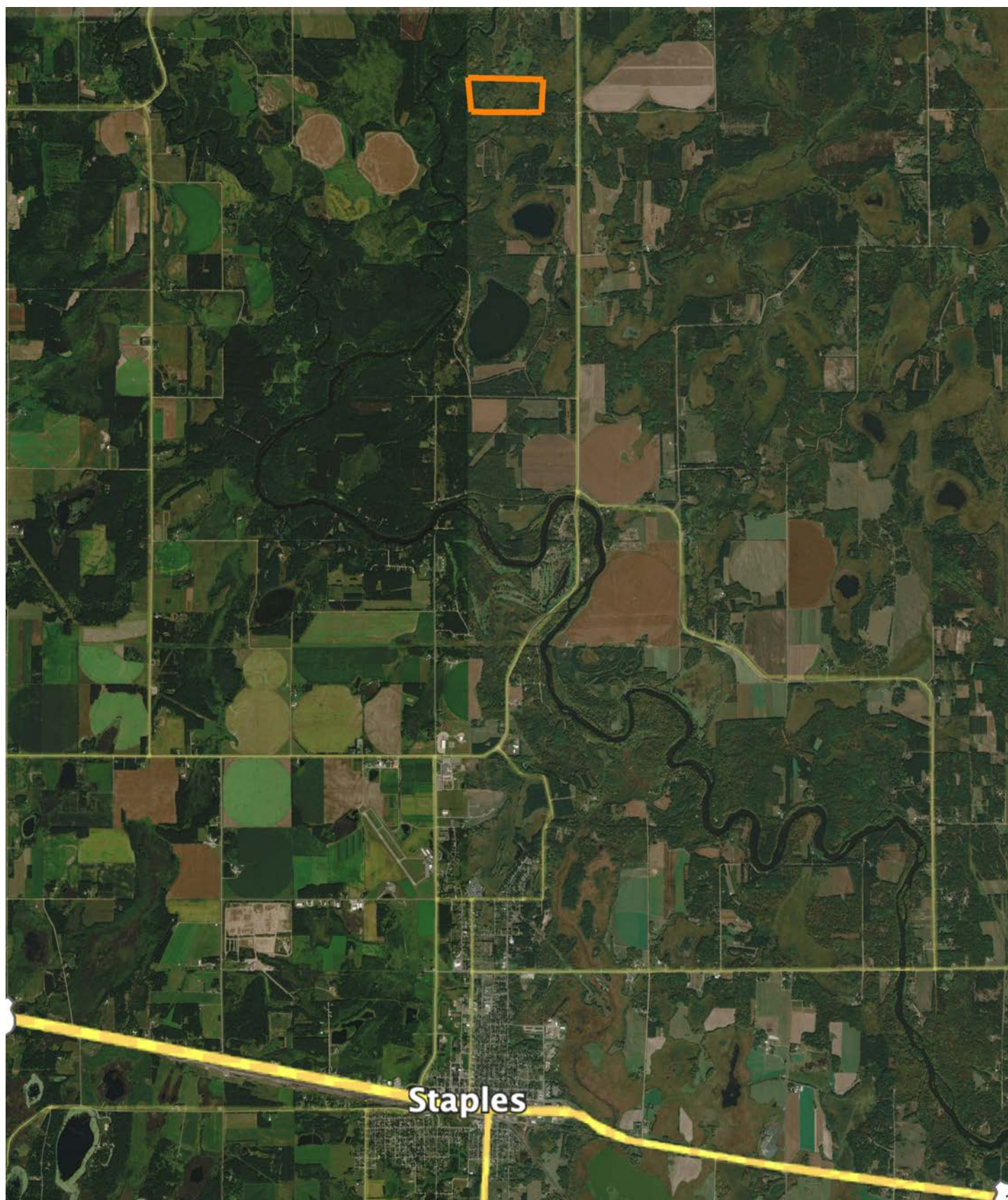
Source: USGS 10 meter dem
Interval(ft): 3
Min: 1,246.6
Max: 1,265.4
Range: 18.8
Average: 1,249.7
Standard Deviation: 2.76 ft



36-135N-33W
Wadena County
Minnesota

Boundary Center: 46° 27' 26.26, -94° 47' 21.72

OVERVIEW MAP



AGENT CONTACT

Thomas Allen has spent over four decades pursuing life in the great outdoors, which created a deep appreciation for the land and the opportunities it provides. Born in Wisconsin and raised in Eastern Iowa, he grew up exploring creeks, catching catfish, and learning every detail of the timber that surrounded him. Those early adventures led to a lifelong passion for bass and muskie fishing, and especially hunting spring turkeys and Midwestern whitetails. He has since chased gobblers across 15 states, but what he values most are the memories made in the field with his family.

Now living in Brainerd, Minnesota, Thomas and his wife, Kathryn, have been married since 2003 and share two children, Tommy and Taylor, who are both lethal spring turkey hunters. God, family and the Midwestern outdoors are top priorities for the Allens.

Before joining Midwest Land Group, Thomas built a 20-year career as an outdoor media and communications specialist, having held editor chairs at *The Iowa Sportsman*, *North American Fisherman*, *Bassmaster/B.A.S.S. Times* magazines—and most recently at *In-Fisherman* based out of Brainerd. His work has also appeared in respected publications including *North American Whitetail*, *Game & Fish*, *North American Hunter*, and many more. That experience has provided a unique ability to connect with fellow landowners, hunters, and outdoor enthusiasts who share the same love for the outdoor lifestyle.

Thomas' passion for the Midwestern hardwoods was naturally coupled with a love for land management, strategic food-plot establishment, treestand wizardry, and sharing the boat or shooting house with family and friends, whether behind the gun, bow or lens. It is this passionate expertise that will make for a confident experience buying and selling land through the team at Midwest Land Group. If you're in the market, give Thomas a call.



THOMAS ALLEN, LAND AGENT
218.656.0061
TAllen@MidwestLandGroup.com



MidwestLandGroup.com

This property is being offered by Midwest Land Group, LLC. 913.674.8010. All information provided by Midwest Land Group, LLC or their agents was acquired from sources deemed accurate and reliable, however we do not warrant its accuracy or completeness. Midwest Land Group, LLC assumes no liability for error, omission or investment results. Midwest Land Group, LLC. Licensed in Alabama, Arkansas, Illinois, Indiana, Iowa, Kansas, Kentucky, Louisiana, Minnesota, Mississippi, Missouri, Montana, Nebraska, Ohio, Oklahoma, South Dakota, Tennessee, Texas, Wisconsin, and Wyoming.