

MIDWEST LAND GROUP PRESENTS

120 ACRES IN

---

# STONE COUNTY ARKANSAS



[MidwestLandGroup.com](http://MidwestLandGroup.com)



MIDWEST LAND GROUP IS HONORED TO PRESENT

# 120 +/- ACRES IN THE BEAUTIFUL OZARK MOUNTAINS

---

Nestled in the heart of Stone County, Arkansas, this remarkable 120 +/- acre property offers a harmonious blend of natural beauty and outdoor adventure. Accessed via a deeded easement, the land is adorned with mature timber, creating a picturesque landscape that invites you to explore its diverse terrain. A wet weather creek meanders through the property, providing a serene water feature that adds to the tranquil atmosphere. The area is also distinguished by stunning rock formations, including impressive outcroppings and rock overhangs, which provide unique opportunities for outdoor exploration and photography.

Located just 30 minutes from the vibrant community of Mountain View, Arkansas, this property is conveniently situated near renowned recreational spots such as the White River and Greers Ferry Lake. Whether you're looking to build your dream home, establish a private retreat, or create an outdoor sanctuary for camping and hiking, this picturesque land offers an idyllic setting for nature lovers and adventure seekers alike. With its abundant wildlife and captivating landscapes, this Stone County gem promises a perfect escape into the beauty of the Ozarks.



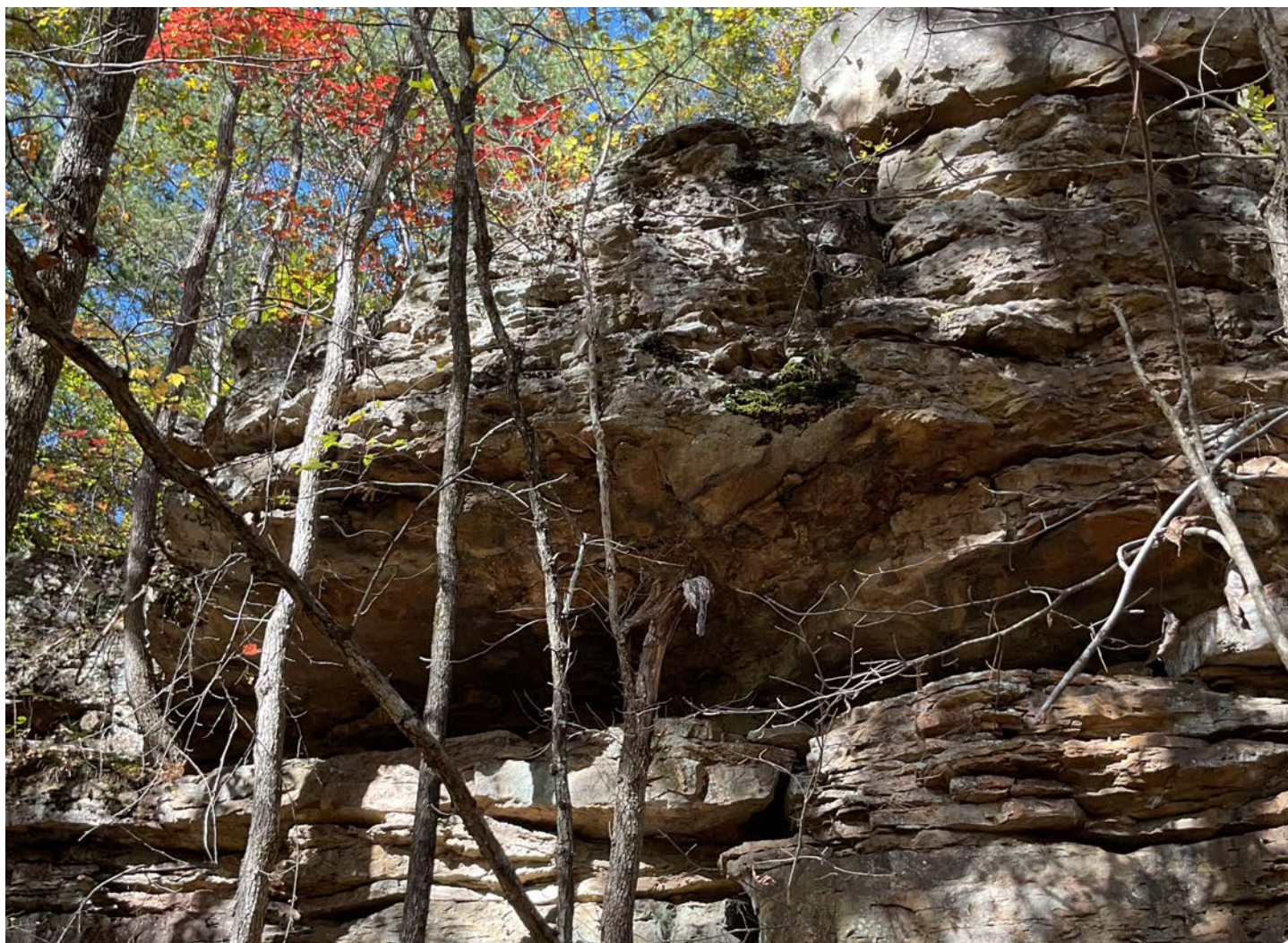


# PROPERTY FEATURES

COUNTY: **STONE** | STATE: **ARKANSAS** | ACRES: **120**

---

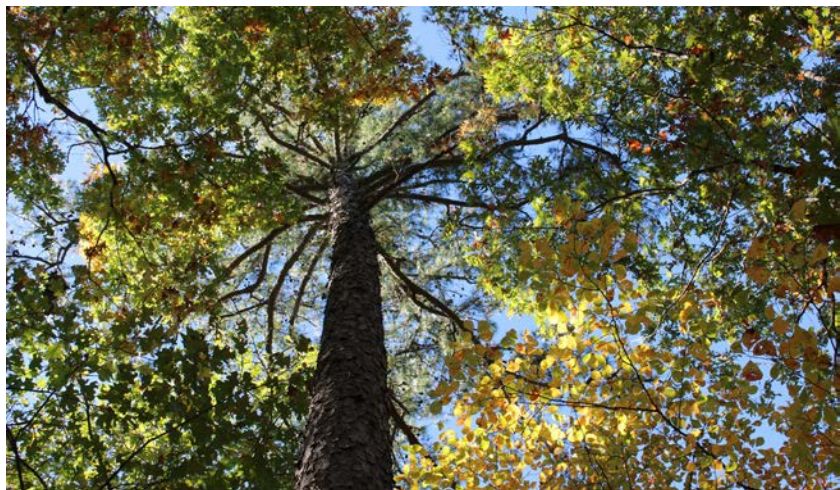
- 120 +/- acres in Stone County, Arkansas
- Accessed via deeded easement from Dump Mountain Road
- Beautiful marketable timber: white oak, red oak, and pine
- Amazing rock formations throughout the property
- Abundant deer sign: rubs, scrapes, and trails
- Convenient driving distance to the scenic Buffalo River, ideal for hiking, camping, and enjoying nature
- Short drive to Ozark National Forest: Surrounded by beautiful landscapes, offering numerous hiking trails, waterfalls, and wildlife viewing opportunities
- 30 minutes from Downtown Mountain View and Ozark Folk Center State Park
- Just 35 minutes from the Guion Access on the White River, perfect for fishing and water sports
- Only 40 minutes away from Greers Ferry Lake and the Little Red River, offering excellent opportunities for boating and kayaking
- 50 minutes to Blanchard Springs Caverns: Stunning underground formations and guided tours available for a unique spelunking experience
- Private setting surrounded by world-class outdoor recreation





# BEAUTIFUL MARKETABLE TIMBER

---





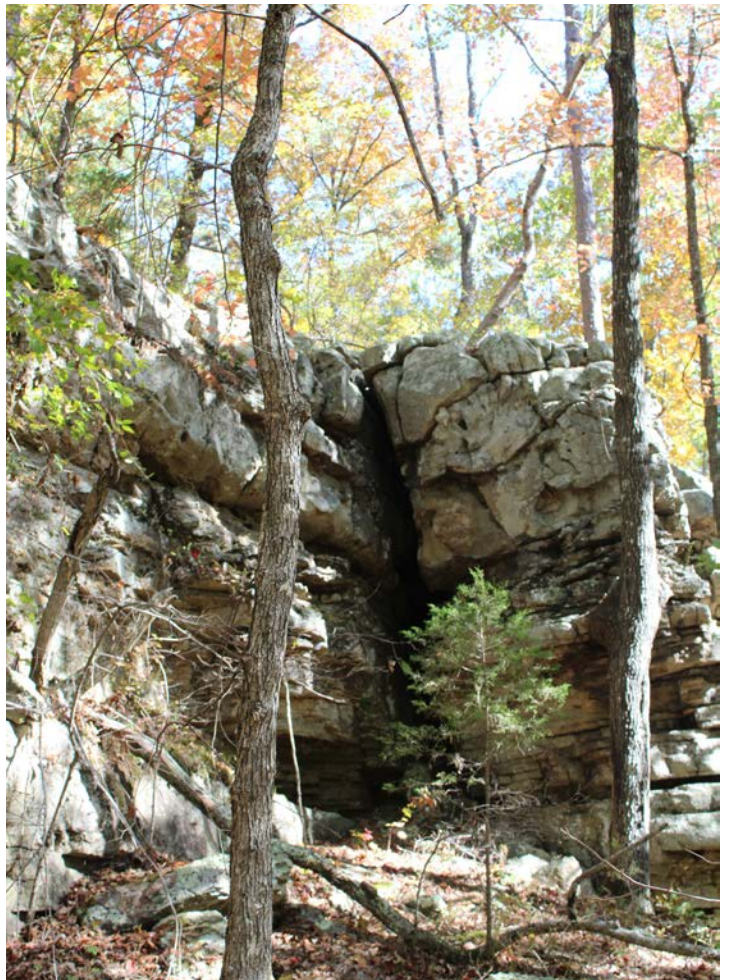
## ABUNDANT DEER SIGN

---



## AMAZING ROCK FORMATIONS

---





# WET-WEATHER CREEK

---





120 +/- ACRES

---





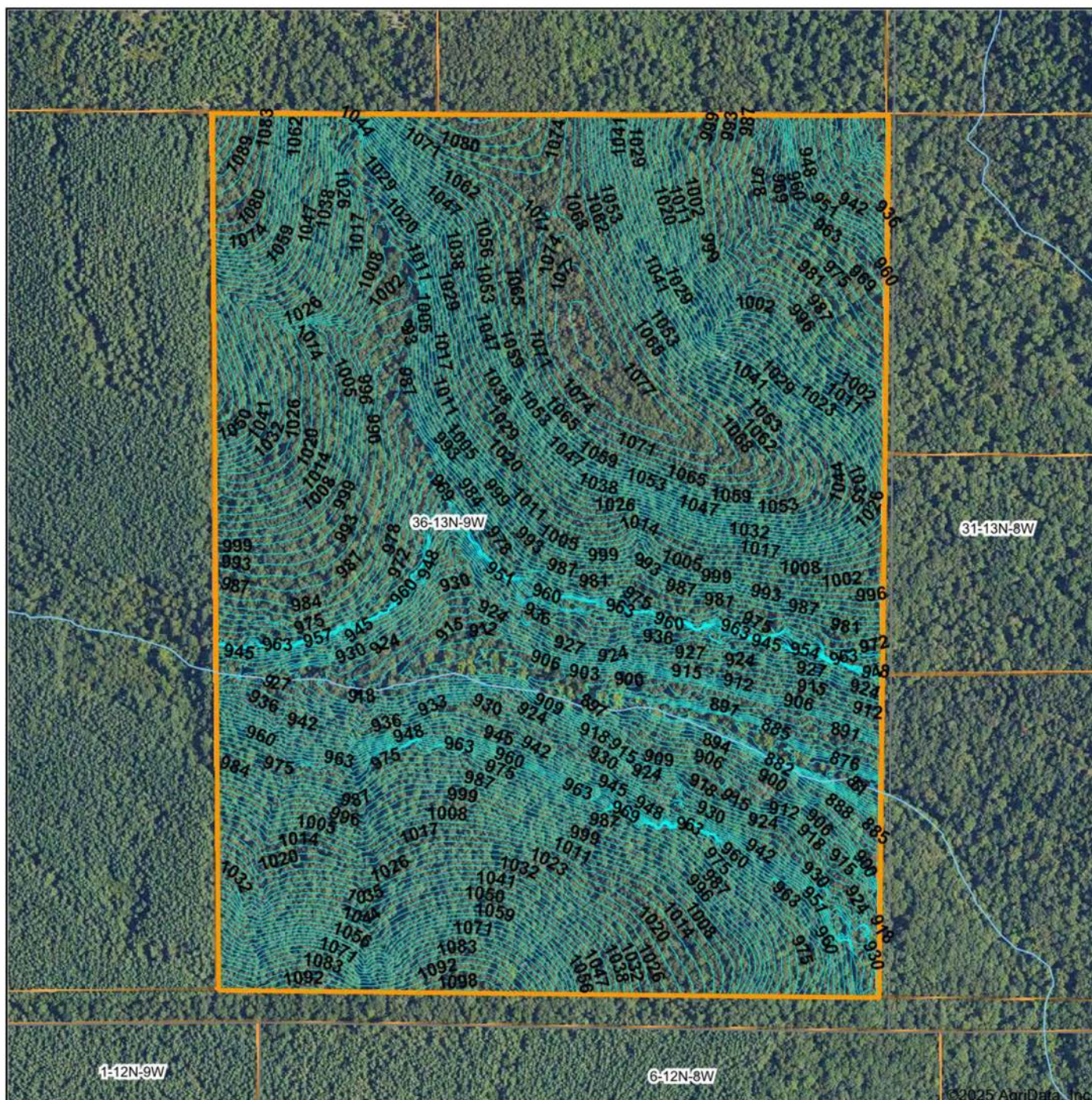
## ADDITIONAL PHOTOS

---





# TOPOGRAPHY MAP



Maps Provided By:



© AgriData, Inc. 2025 [www.AgriDataInc.com](http://www.AgriDataInc.com)

**Source:** USGS 1 meter dem

Interval(ft): 3.0

Min: 856.2

**Max:** 1,101.8

**Range:** 245.6

**Average:** 1,000.3

**Standard Deviation:** 53.74 ft

0ft                      458ft                      916ft



12/3/2025

36-13N-9W

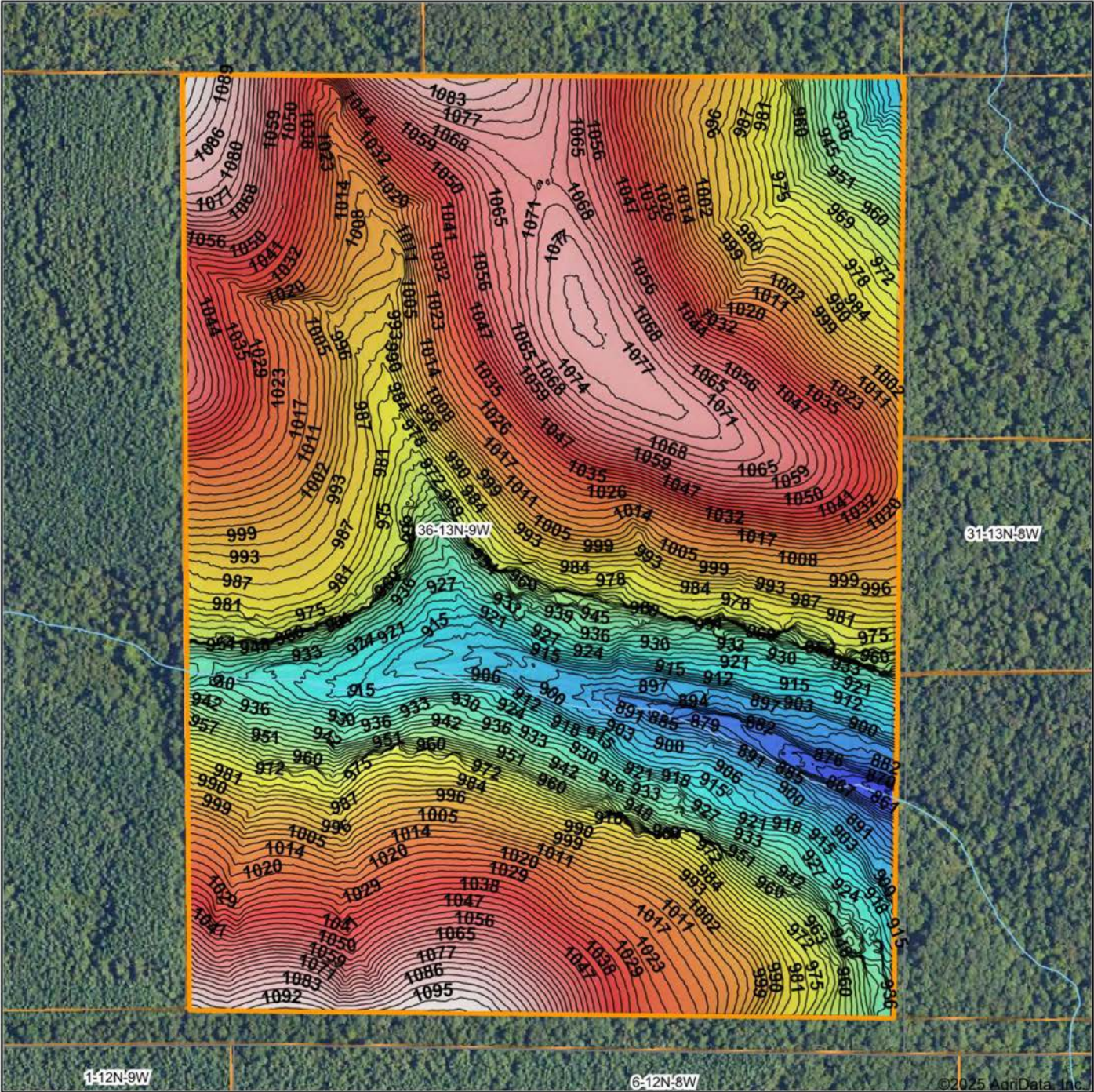
## Stone County

## Arkansas

Boundary Center: 35° 42' 34.39, -91° 53' 38.11



# HILLSHADE MAP



Low Elevation High



Maps Provided By:



© AgriData, Inc. 2025 www.AgriDataInc.com

Source: USGS 1 meter dem  
Interval(ft): 3  
Min: 856.2  
Max: 1,101.8  
Range: 245.6  
Average: 1,000.3  
Standard Deviation: 53.74 ft

0ft 428ft 856ft



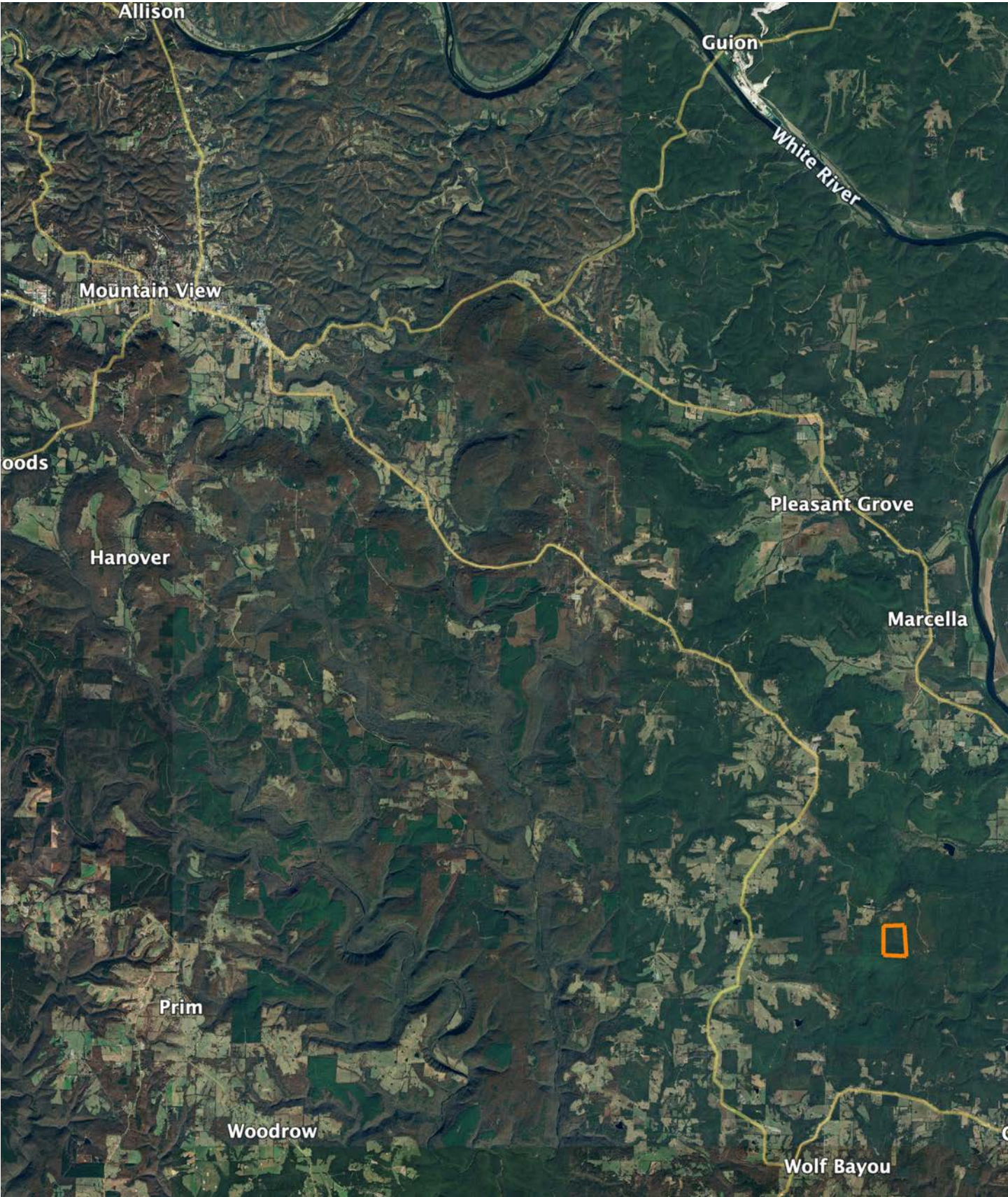
12/3/2025

36-13N-9W  
Stone County  
Arkansas

Boundary Center: 35° 42' 34.39, -91° 53' 38.11



# OVERVIEW MAP



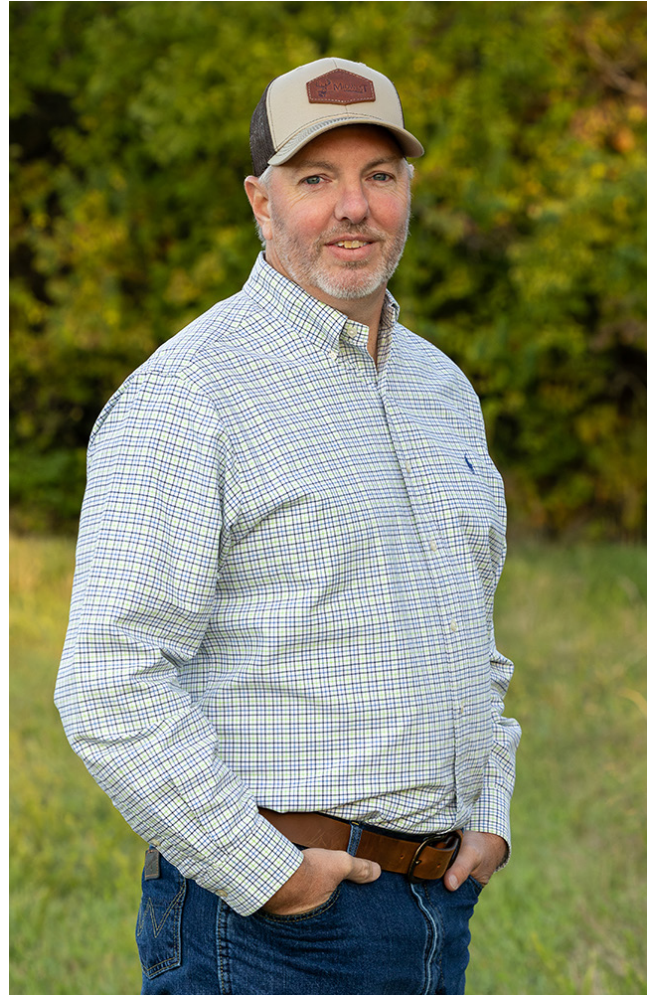


# AGENT CONTACT

Heath's passion for land was shaped by his upbringing in a farming community in Caraway, Arkansas, where he learned the importance of hard work and developed a love for nature from his family, who farmed cotton, corn, and wheat. His connection to the land grew through outdoor experiences with his great-grandfather and grandfather, spending time hunting and fishing along the St. Francis River. Those early experiences fostered a deep respect for land stewardship, which continues to guide him today.

With a degree in Agri-Business from Arkansas State University, Heath combines academic expertise with a personal commitment to the outdoors. He's not only owned and improved multiple properties for wildlife and recreation but also successfully bought and sold many properties, giving him firsthand knowledge of real estate processes and challenges.

Leveraging over 20 years of professional experience in income tax preparation, Heath excels in forming strong connections, truly listening to clients, and helping them navigate the complexities of real estate transactions. His problem-solving skills and deep understanding of land values make him a trusted partner for anyone looking to buy or sell land in Arkansas.



**HEATH PRIMM**

LAND AGENT

**870.205.3147**

HPrimm@MidwestLandGroup.com



**MidwestLandGroup.com**

This property is being offered by Midwest Land Group, LLC. 913.674.8010. All information provided by Midwest Land Group, LLC or their agents was acquired from sources deemed accurate and reliable, however we do not warrant its accuracy or completeness. Midwest Land Group, LLC assumes no liability for error, omission or investment results. Midwest Land Group, LLC. Licensed in Arkansas, Illinois, Iowa, Kansas, Minnesota, Missouri, Nebraska, Oklahoma, South Dakota, Tennessee, Texas, Wisconsin, and Wyoming.