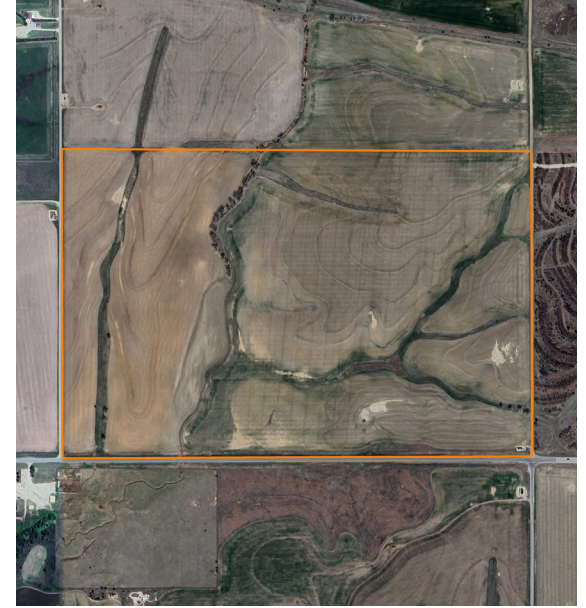


LAND FOR SALE

HIGHWAY 56 TILLABLE IN RICE COUNTY

COUNTY: **RICE**
STATE: **KANSAS**
ACRES: **231**



PROPERTY FEATURES

- 218 +/- tillable acres
- Spring 2026 possession
- Highway 56 frontage
- Great terraces
- Class II & III soils
- NCCPI 63.5
- Mineral rights available
- S24-T19-6W
- Taxes: \$3,195.36
- Deer Unit 6



For more information, contact:

TYLER HEIL, Land Agent

620.869.7083 | THeil@MidwestLandGroup.com

MidwestLandGroup.com



This property is being offered by Midwest Land Group, LLC, 7111 W. 151st Street, Ste. 27, Overland Park, KS 66223, 913.674.8010.
Licensed in AL, AR, IA, IL, IN, KS, KY, LA, MN, MO, MS, MT, NE, OH, OK, SD, TN, TX, WI, and WY.