

MIDWEST LAND GROUP PRESENTS

132 ACRES IN

POINSETT COUNTY ARKANSAS



MidwestLandGroup.com

MIDWEST LAND GROUP IS HONORED TO PRESENT

132 +/- ACRES ON CROWLEY'S RIDGE - LAKE, WILDLIFE, AND PRIME HOMESITES NEAR JONESBORO

This stunning 132 +/- acre property in Poinsett County, Arkansas, is located just 15 minutes from Jonesboro and sits beautifully atop Crowley's Ridge. With paved road access and electric and fiber internet available, the land offers the perfect balance of seclusion and convenience. The property is well-suited for a private estate, dream home, or future development, providing multiple potential homesites across gently rolling terrain.

A 5-acre watershed lake stocked with bass and bream serves as a centerpiece of the property, while freshly groomed trails make navigating the land easy and enjoyable. Abundant wildlife, including deer and turkey, makes this an excellent recreational and hunting property. Whether you're looking for a peaceful retreat, investment opportunity, or a place to build and enjoy the outdoors, this property delivers exceptional versatility and natural beauty.



PROPERTY FEATURES

COUNTY: **POINSETT** | STATE: **ARKANSAS** | ACRES: **132**

- 15 minutes from Jonesboro, AR
- Located on Crowley's Ridge
- Perfect for your dream home
- Development opportunity
- 5-acre watershed lake loaded with bass and bream
- Loaded with deer and turkey
- Freshly groomed trails perfect for navigating the property
- Paved road access
- Electric and fiber internet available

FRESHLY GROOMED TRAILS



PERFECT FOR YOUR DREAM HOME



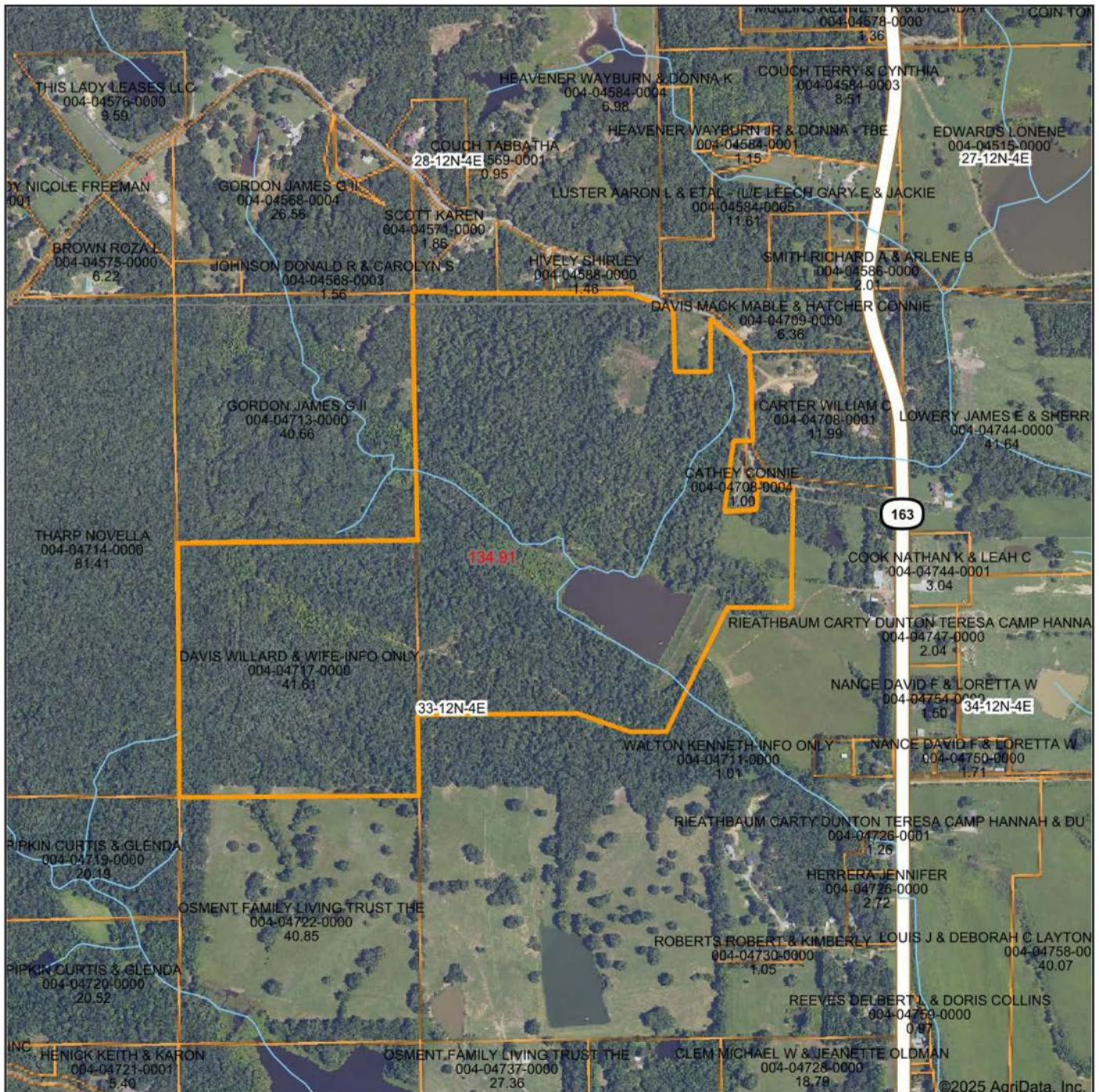
5-ACRE WATERSEHD LAKE



LOCATED IN CROWLEY'S RIDGE



AERIAL MAP



Maps Provided By:



© AgriData, Inc. 2025

www.AgriDataInc.com

Boundary Center: 35° 37' 53.2, -90° 40' 4

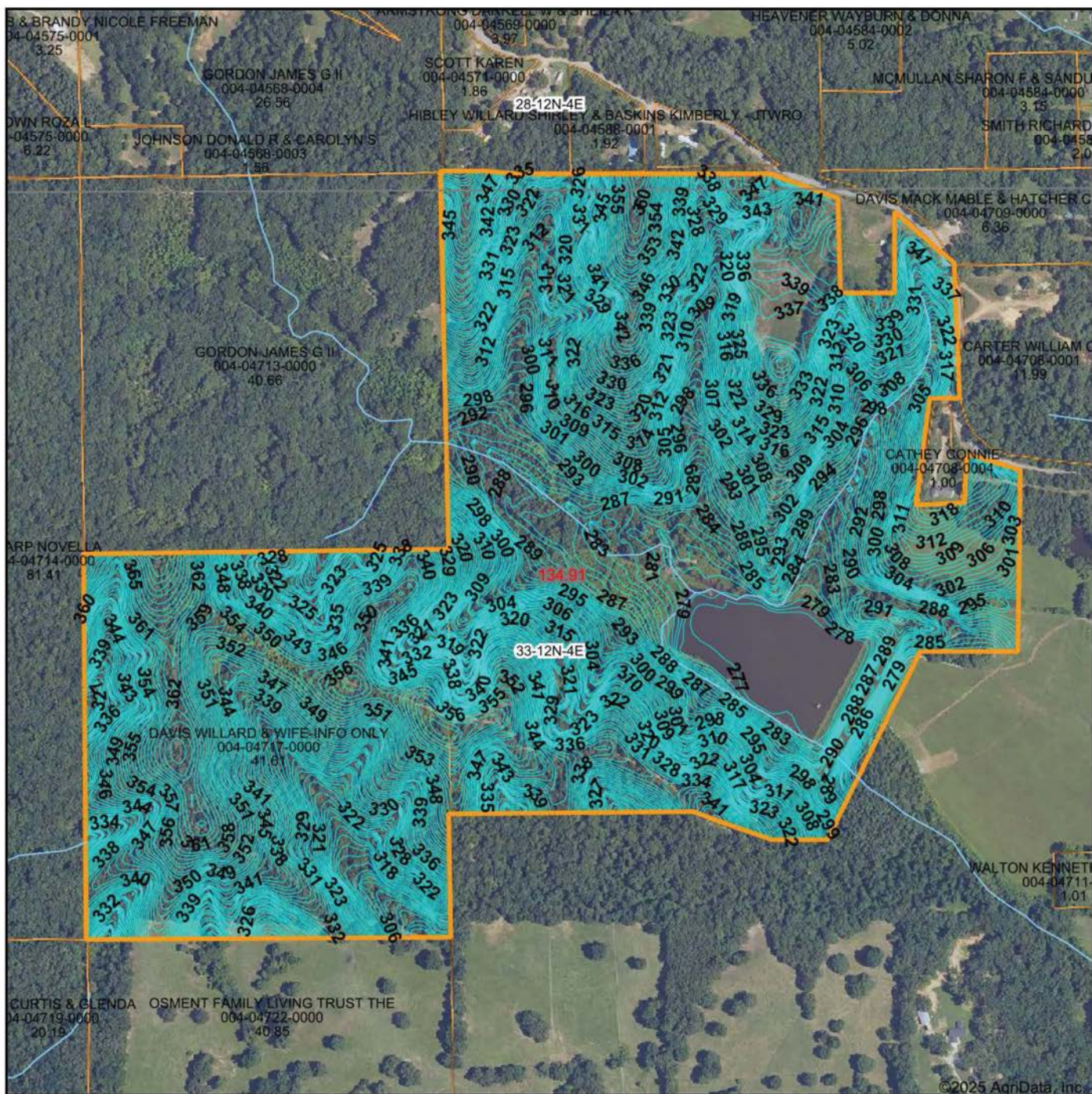
0ft 850ft 1700ft

33-12N-4E
Poinsett County
Arkansas



12/30/2025

TOPOGRAPHY MAP



Maps Provided By:



© AgriData, Inc. 2025

www.AgridataInc.com

Source: USGS 10 meter dem

Interval(ft): 1.0

Min: 267.5

Max: 372.9

Range: 105.4

Average: 321.1

Standard Deviation: 25.23 ft

0ft 558ft 1116ft

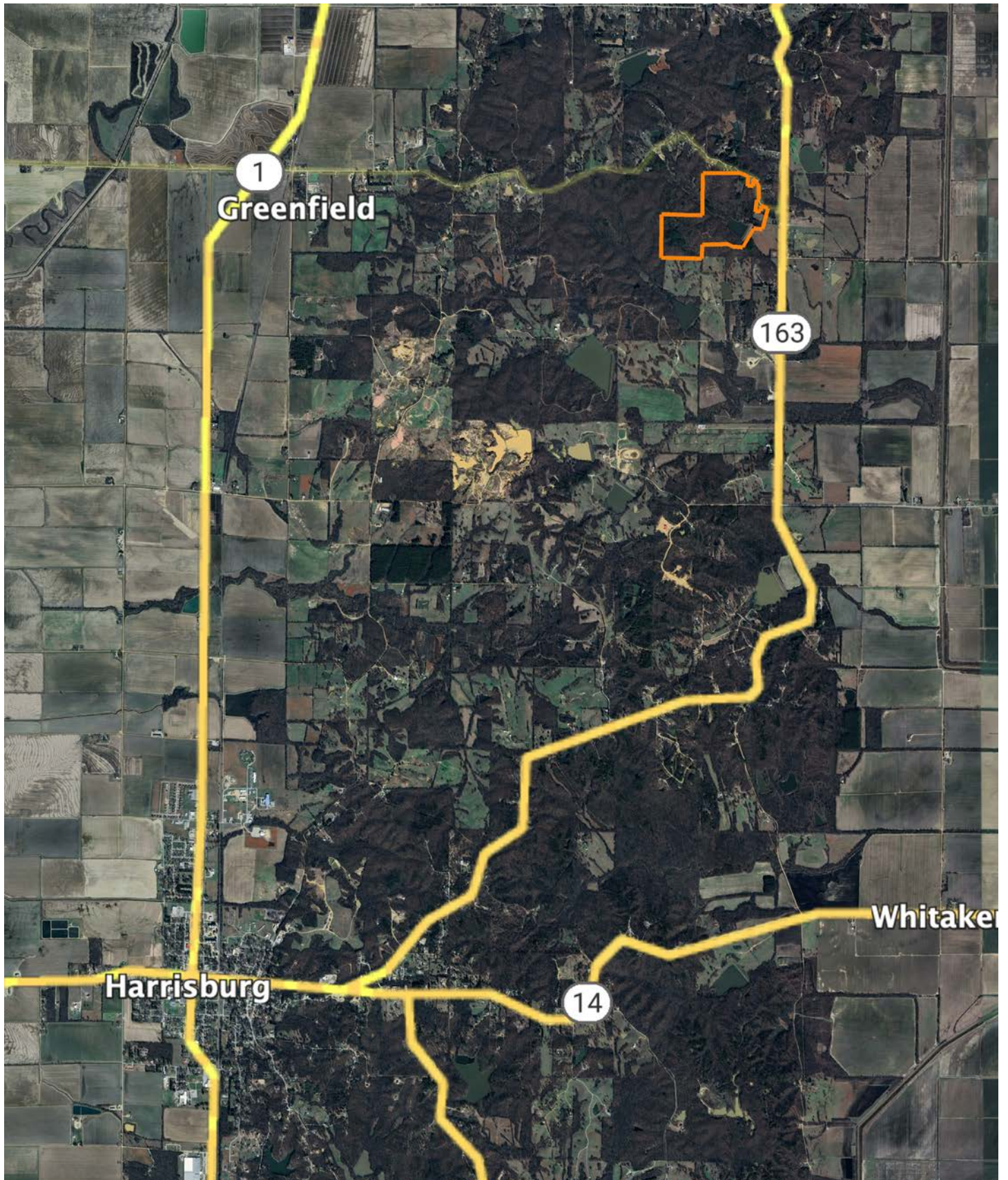


12/30/2025

33-12N-4E
Polinsett County
Arkansas

Boundary Center: 35° 37' 54.98, -90° 40' 4

OVERVIEW MAP



AGENT CONTACT

At the heart of Arkansas' vibrant land sales market is Tanner K Hoke, a land agent with Midwest Land Group who brings a fresh perspective and a deep-rooted passion for the land to every transaction. Tanner's journey from the fields of Jonesboro, where he was born, to his current home in Paragould, where he lives with his wife Jessie and their children, Hallie and Hudson, is a testament to his commitment to the Arkansas community and its land. His upbringing in a region known for its rich agricultural heritage, has equipped him with a unique blend of skills and insights invaluable to both buyers and sellers in the land market.

Tanner's approach to land sales is deeply influenced by his personal passions and professional experiences. With over a decade of involvement in row crop farming and a lifetime spent hunting across the country, Tanner has cultivated an extensive knowledge of land value, wildlife management, and agricultural practices. His hobbies, which include everything from snow skiing to land improvement, not only enrich his life but also enhance his ability to connect with clients over shared interests, making him a relatable and trusted advisor in their land transactions.

What distinguishes Tanner in the competitive field of real estate is his philosophy that every sale is an opportunity to forge lasting relationships, not just complete a business transaction. His personable nature and extensive network are invaluable assets in bringing together buyers and sellers, creating matches that fulfill dreams and respect the intrinsic value of the land. For those seeking to navigate the complexities of buying or selling property in Arkansas, Tanner Hoke offers not just his services, but a partnership grounded in respect, passion, and a shared love for the great outdoors.



TANNER HOKE,
LAND AGENT

870.637.0261

THoke@MidwestLandGroup.com



MidwestLandGroup.com

This property is being offered by Midwest Land Group, LLC. 913.674.8010. All information provided by Midwest Land Group, LLC or their agents was acquired from sources deemed accurate and reliable, however we do not warrant its accuracy or completeness. Midwest Land Group, LLC assumes no liability for error, omission or investment results. Midwest Land Group, LLC. Licensed in Alabama, Arkansas, Illinois, Indiana, Iowa, Kansas, Kentucky, Louisiana, Minnesota, Mississippi, Missouri, Montana, Nebraska, Ohio, Oklahoma, South Dakota, Tennessee, Texas, Wisconsin, and Wyoming.