

MIDWEST LAND GROUP PRESENTS

100 ACRES IN

LOGAN COUNTY ARKANSAS



MidwestLandGroup.com

MIDWEST LAND GROUP IS HONORED TO PRESENT

100 +/- ACRES WITH LUSH FOOD PLOTS AND TRAILS

Located near the community of Lone, convenient to Highway 23 in Southwestern Logan County, this 100 +/- acre timber hunting tract is ready for its new owner. The property has been managed for deer hunting for years, with a network of trails, shooting lanes, and lush winter food plots. As you are driving through the property or walking the trails, you'll notice the perfect blend of mature and open pine timber, with great visibility and an abundance of stand locations, joining with thick bedding areas. Scattered hardwood timber throughout this mostly pine-covered property makes for great stand locations as well. These great attributes are, however, due to the lush winter food plots that stand out as a sea of green in the Logan County Forest.

This property is convenient to the Highway 71 and Highway 10 Corridor, making it a great choice for travel from many different directions. With frontage on Boy Scouts Road, and access to power and rural water, this would make a great cabin site, or a homesite as well.

If you are looking for a property with hunting improvements, you don't want to miss this one. Properties with hunting improvements of this caliber rarely come to market, and even fewer are paired with power and rural water readily available. Call today to schedule your personal UTV tour.



PROPERTY FEATURES

COUNTY: **LOGAN** | STATE: **ARKANSAS** | ACRES: **100**

- Lush food plots
- Trails and shooting lanes
- Open timber
- Thick bedding areas
- Mostly pine timber with scattered hardwoods
- Great stand locations
- County Road frontage on Boy Scout Road
- Power and rural water available
- Great privacy
- Loaded with deer sign



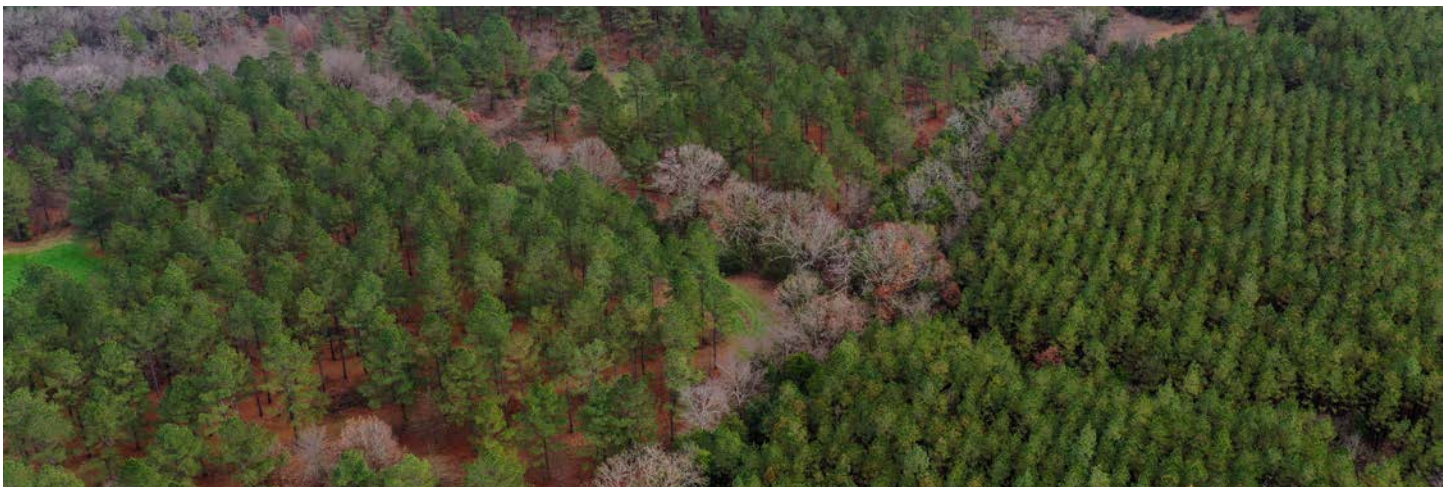
OPEN TIMBER



GREAT PRIVACY



TRAILS AND SHOOTING LANES



LOADED WITH DEER SIGN



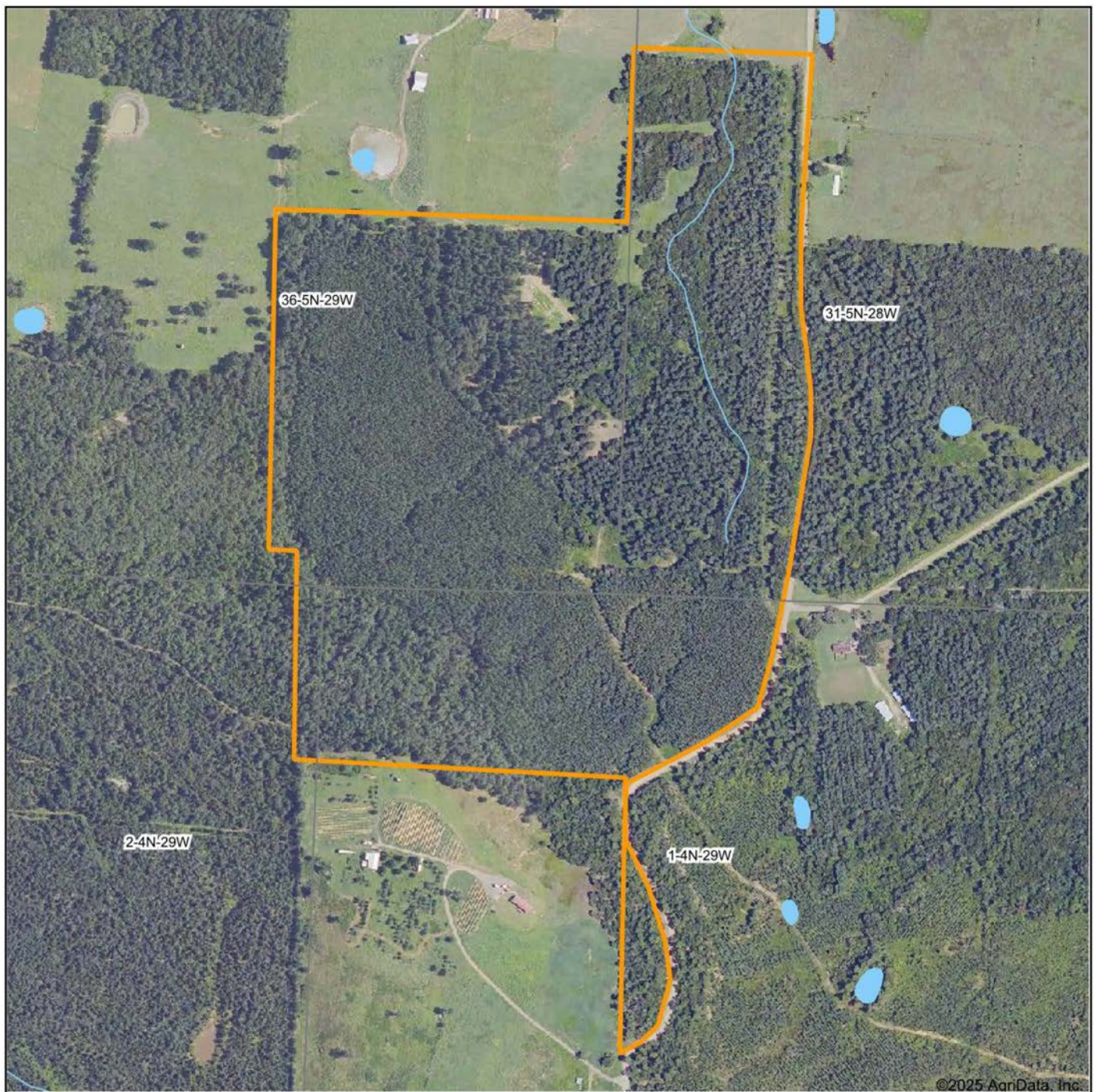
GREAT STAND LOCATIONS



ADDITIONAL PHOTOS



AERIAL MAP



Boundary Center: 35° 3' 12.79, -94° 2' 6.04

0ft 602ft 1205ft



Maps Provided By:



© AgriData, Inc. 2025

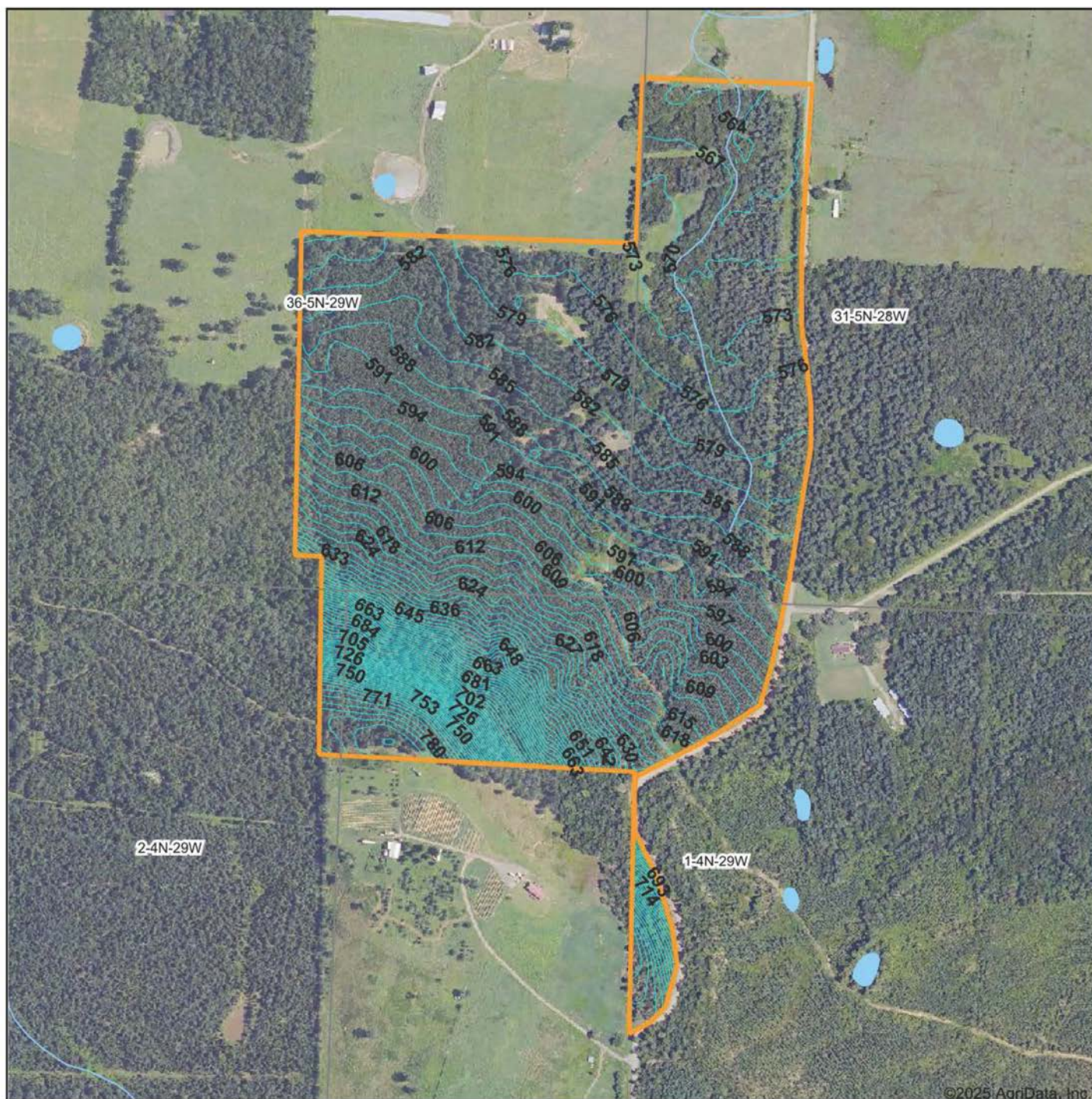
www.AgriDataInc.com

36-5N-29W
Logan County
Arkansas



12/5/2025

TOPOGRAPHY MAP



©2025 AgriData, Inc.



Maps Provided By



© AgriData, Inc. 2025 www.AgriDataInc.com

Source: USGS 10 meter dem
Interval(ft): 3.0
Min: 561.1
Max: 792.6
Range: 231.5
Average: 608.5
Standard Deviation: 50.33 ft

0ft 637ft 1274ft

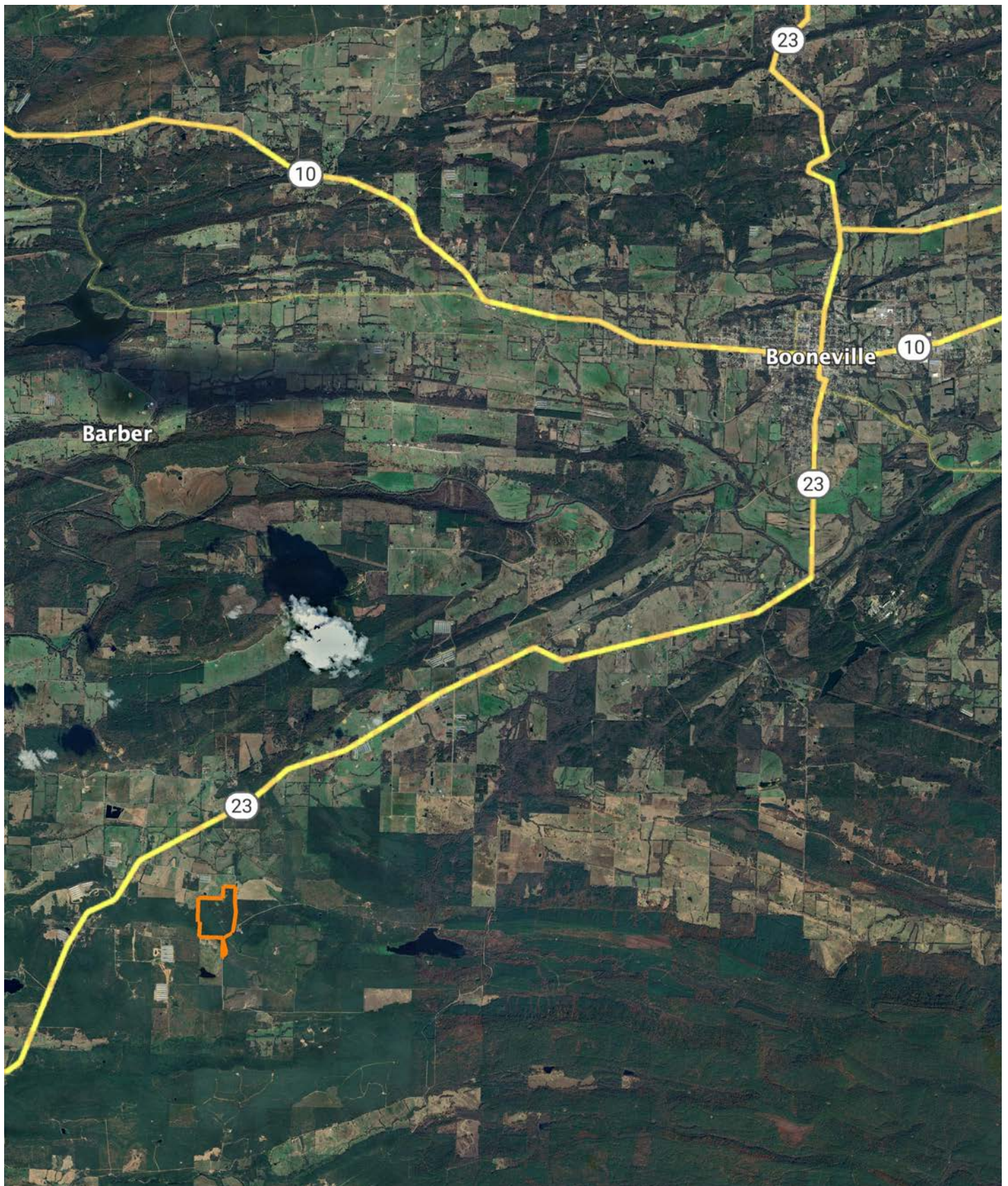


12/5/2025

36-5N-29W
Logan County
Arkansas

Boundary Center: 35° 3' 12.79, -94° 2' 6.04

OVERVIEW MAP



AGENT CONTACT

Jake Fowler has a love for agriculture. Between his formal education and lifetime of experience with cattle, horses, and poultry, he has a deep understanding of farming operations and how to maximize the efficiency of land. He knows the animals that can be raised in different areas, that soil and grass quality can make all the difference, and that location is integral to a farm's success. Jake has traveled all over western Arkansas and the River Valley area, gaining knowledge and contacts in the cattle, hay, horse, poultry, and timber industries. Born in Russellville, Arkansas, Jake went to Western Yell County High School in Havana, Arkansas, and Connors State College in Warner, Oklahoma, where he graduated cum laude. Before coming to Midwest Land Group, Jake pursued a career in logistics and land management.

Since joining Midwest Land Group, Jake has worked across western Arkansas and the Arkansas River Valley assisting clients with buying and selling cattle farms, estates, homes on acreage, hunting properties, timberland, and more. When he isn't busy helping clients, you can find Jake busy on the farm taking care of his land and cattle, deer hunting, turkey hunting, fishing, or team roping. Jake, his wife Lexie, and their son Wylie reside on their farm in Danville, Arkansas. Give Jake a call today to put his experience to work for you.



JAKE FOWLER, LAND AGENT
479.393.1997

JFowler@MidwestLandGroup.com



MidwestLandGroup.com

This property is being offered by Midwest Land Group, LLC. 913.674.8010. All information provided by Midwest Land Group, LLC or their agents was acquired from sources deemed accurate and reliable, however we do not warrant its accuracy or completeness. Midwest Land Group, LLC assumes no liability for error, omission or investment results. Midwest Land Group, LLC. Licensed in Alabama, Arkansas, Illinois, Indiana, Iowa, Kansas, Kentucky, Louisiana, Minnesota, Mississippi, Missouri, Montana, Nebraska, Ohio, Oklahoma, South Dakota, Tennessee, Texas, Wisconsin, and Wyoming.