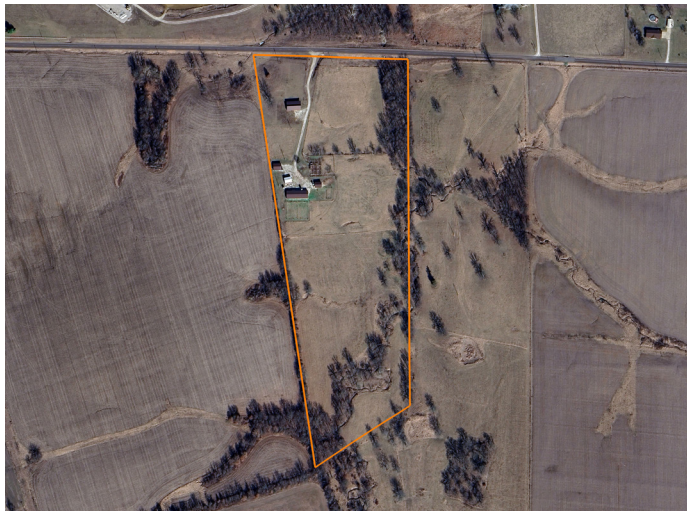


LAND FOR SALE

PERFECT SPOT IN LINCOLN COUNTY WITH A HOUSE, BARN, AND PASTURE



PROPERTY FEATURES

- Country living
- Beautiful, quaint ranch home
- 3-car garage
- Fully fenced/cross-fenced pasture
- Multiple barns
- Set up for egg production
- Just off the highway
- 15 minutes from Troy
- 5 minutes from Eolia



For more information, contact:

JAKE FELDMANN, Land Agent

314.675.0899 | JFeldmann@MidwestLandGroup.com

MidwestLandGroup.com

BUYERS, SELLERS, AND LAND – CONNECTED



COUNTY: **LINCOLN**

STATE: **MISSOURI**

ACRES: **20**

