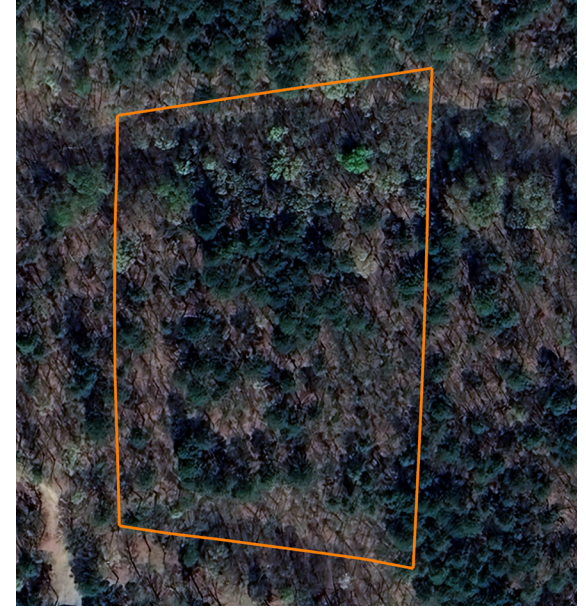


LAND FOR SALE

3.98 +/- ACRE DELAWARE COUNTY TIMBER TRACT

COUNTY: **DELAWARE**
STATE: **OKLAHOMA**
ACRES: **3.98**



PROPERTY FEATURES

- Massive pines and hardwoods
- Highway and County Road frontage
- Electric available
- Fabulous build site
- Additional lots available
- Investment opportunity
- Close proximity to Lake Eucha/Grand Lake/Spavinaw Lake
- Colcord Public Schools
- 30 minutes to Siloam Springs, Arkansas
- 1.5 hours to Joplin, Missouri
- 1.5 hours to Tulsa



For more information, contact:

KEVIN WILLIAMS, Land Agent

918.514.3165 | KWilliams@MidwestLandGroup.com

MidwestLandGroup.com



This property is being offered by Midwest Land Group, LLC, 7111 W. 151st Street, Ste. 27, Overland Park, KS 66223, 913.674.8010.
Licensed in AL, AR, IA, IL, IN, KS, KY, LA, MN, MO, MS, MT, NE, OH, OK, SD, TN, TX, WI, and WY.