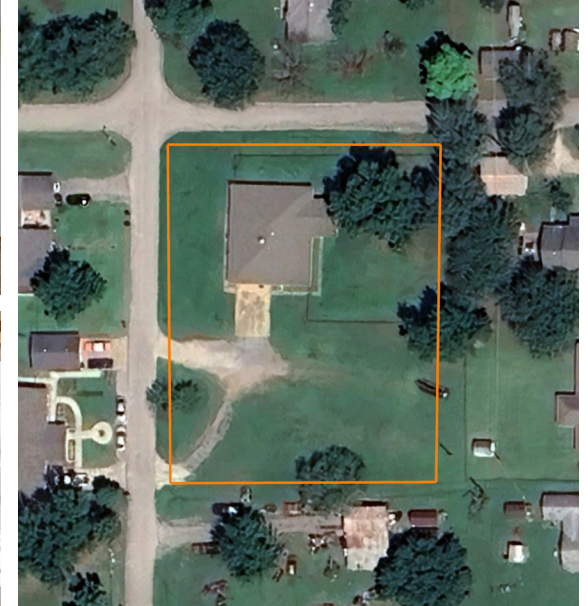


LAND FOR SALE

3 BEDROOM, 2 BATHROOM BRICK HOME NEAR TULSA SITUATED ON TWO LARGE LOTS

COUNTY: **CREEK**
STATE: **OKLAHOMA**
ACRES: **0.8**



PROPERTY FEATURES

- Brick home in Kellyville, approximately 20 minutes to Tulsa
- 3 bedrooms plus office (could be 4th bedroom)
- 2 full bathrooms
- Master bedroom with attached bath and large walk-in closet
- Wood-burning stove
- All appliances, including the washer and dryer
- Oversized 2-car garage
- Located on two large lots totaling approximately 0.8 acres
- Fenced large backyard with a separate dog pen
- Storm cellar

For more information, contact:

SUMMER WITTY, Land Broker

918.798.1561 | SWitty@MidwestLandGroup.com

MidwestLandGroup.com



This property is being offered by Midwest Land Group, LLC, 7111 W. 151st Street, Ste. 27, Overland Park, KS 66223, 913.674.8010. Licensed in AL, AR, IA, IL, IN, KS, KY, LA, MN, MO, MS, MT, NE, OH, OK, SD, TN, TX, WI, and WY.