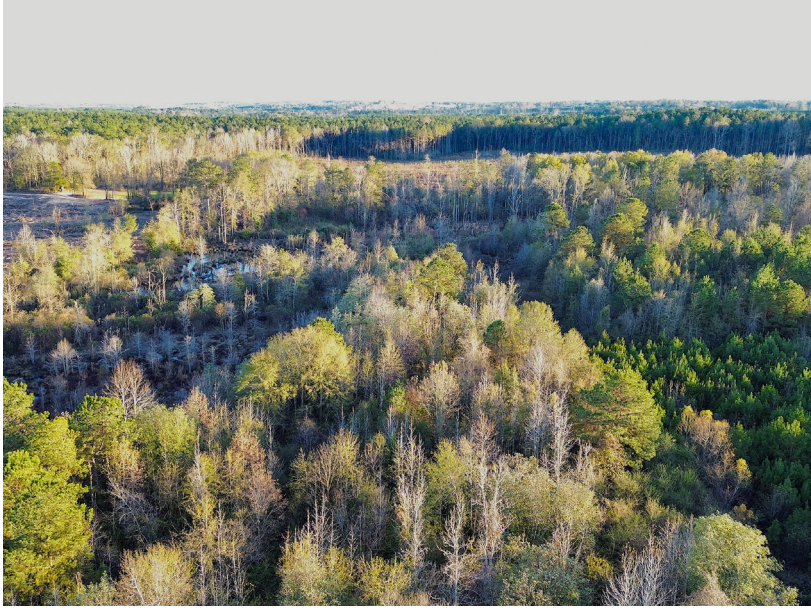


LAND FOR SALE

## VERSATILE 22 ACRES IN CLARKE COUNTY - IDEAL FOR HUNTING RECREATION AND FUTURE IMPROVEMENTS

COUNTY: **CLARKE**  
STATE: **MISSISSIPPI**  
ACRES: **22**



### PROPERTY FEATURES

- Located only ¼ mile off Interstate 59 for quick and convenient access
- Thick brush and natural cover provide excellent deer bedding areas
- Mixed hardwood stands offer quality habitat and foraging for wildlife
- Year-round creek forming the southern boundary of the property
- Small beaver pond creating ideal conditions for wood ducks and other waterfowl
- Strong potential for hunting, ATV riding, camping, and outdoor recreation
- Situated in the top-rated Enterprise School District, which is great for future homesite options
- Private and secluded setting while still close to town amenities

For more information, contact:

**JEREMY UTSEY**, Land Agent

**601.282.3505** | [JUtsey@MidwestLandGroup.com](mailto:JUtsey@MidwestLandGroup.com)

**MidwestLandGroup.com**



This property is being offered by Midwest Land Group, LLC, 7111 W. 151st Street, Ste. 27, Overland Park, KS 66223, 913.674.8010.  
Licensed in AL, AR, IA, IL, IN, KS, KY, LA, MN, MO, MS, MT, NE, OH, OK, SD, TN, TX, WI, and WY.