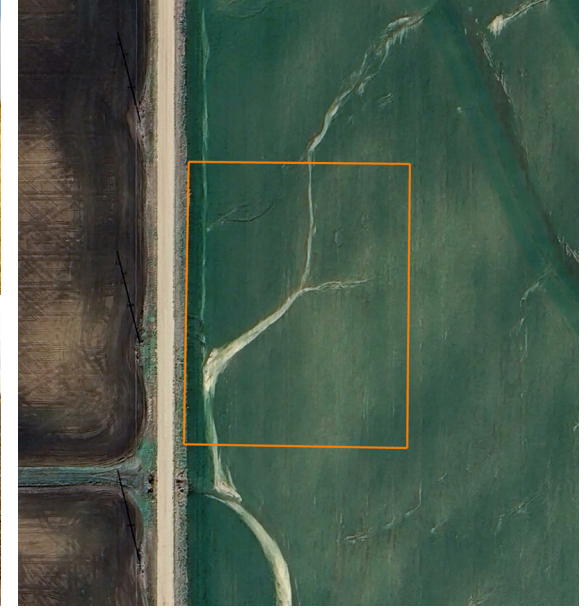


LAND FOR SALE

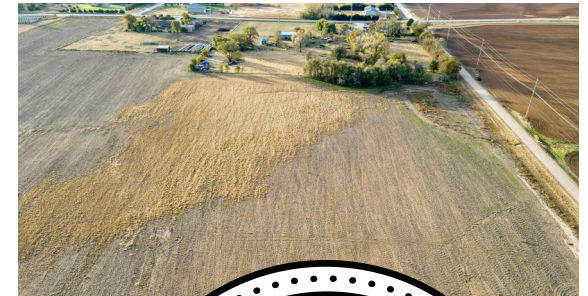
LOT 1 - SKYLINE ADDITION IN SEDGWICK COUNTY

COUNTY: **SEDGWICK**
STATE: **KANSAS**
ACRES: **2.4**



PROPERTY FEATURES

- Lot 1 - 2.426 surveyed acres
- 6 tracts available from 2.426 to 5.472 acres
- Stunning Kansas sunset views
- Award-winning school choices
- Electricity nearby
- Ample space for outbuildings
- No HOA or building restrictions
- 5 minutes to Garden Plain, KS
- 6 minutes to Cheney, KS
- 20 minutes to Wichita, KS
- 25 minutes to New Market Square



For more information, contact:

TYLER HEIL, Land Agent

620.869.7083 | THeil@MidwestLandGroup.com

MidwestLandGroup.com

This property is being offered by Midwest Land Group, LLC, 7111 W. 151st Street, Ste. 27, Overland Park, KS 66223, 913.674.8010.
Licensed in AL, AR, IL, IN, IA, KS, KY, LA, MN, MS, MO, MT, NE, OH, OK, SD, TN, TX, WI, and WY.

