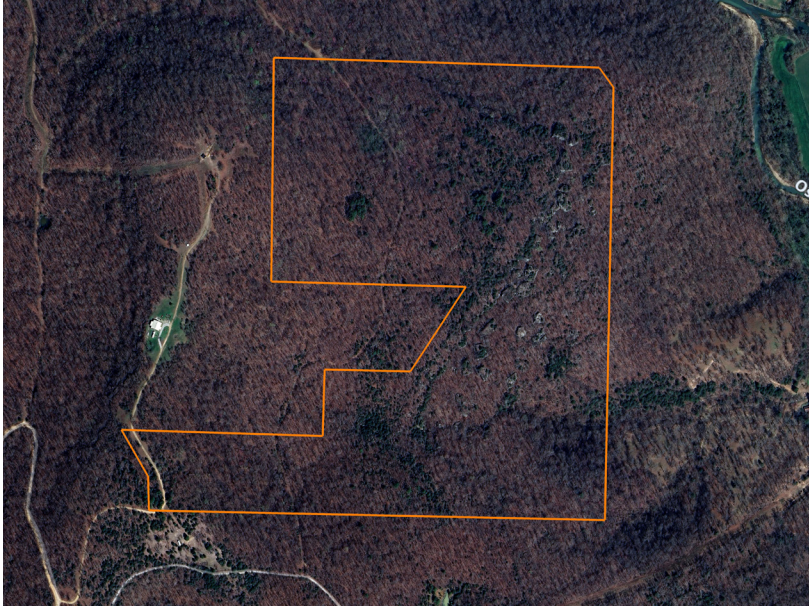


LAND FOR SALE

# RUGGED BEAUTY AND GREAT HUNTING IN THE OZARK MOUNTAINS

COUNTY: **CARROLL**  
STATE: **ARKANSAS**  
ACRES: **55**



## PROPERTY FEATURES

- Multiple access points
- Mix of large flat benches and gorgeous bluffs
- Abundant wildlife, including deer, bear, and turkey
- Scenic views
- Artifact potential
- Bluffs and boulders with amazing crevasses, overhangs, and small caves
- Rock formations are highly accessible and explorable
- Recent history of unpressured game
- Just 55 minutes from Springdale, AR

For more information, contact:

**MAX FARRELL**, Land Agent

**479.718.6457** | [MFarrell@MidwestLandGroup.com](mailto:MFarrell@MidwestLandGroup.com)

**MidwestLandGroup.com**

This property is being offered by Midwest Land Group, LLC, 7111 W. 151st Street, Ste. 27, Overland Park, KS 66223, 913.674.8010.  
Licensed in AL, AR, IA, IL, IN, KS, KY, LA, MN, MO, MS, MT, NE, OH, OK, SD, TN, TX, WI, and WY.



LAND FOR SALE

# GORGEOUS 80 ACRE FARM WITH GREAT DEER HUNTING IN BUCHANAN COUNTY

PRICE: **\$267,000**  
COUNTY: **BUCHANAN**  
STATE: **MISSOURI**  
ACRES: **80**



## PROPERTY FEATURES

- Prime property to build a home or cabin
- Gorgeous views
- Secluded southern exposure build site
- 25 minutes from I-29 and highway 152
- Well-maintained road only 1/4 mile to asphalt
- Great mix of open pasture and timber
- Beautiful 5 acre lake
- Great hunting
- Strong deer and turkey population
- Fertile soils for hay or row crop production



For more information, contact:

**MAX FARRELL**, Land Agent

**479.718.6457** | [MFarrell@MidwestLandGroup.com](mailto:MFarrell@MidwestLandGroup.com)

**MidwestLandGroup.com**



This property is being offered by Midwest Land Group, LLC, 7111 W. 151st Street, Ste. 27, Overland Park, KS 66223, 913.674.8010. Licensed in AL, AR, IA, IL, IN, KS, KY, LA, MN, MO, MS, MT, NE, OH, OK, SD, TN, TX, WI, and WY.

LAND FOR SALE

# GORGEOUS 80 ACRE FARM WITH GREAT DEER HUNTING IN BUCHANAN COUNTY

PRICE: **\$267,000**

COUNTY: **BUCHANAN**

STATE: **MISSOURI**

ACRES: **80**



## PROPERTY FEATURES

- Prime property to build a home or cabin
- Gorgeous views
- Secluded southern exposure build site
- 25 minutes from I-29 and highway 152
- Well-maintained road only 1/4 mile to asphalt
- Great mix of open pasture and timber
- Beautiful 5 acre lake
- Great hunting
- Strong deer and turkey population
- Fertile soils for hay or row crop production



For more information, contact:

**MAX FARRELL**, Land Agent

**479.718.6457** | [MFarrell@MidwestLandGroup.com](mailto:MFarrell@MidwestLandGroup.com)

**MidwestLandGroup.com**



This property is being offered by Midwest Land Group, LLC, 7111 W. 151st Street, Ste. 27, Overland Park, KS 66223, 913.674.8010.  
Licensed in AL, AR, IA, IL, IN, KS, KY, LA, MN, MO, MS, MT, NE, OH, OK, SD, TN, TX, WI, and WY.

# LAND FOR SALE

## GORGEOUS 80 ACRE FARM WITH GREAT HUNTING IN BUCHANAN COUNTY



### PROPERTY FEATURES

- Prime property to build a home or cabin
- Gorgeous views
- Secluded southern exposure build site
- 25 minutes from I-29 and highway 152
- Well-maintained road only 1/4 mile to asphalt
- Great mix of open pasture and timber
- Beautiful 5 acre lake
- Great hunting
- Strong deer and turkey population
- Fertile soils for hay or row crop production



PRICE: **\$267,000**

COUNTY: **BUCHANAN**

STATE: **MISSOURI**

ACRES: **80**

For more information, contact:

**MAX FARRELL**, Land Agent

**479.718.6457** | [MFarrell@MidwestLandGroup.com](mailto:MFarrell@MidwestLandGroup.com)

**MidwestLandGroup.com** BUYERS, SELLERS, AND LAND – CONNECTED

This property is being offered by Midwest Land Group, LLC, 7111 W. 151st Street, Ste. 27, Overland Park, KS 66223, 913.674.8010.  
Licensed in AL, AR, IA, IL, IN, KS, KY, LA, MN, MO, MS, MT, NE, OH, OK, SD, TN, TX, WI, and WY.

