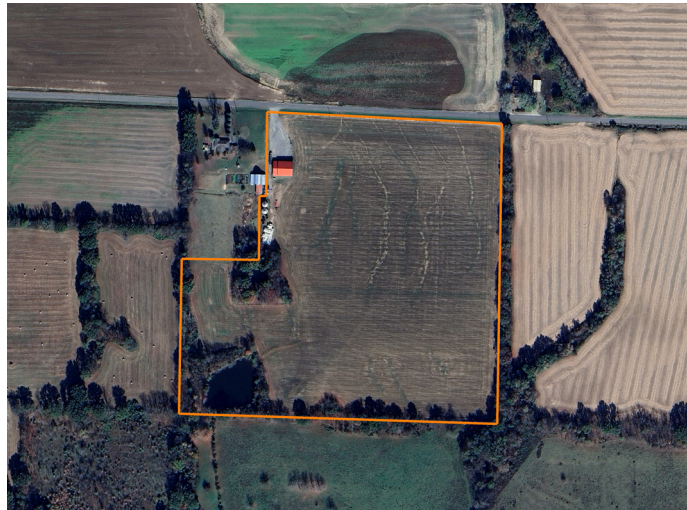


LAND FOR SALE

35 +/- PRODUCTIVE AILLABLE ACRES WITH AN INCREDIBLE SHOP



PROPERTY FEATURES

- Great access off Highway K
- 35 +/- acres productive tillable ground
- 60'x80' insulated shop
- Radiant propane-heated floors in shop
- Septic
- Drilled well at shop
- Almost 1-acre pond
- Better than average yields on crop production
- Fenced on 3 sides
- 40 minutes to Cape Girardeau



PRICE: **\$377,700**

COUNTY: **STODDARD**

STATE: **MISSOURI**

ACRES: **35**



For more information, contact:

JASON STOKES, Land Agent

636.465.9445 | JStokes@MidwestLandGroup.com

MidwestLandGroup.com BUYERS, SELLERS, AND LAND – CONNECTED

This property is being offered by Midwest Land Group, LLC, 7111 W. 151st Street, Ste. 27, Overland Park, KS 66223, 913.674.8010. Licensed in AL, AR, IL, IN, IA, KS, KY, LA, MN, MS, MO, MT, NE, OH, OK, SD, TN, TX, WI, and WY.