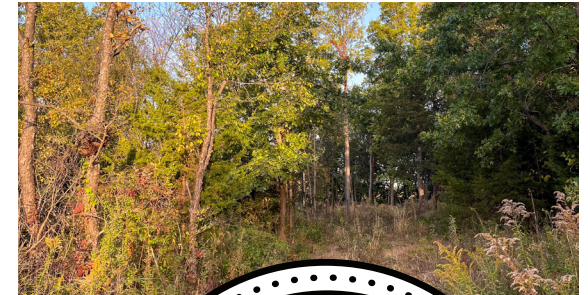
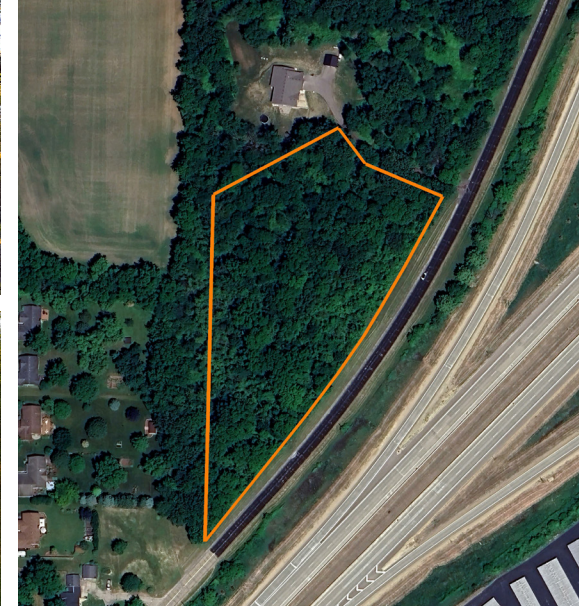


LAND FOR SALE

COMMUTER'S RETREAT - 4 WOODED ACRES

PRICE: **\$199,000**
COUNTY: **ROCK**
STATE: **WISCONSIN**
ACRES: **4.1**



PROPERTY FEATURES

- Mature timber
- High-quality ground
- Tranquil location
- CSM and Soil Evaluation complete
- Paved road and private driveway
- Quick access to I-43 and I-39
- Outskirts of Beloit
- 30 minutes to Rockford
- 50 minutes to Madison
- 1 hour to Milwaukee Lakeshore

For more information, contact:

ERIC FABICH, Land Agent

608.721.6933 | EFabich@MidwestLandGroup.com

MidwestLandGroup.com

This property is being offered by Midwest Land Group, LLC, 7111 W. 151st Street, Ste. 27, Overland Park, KS 66223, 913.674.8010. Licensed in AL, AR, IL, IN, IA, KS, KY, LA, MN, MS, MO, MT, NE, OH, OK, SD, TN, TX, WI, and WY.

