

LAND FOR SALE

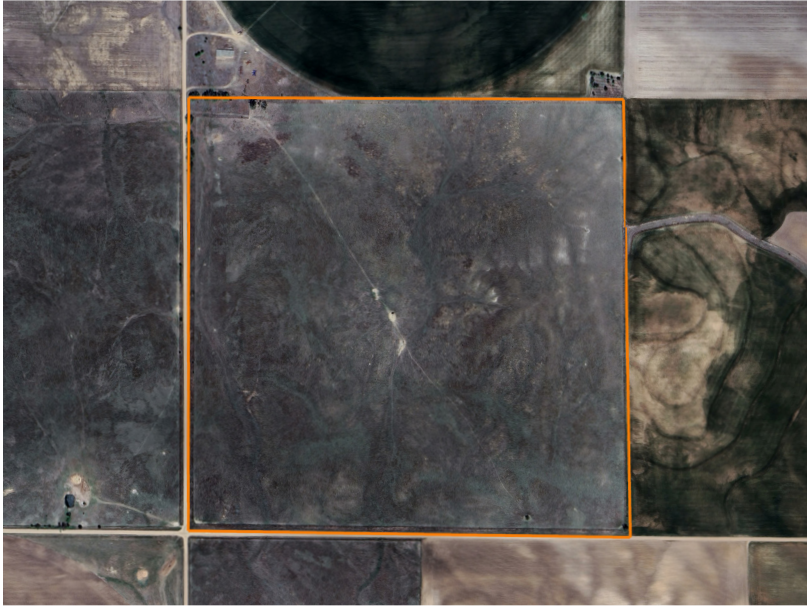
OPEN PASTURE IN EAST PRATT COUNTY

PRICE: **\$285,000**

COUNTY: **PRATT**

STATE: **KANSAS**

ACRES: **158**



PROPERTY FEATURES

- 158.23 acres
- 96.5 acre base
- Expired CRP pasture
- Solar powered well
- Bluestem & Buffalo grass
- Excellent access
- Close to major cattle markets
- Immediate possession
- Perimeter fenced
- 12 miles to Pratt
- 60 miles to Hutchinson
- 64 miles to Wichita
- 92 miles to Dodge City

For more information, contact:

TYLER HEIL, Land Agent

620.869.7083 | THeil@MidwestLandGroup.com

MidwestLandGroup.com

This property is being offered by Midwest Land Group, LLC, 7111 W. 151st Street, Ste. 27, Overland Park, KS 66223, 913.674.8010. Licensed in AL, AR, IA, IL, IN, KS, KY, LA, MN, MO, MS, MT, NE, OH, OK, SD, TN, TX, WI, and WY.

