

LAND FOR SALE

# FARMLAND AND PRIME KANSAS HUNTING IN MARSHALL COUNTY

PRICE: **\$1,475,770**  
COUNTY: **MARSHALL**  
STATE: **KANSAS**  
ACRES: **238**



## PROPERTY FEATURES

- Convenient access to nearby towns
- 135 +/- acres of tillable farmland
- Reliable agricultural income
- Balance of timber, native grasses, and rolling terrain
- Excellent whitetail deer habitat with strong local genetics
- Consistent trophy potential in a proven hunting area
- Timbered draws and grass edges create natural travel corridors
- Multiple ideal stand and blind locations throughout the property
- Abundant wildlife
- Diverse habitat
- Scenic mix of cropland and timber

For more information, contact:

**PHILIP LIERZ**, Land Agent

**785.685.0043** | [PLierz@MidwestLandGroup.com](mailto:PLierz@MidwestLandGroup.com)

**MidwestLandGroup.com**



This property is being offered by Midwest Land Group, LLC, 7111 W. 151st Street, Ste. 27, Overland Park, KS 66223, 913.674.8010.  
Licensed in AL, AR, IL, IN, IA, KS, KY, LA, MN, MS, MO, MT, NE, OH, OK, SD, TN, TX, WI, and WY.





LAND FOR SALE

# GORGEOUS 80 ACRE FARM WITH GREAT DEER HUNTING IN BUCHANAN COUNTY

PRICE: **\$267,000**

COUNTY: **BUCHANAN**

STATE: **MISSOURI**

ACRES: **80**



## PROPERTY FEATURES

- Prime property to build a home or cabin
- Gorgeous views
- Secluded southern exposure build site
- 25 minutes from I-29 and highway 152
- Well-maintained road only 1/4 mile to asphalt
- Great mix of open pasture and timber
- Beautiful 5 acre lake
- Great hunting
- Strong deer and turkey population
- Fertile soils for hay or row crop production



For more information, contact:

**PHILIP LIERZ**, Land Agent

**785.685.0043** | [PLierz@MidwestLandGroup.com](mailto:PLierz@MidwestLandGroup.com)

**MidwestLandGroup.com**



This property is being offered by Midwest Land Group, LLC, 7111 W. 151st Street, Ste. 27, Overland Park, KS 66223, 913.674.8010. Licensed in AL, AR, IL, IN, IA, KS, KY, LA, MN, MS, MO, MT, NE, OH, OK, SD, TN, TX, WI, and WY.



LAND FOR SALE

# GORGEOUS 80 ACRE FARM WITH GREAT DEER HUNTING IN BUCHANAN COUNTY

PRICE: **\$267,000**

COUNTY: **BUCHANAN**

STATE: **MISSOURI**

ACRES: **80**



## PROPERTY FEATURES

- Prime property to build a home or cabin
- Gorgeous views
- Secluded southern exposure build site
- 25 minutes from I-29 and highway 152
- Well-maintained road only 1/4 mile to asphalt
- Great mix of open pasture and timber
- Beautiful 5 acre lake
- Great hunting
- Strong deer and turkey population
- Fertile soils for hay or row crop production

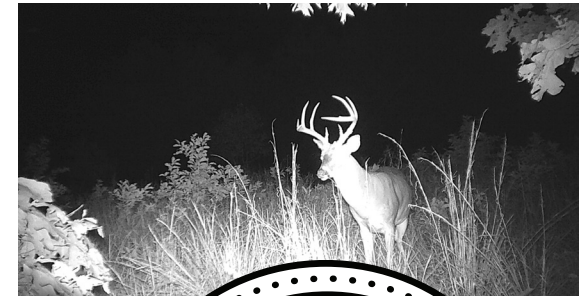


For more information, contact:

**PHILIP LIERZ**, Land Agent

**785.685.0043** | [PLierz@MidwestLandGroup.com](mailto:PLierz@MidwestLandGroup.com)

**MidwestLandGroup.com**

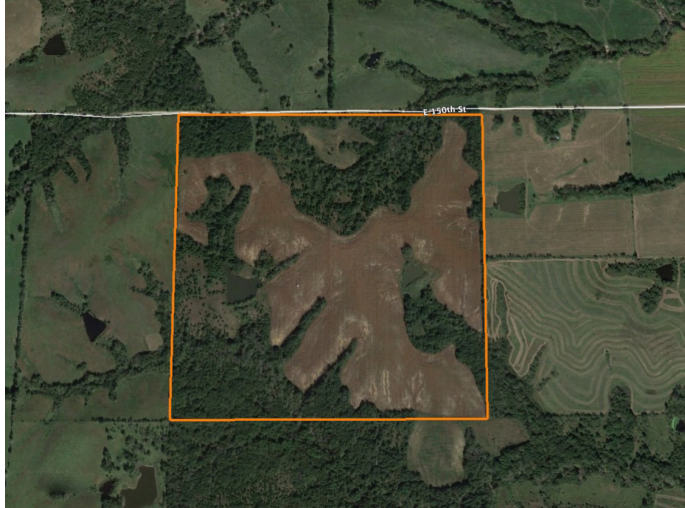


This property is being offered by Midwest Land Group, LLC, 7111 W. 151st Street, Ste. 27, Overland Park, KS 66223, 913.674.8010. Licensed in AL, AR, IL, IN, IA, KS, KY, LA, MN, MS, MO, MT, NE, OH, OK, SD, TN, TX, WI, and WY.



# LAND FOR SALE

## GORGEOUS 80 ACRE FARM WITH GREAT HUNTING IN BUCHANAN COUNTY



### PROPERTY FEATURES

- Prime property to build a home or cabin
- Gorgeous views
- Secluded southern exposure build site
- 25 minutes from I-29 and highway 152
- Well-maintained road only 1/4 mile to asphalt
- Great mix of open pasture and timber
- Beautiful 5 acre lake
- Great hunting
- Strong deer and turkey population
- Fertile soils for hay or row crop production



PRICE: **\$267,000**

COUNTY: **BUCHANAN**

STATE: **KANSAS**

ACRES: **80**



For more information, contact:

**PHILIP LIERZ**, Land Agent

**785.685.0043** | [PLierz@MidwestLandGroup.com](mailto:PLierz@MidwestLandGroup.com)

**MidwestLandGroup.com** BUYERS, SELLERS, AND LAND – CONNECTED

This property is being offered by Midwest Land Group, LLC, 7111 W. 151st Street, Ste. 27, Overland Park, KS 66223, 913.674.8010.  
Licensed in AL, AR, IL, IN, IA, KS, KY, LA, MN, MS, MO, MT, NE, OH, OK, SD, TN, TX, WI, and WY.