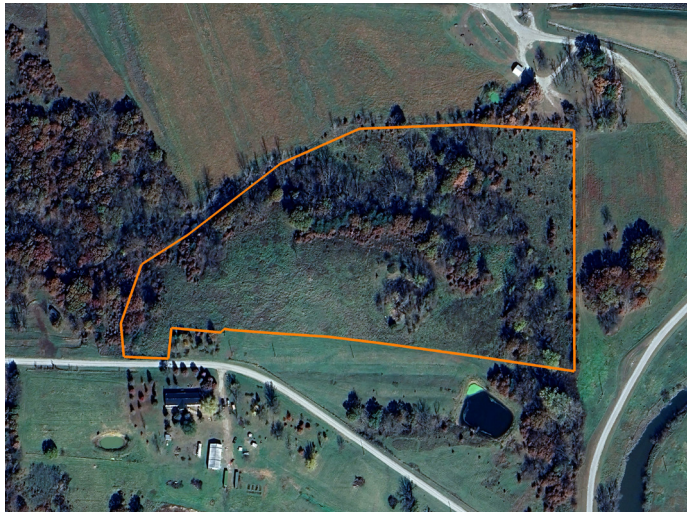


LAND FOR SALE

GORGEOUS BUILD SITE NEXT TO HARRISON COUNTY LAKE



PROPERTY FEATURES

- Build site
- Good deer hunting
- Gorgeous view
- Great privacy
- Great layout
- Utilities available
- Rare offering
- 15 minutes to Bethany, MO
- 15 minutes to I-35



For more information, contact:

BRETT ROBERTS, Land Agent

816.826.3245 | BrettRoberts@MidwestLandGroup.com

MidwestLandGroup.com BUYERS, SELLERS, AND LAND – CONNECTED

This property is being offered by Midwest Land Group, LLC, 7111 W. 151st Street, Ste. 27, Overland Park, KS 66223, 913.674.8010.
Licensed in AL, AR, IL, IN, IA, KS, KY, LA, MN, MS, MO, MT, NE, OH, OK, SD, TN, TX, WI, and WY.



PRICE: **\$98,000**

COUNTY: **HARRISON**

STATE: **MISSOURI**

ACRES: **14**

