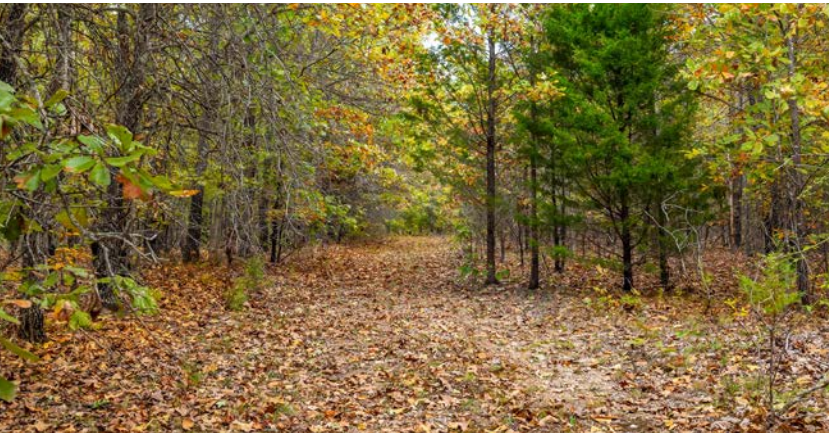


MIDWEST LAND GROUP PRESENTS



DOUGLAS COUNTY, MO

160 ACRES



MidwestLandGroup.com

MIDWEST LAND GROUP IS HONORED TO PRESENT

CLASSIC OZARKS HUNTING RETREAT

Tucked away in the Dury area of Douglas County, Missouri, this 160-acre Ozarks retreat offers everything an outdoorsman could ask for — comfort, tradition, accessibility, and incredible habitat. This property has served as a long-time hunting camp and weekend getaway for decades, and it's ready for new memories to be made.

A hunting cabin with full utilities sits privately on the land, offering the perfect basecamp for deer season or a quiet weekend escape. The farm features highway frontage for convenient access and county road frontage along the back side.

The property combines open pasture along the highway with mature timber throughout, featuring a flat ridge system that provides usable terrain, stand locations, and natural travel routes for deer and turkey. You'll find a wet-weather creek, ponds, and an established trail system that winds throughout the property for easy access.

Loaded with deer and turkey sign, this place has proven itself as a productive hunting property for quite some time. Whether you're looking for a weekend getaway, hunting camp, or future homestead in the Ozarks, this 160-acre Douglas County gem checks all the boxes.



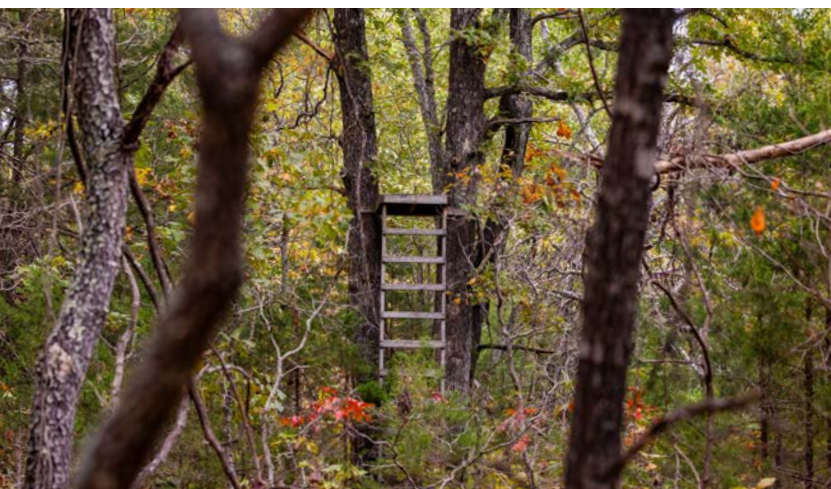
PROPERTY FEATURES

COUNTY: **DOUGLAS** | STATE: **MISSOURI** | ACRES: **160**

- Hunting cabin
- Electric
- Septic
- Well house
- Mature timber
- Highway frontage
- Pasture/timber mix
- Trail system
- Great hunting
- Wet-weather creek
- Ponds

GREAT HUNTING

This property has served as a long-time hunting camp and weekend getaway for decades, and it's ready for new memories to be made.



PONDS



HUNTING CABIN AND WELL HOUSE



PASTURE/TIMBER MIX

The property combines open pasture along the highway with mature timber throughout, featuring a flat ridge system that provides usable terrain, stand locations, and natural travel routes for deer and turkey.



TRAIL SYSTEM



HIGHWAY FRONTAGE



ADDITIONAL PHOTOS



AERIAL MAP



Boundary Center: 36° 55' 1.06, -92° 21' 22.38

0ft 1797ft 3594ft



Maps Provided By:



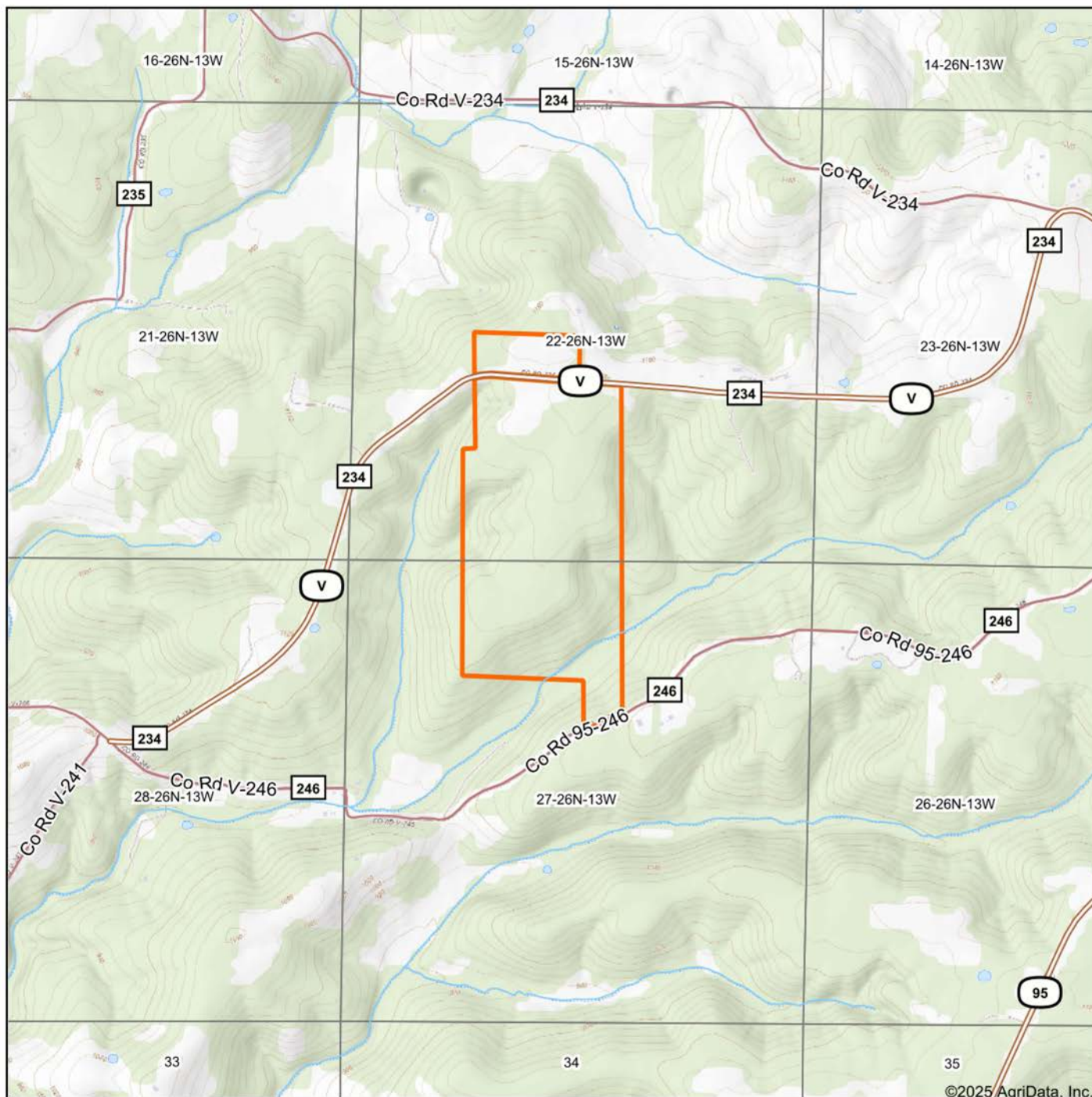
© AgriData, Inc. 2023 www.AgrIDataInc.com

22-26N-13W
Douglas County
Missouri



10/20/2025

TOPOGRAPHY MAP



©2025 AgriData, Inc.



Maps Provided By:



© AgriData, Inc. 2023 www.AgriDataInc.com

Map Center: 36° 54' 58.43, -92° 21' 20.77

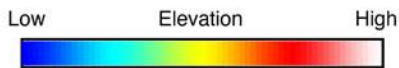
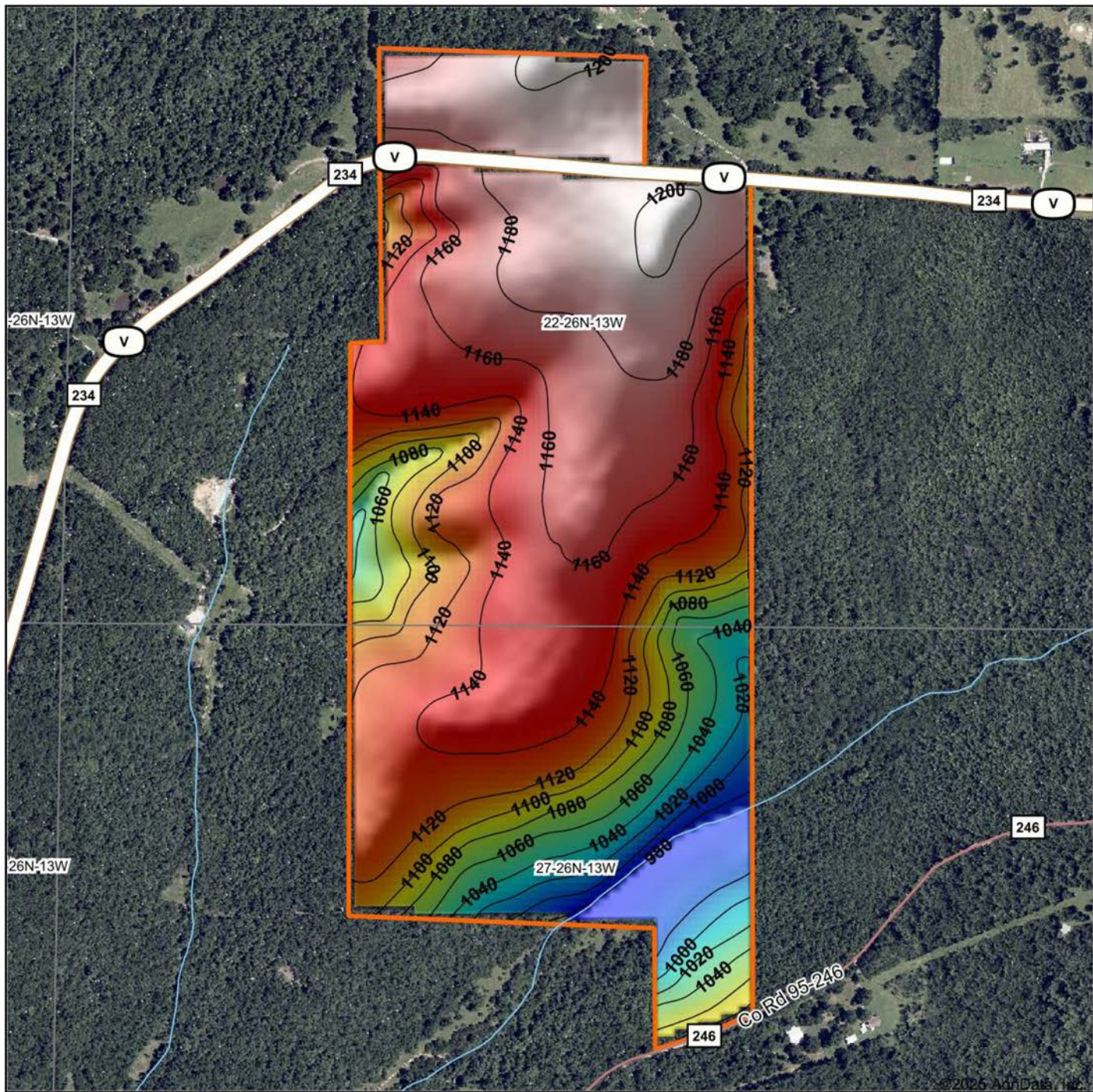
0ft 1797ft 3594ft

22-26N-13W
Douglas County
Missouri



10/20/2025

HILLSHADE MAP



Maps Provided By:



© AgriData, Inc. 2023

www.AgriDataInc.com

Source: USGS 10 meter dem

Interval(ft): 20

Min: 958.9

Max: 1,192.0

Range: 233.1

Average: 1,116.2

Standard Deviation: 57.74 ft

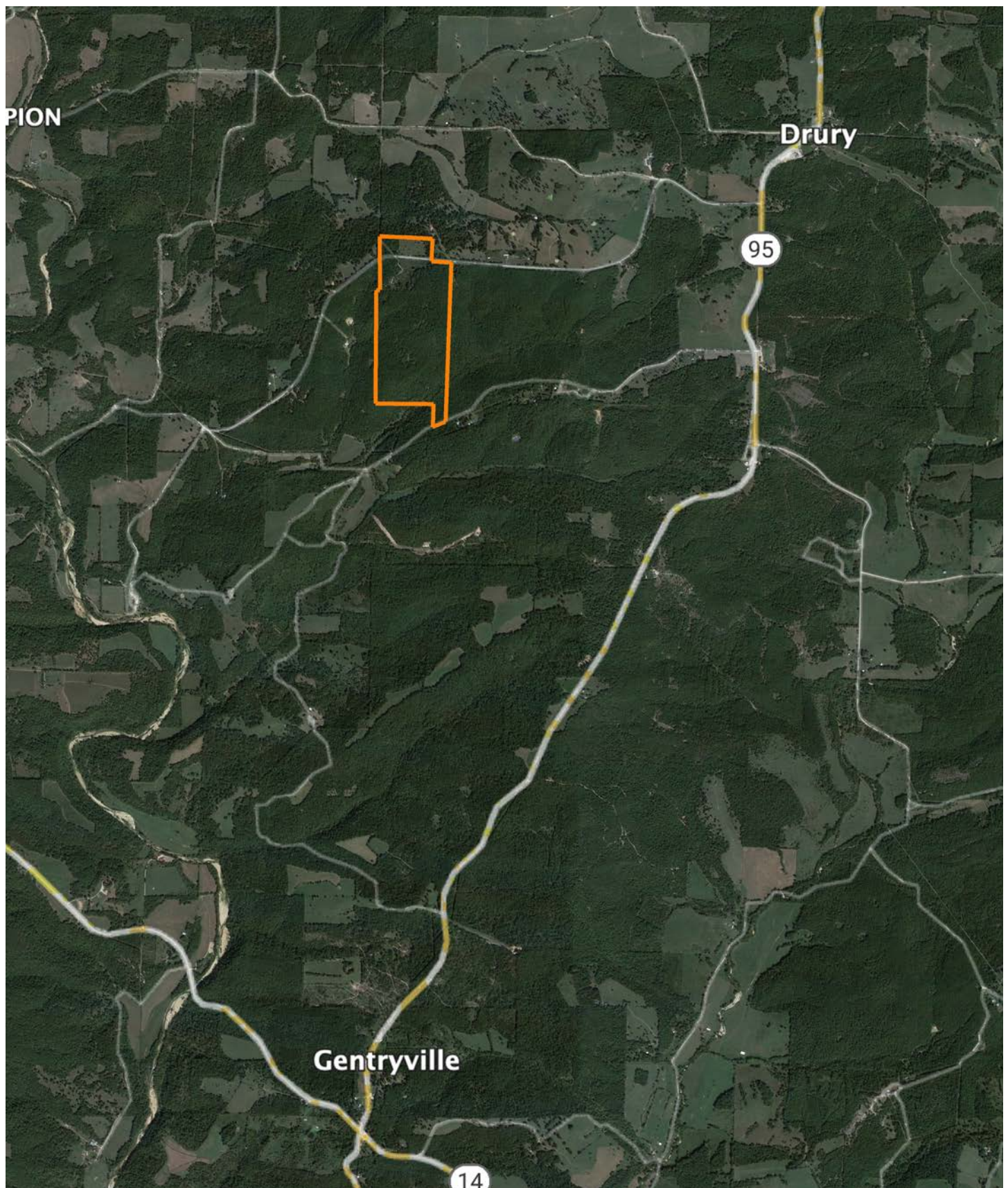


10/20/2025

22-26N-13W
Douglas County
Missouri

Boundary Center: 36° 55' 1.06, -92° 21' 22.38

OVERVIEW MAP



AGENT CONTACT

Looking for land or selling a piece of property can be stressful or overbearing, but not if you're working with the right agent. Bjorn Wilkerson is all about making sure each client has an enjoyable experience from start to finish. A lifelong lover of the outdoors, Bjorn has a background in agriculture and a passion for all things outdoors. This includes hunting, fishing, camping, traveling, hiking, and land management, not to mention his personal favorites: spring turkey hunting, whitetail hunting, and bowfishing. Born in West Plains, Missouri, Bjorn attended Couch High School and graduated from Missouri State University—Springfield with a degree in Wildlife Management. Before coming to Midwest Land Group, he worked in agriculture and operations with Archer Daniels Midland (ADM), a human and animal nutrition company specializing in agricultural origination and processing, where he worked his way around the company, serving in a variety of positions, everything from trainee, plant manager, and recruiter to new manager development specialist and continuous improvement practitioner. Being a service to someone looking for hunting or farming property is what drives Bjorn. He wants each experience to not only be enjoyable, but seamless as well. If you're in the market to sell or buy land, give Bjorn a call.



BJORN WILKERSON,
LAND AGENT

417.233.1243

BWilkerson@MidwestLandGroup.com



MidwestLandGroup.com

This property is being offered by Midwest Land Group, LLC. 913.674.8010. All information provided by Midwest Land Group, LLC or their agents was acquired from sources deemed accurate and reliable, however we do not warrant its accuracy or completeness. Midwest Land Group, LLC assumes no liability for error, omission or investment results. Midwest Land Group, LLC. Licensed in Alabama, Arkansas, Illinois, Indiana, Iowa, Kansas, Kentucky, Louisiana, Minnesota, Mississippi, Missouri, Montana, Nebraska, Ohio, Oklahoma, South Dakota, Tennessee, Texas, Wisconsin, and Wyoming.