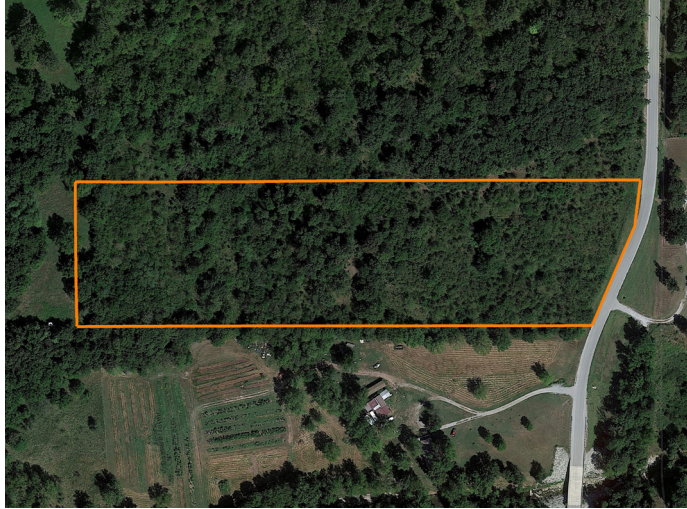


LAND FOR SALE

AFFORDABLE DELAWARE COUNTY BUILD SITE MINUTES FROM HORSE CREEK AT BERNICE



PROPERTY FEATURES

- Blacktop frontage
- Solid timber
- Partial perimeter fencing
- Utilities available along South 520 Road
- 3 1/2 miles to Bernice
- 13 miles to Vinita, Oklahoma
- 17 miles to Grove, Oklahoma
- 47 miles to Joplin, Missouri
- 78 miles to Tulsa, Oklahoma
- Property to be surveyed before the close of escrow



For more information, contact:

KEVIN WILLIAMS, Land Agent

918.514.3165 | KWilliams@MidwestLandGroup.com

MidwestLandGroup.com BUYERS, SELLERS, AND LAND – CONNECTED



PRICE: **\$55,000**

COUNTY: **DELAWARE**

STATE: **OKLAHOMA**

ACRES: **10**

