

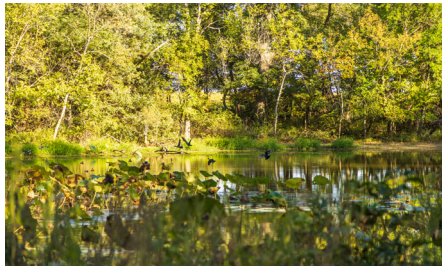
LAND FOR SALE

RECREATIONAL & INCOME-PRODUCING PROPERTY - COFFEY COUNTY, KANSAS



PROPERTY FEATURES

- Excellent mix of outdoor recreation and farming income
- Big Kansas whitetail deer genetics with proven hunting potential
- Large flock of wild turkey frequent the property
- Nice pond that consistently holds ducks in a strong flyway
- Close proximity to the Neosho River
- Approximately 60 tillable acres that are currently in soybeans



PRICE: **\$498,400**

COUNTY: **COFFEY**

STATE: **KANSAS**

ACRES: **89**



For more information, contact:

DONNIE THOMAS, Land Agent

913.396.6245 | DThomas@MidwestLandGroup.com

MidwestLandGroup.com

BUYERS, SELLERS, AND LAND – CONNECTED

This property is being offered by Midwest Land Group, LLC, 7111 W. 151st Street, Ste. 27, Overland Park, KS 66223, 913.674.8010.
Licensed in AL, AR, IL, IN, IA, KS, KY, LA, MN, MS, MO, MT, NE, OH, OK, SD, TN, TX, WI, and WY.