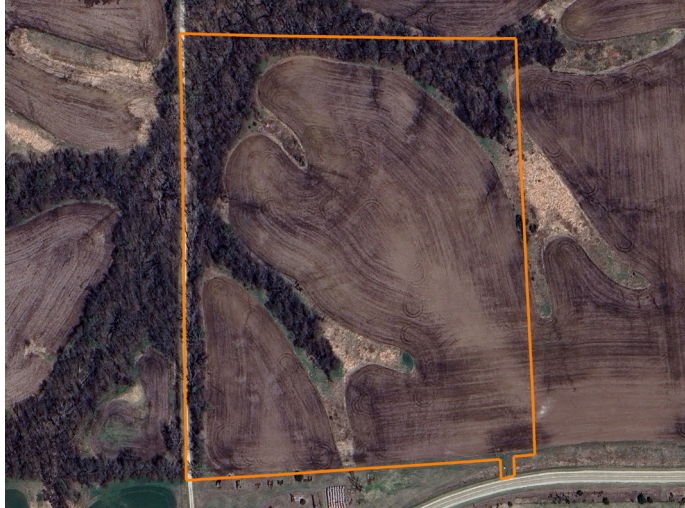


# LAND FOR SALE

## PRIME ACREAGE ON BLACKTOP WITH PANORAMIC VIEWS



### PROPERTY FEATURES

- West access from a gravel dead-end road
- Rural water and electricity at the road
- Gorgeous views from the potential building site
- Peaceful and private
- Deer, turkey, and pheasants
- No HOAs or covenants
- Income potential from tillable ground
- 2026 cash rent agreement with tenant
- Trail camera pictures are from this season



COUNTY: **CLARKE**

STATE: **IOWA**

ACRES: **23**



For more information, contact:

**DENNIS WILLIAMS**, Land Agent

**515.739.3053** | [DWilliams@MidwestLandGroup.com](mailto:DWilliams@MidwestLandGroup.com)

**MidwestLandGroup.com** BUYERS, SELLERS, AND LAND – CONNECTED

This property is being offered by Midwest Land Group, LLC, 7111 W. 151st Street, Ste. 27, Overland Park, KS 66223, 913.674.8010.  
Licensed in AL, AR, IA, IL, IN, KS, KY, LA, MN, MO, MS, MT, NE, OH, OK, SD, TN, TX, WI, and WY.