

LAND FOR SALE

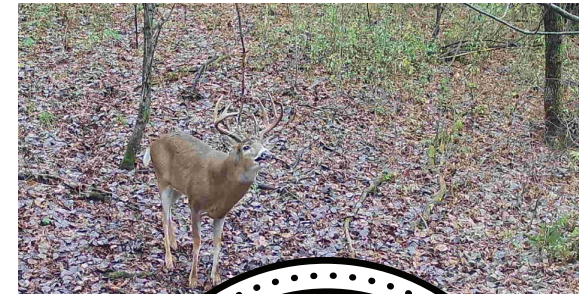
DIVERSE ACREAGE LOCATED IN THE TOWN OF HOWARD

PRICE: **\$269,000**
COUNTY: **CHIPPEWA**
STATE: **WISCONSIN**
ACRES: **24**



PROPERTY FEATURES

- Mature timber
- High-quality ground
- Incredible views
- Elk Creek Fishery is close proximity
- CSM to be completed
- Tranquil location
- Quick access to Highway 29
- Paved road
- 10 miles to Eau Claire
- 11 miles to Chippewa Falls



For more information, contact:

ANDREW SELSETH, Land Agent

715.841.9691 | ASelseth@MidwestLandGroup.com

MidwestLandGroup.com

This property is being offered by Midwest Land Group, LLC, 7111 W. 151st Street, Ste. 27, Overland Park, KS 66223, 913.674.8010.
Licensed in AL, AR, IL, IN, IA, KS, KY, LA, MN, MS, MO, MT, NE, OH, OK, SD, TN, TX, WI, and WY.

