

MIDWEST LAND GROUP PRESENTS

80 ACRES
CASS COUNTY, MO

29101 E STATE ROUTE P, PLEASANT HILL, MISSOURI, 64080



MidwestLandGroup.com

MIDWEST LAND GROUP IS HONORED TO PRESENT

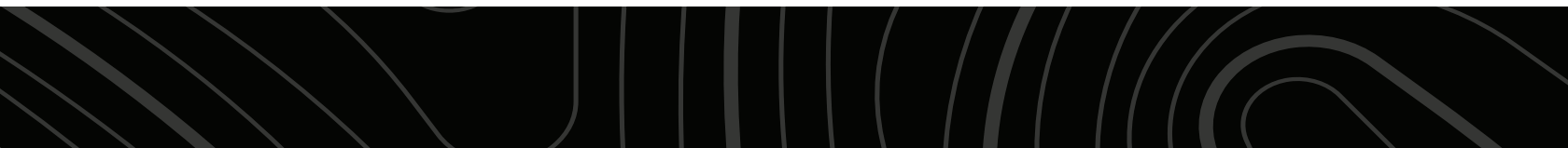
AMAZING 80 +/- ACRE LANDSCAPE TO BUILD, FARM, HUNT, & PLAY IN PLEASANT HILL, MISSOURI

This 80 +/- acre property is a must-see in Cass County, Missouri! It is conveniently located on P Highway just south of Pleasant Hill, Missouri. Talk about a great location!

Whether you are looking to develop, build, farm, or recreational fun, this property covers it all! Rural water and electricity run along the road frontage, making this a great build site or investment opportunity. The land lays out beautifully, and the topography is gently rolling. A couple of tree lines with wet-weather creek arms split

up the tillable acreage and offer privacy and seclusion. The tillable fields are terraced, and approximately 64 acres are currently planted in lush soybeans. If hunting is up your alley, don't overlook this farm. The block of timber in the southeast corner and the hidden fields set up great for deer and turkey hunting opportunities.

Properties of this size and makeup within close proximity to Kansas City are super hard to come by. Contact Skyler Wirsig at (816) 500-0168 for more information or to schedule a showing.



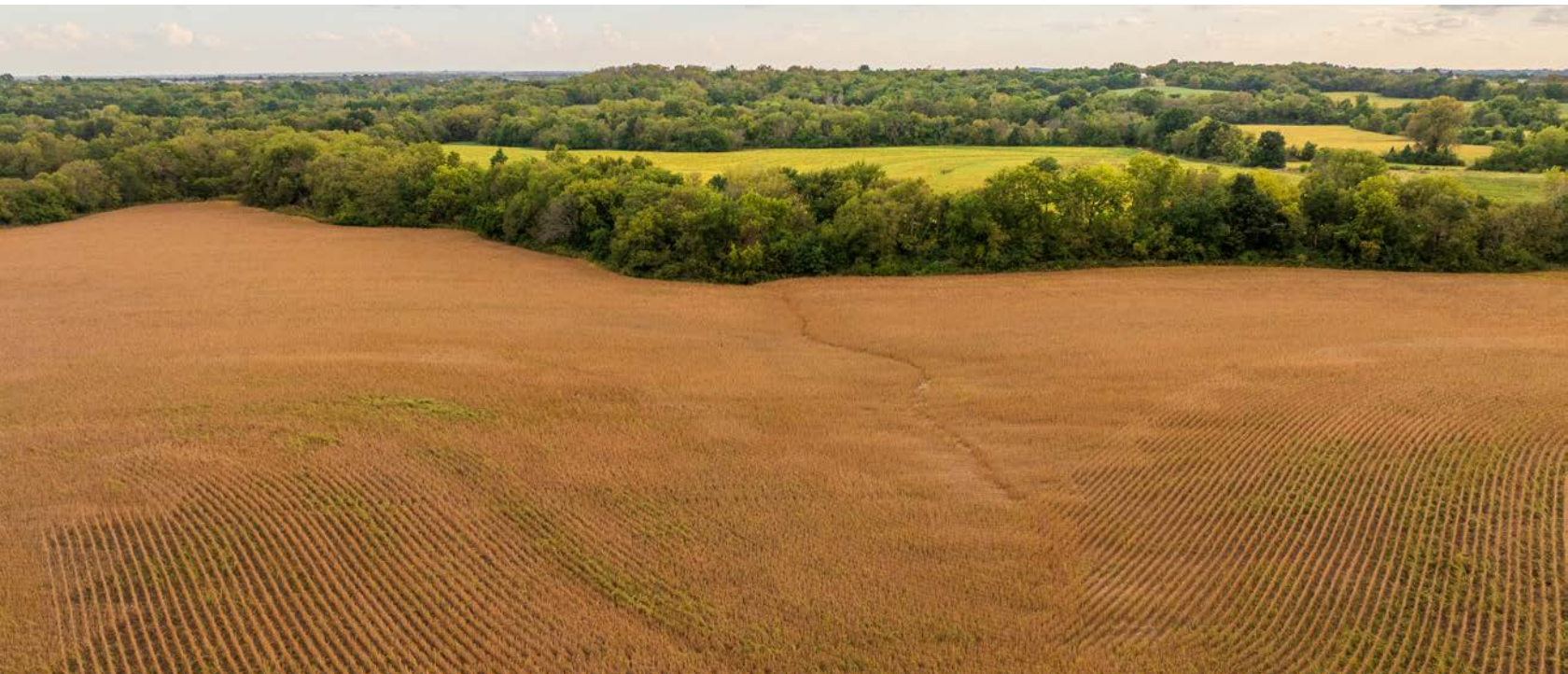
PROPERTY FEATURES

PRICE: **\$1,000,000** | COUNTY: **CASS** | STATE: **MISSOURI** | ACRES: **80**

- P Highway road frontage
- Electricity and rural water along the road
- Build site(s) opportunities
- 64 +/- acres tillable
- NCCPI avg 68.2 soil rating
- Mature timber block
- Wooded creek drainages
- Secluded hidden fields
- Deer and turkey hunting
- 5 miles to Pleasant Hill
- Pleasant Hill School District
- 1 hour to Kansas City Airport



64 +/- ACRES TILLABLE



P HIGHWAY ROAD FRONTAGE



BUILD SITE(S) OPPORTUNITIES



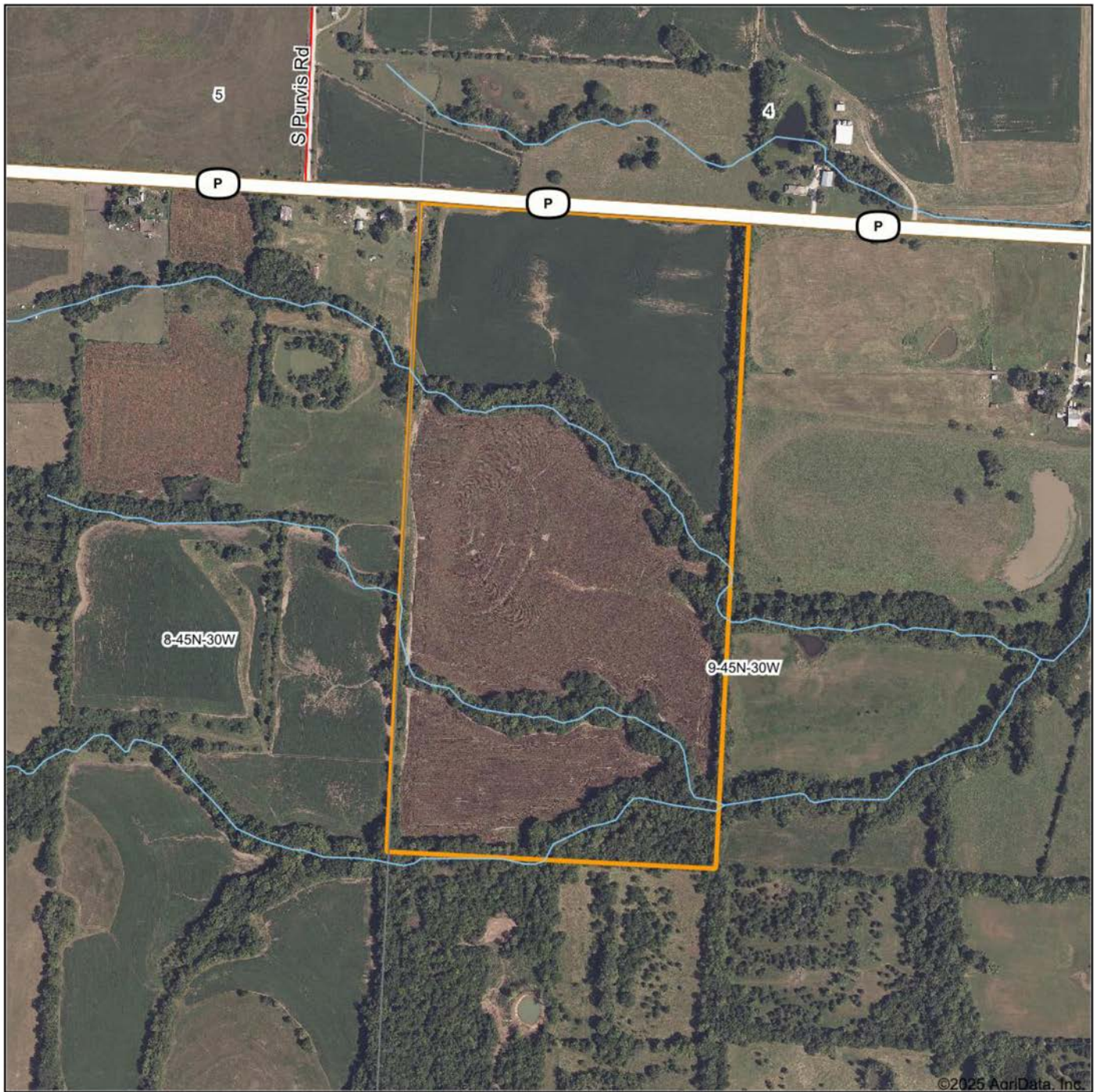
MATURE TIMBER BLOCK



ADDITIONAL PHOTOS



AERIAL MAP



Boundary Center: 38° 43' 44, -94° 15' 13.61

0ft 625ft 1249ft



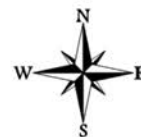
Maps Provided By:



© AgriData, Inc. 2023

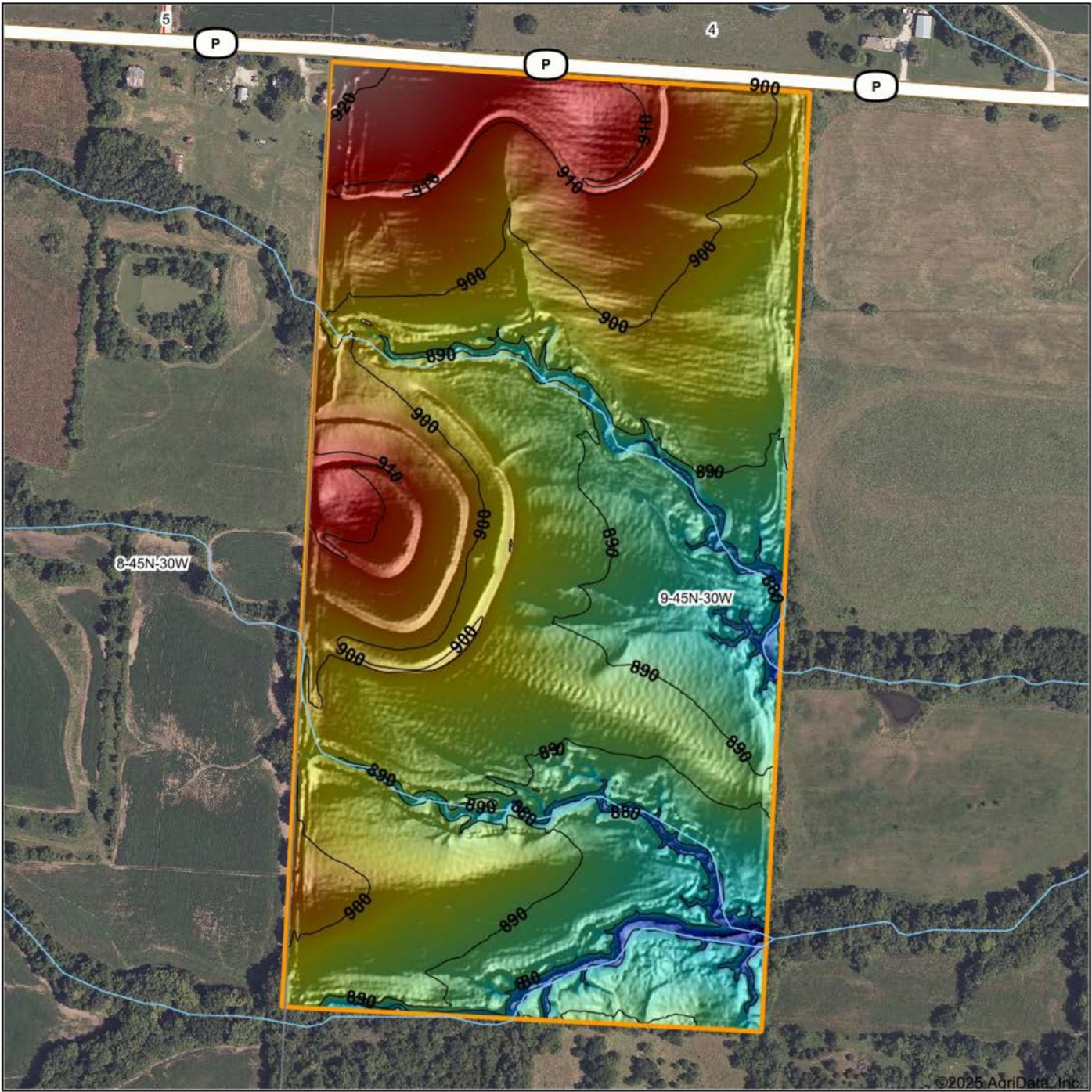
www.AgriDataInc.com

9-45N-30W
Cass County
Missouri



9/11/2025

HILLSHADE MAP



Low Elevation High



Maps Provided By:

surety
CUSTOMIZED ONLINE MAPPING
© AgriData, Inc. 2023 www.AgriDataInc.com

Source: USGS 1 meter dem
Interval(ft): 10
Min: 868.6
Max: 925.8
Range: 57.2
Average: 896.0
Standard Deviation: 8.92 ft

0ft 429ft 858ft

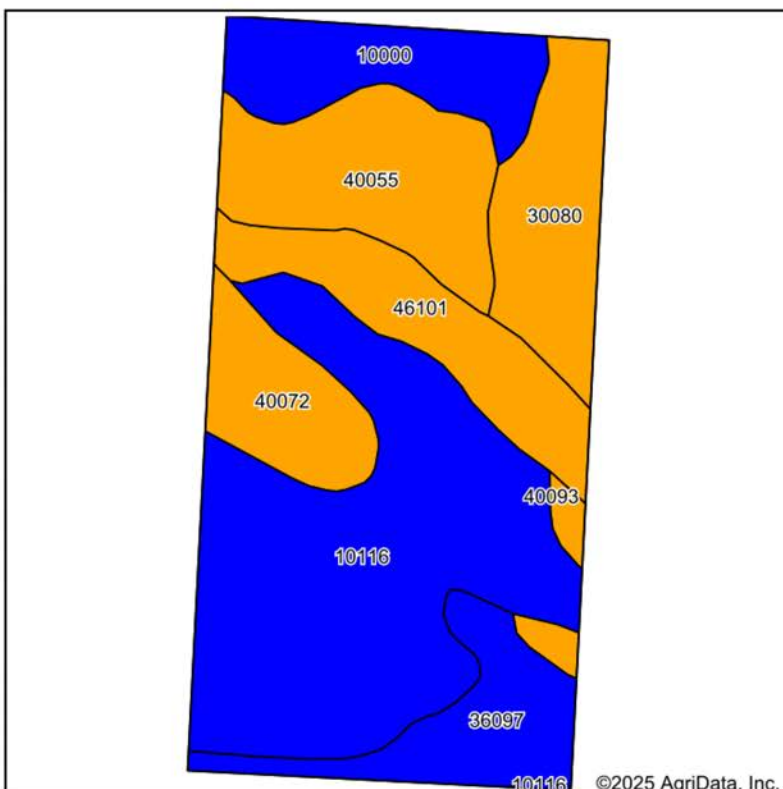


9/11/2025

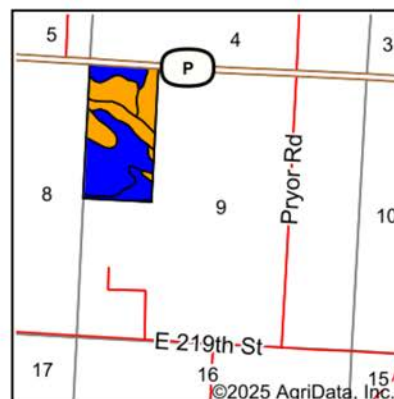
9-45N-30W
Cass County
Missouri

Boundary Center: 38° 43' 44, -94° 15' 13.61

SOILS MAP



Soils data provided by USDA and NRCS.



State: **Missouri**
 County: **Cass**
 Location: **9-45N-30W**
 Township: **Pleasant Hill**
 Acres: **79.35**
 Date: **9/11/2025**



Maps Provided By:

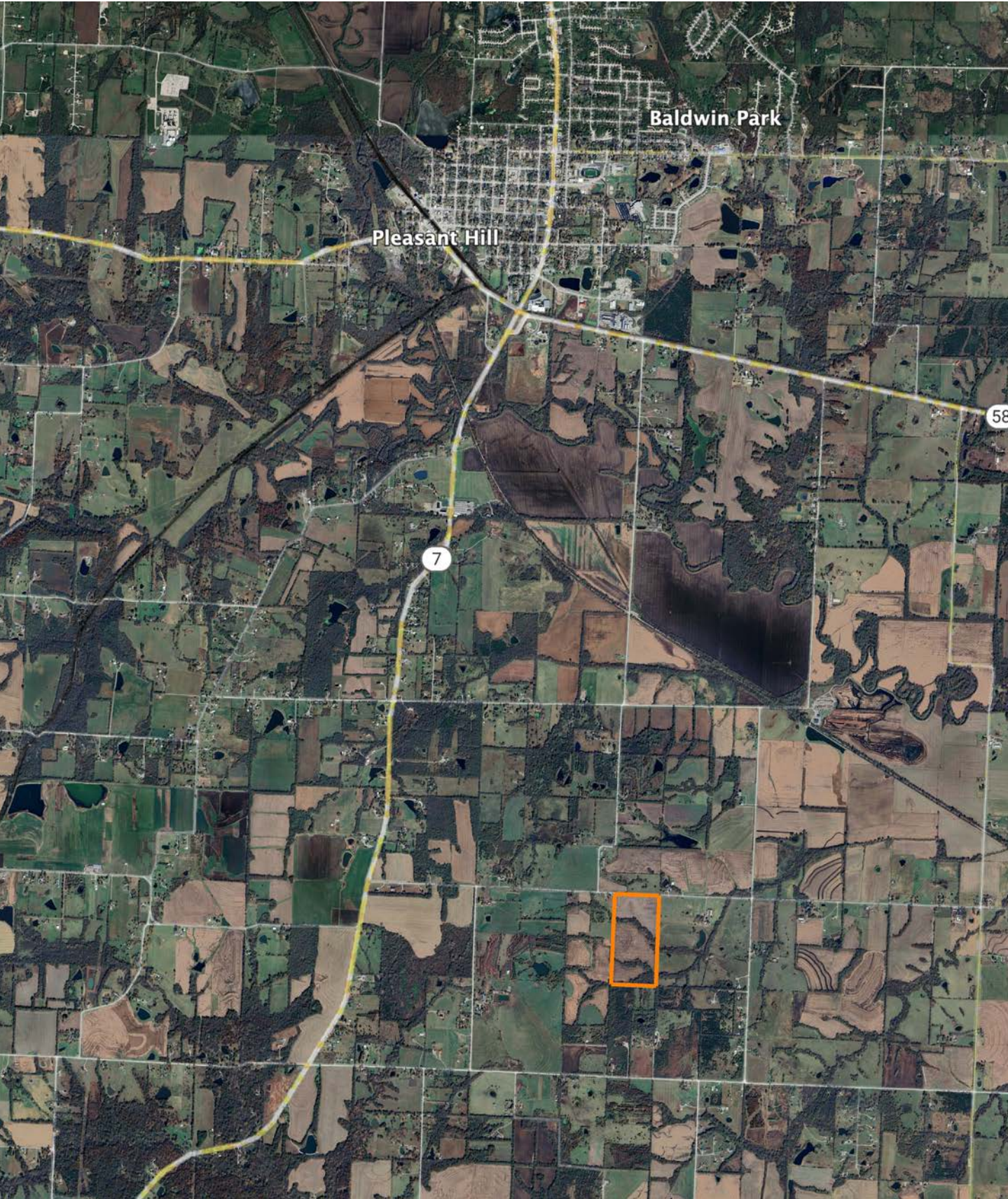


Area Symbol: MO037, Soil Area Version: 28

Code	Soil Description	Acres	Percent of field	Non-Irr Class Legend	Restrictive Layer	Non-Irr Class *c	Range Production (lbs/acre/yr)	*n NCCPI Overall	*n NCCPI Corn	*n NCCPI Small Grains	*n NCCPI Soybeans	*n NCCPI Cotton
10116	Sampsel silty clay loam, 2 to 5 percent slopes	30.26	38.1%		> 6.5ft.	Ile		0	59	59	50	49
40055	Deepwater silt loam, 5 to 9 percent slopes	10.70	13.5%		> 6.5ft.	IIle		0	83	82	72	79
46101	Verdigris silt loam, 1 to 3 percent slopes, frequently flooded	8.42	10.6%		> 6.5ft.	IIlw		0	78	77	64	66
30080	Greenton silty clay loam, 5 to 9 percent slopes	8.19	10.3%		> 6.5ft.	IIle		0	53	45	50	52
10000	Arisburg silt loam, 1 to 5 percent slopes	7.50	9.5%		> 6.5ft.	Ile		0	81	81	63	65
36097	Zook silty clay loam, 1 to 4 percent slopes, occasionally flooded	7.12	9.0%		> 6.5ft.	IIlw		0	85	84	64	57
40072	Kenoma silt loam, 1 to 3 percent slopes	5.94	7.5%		5.7ft. (Lithic bedrock)	IIle	3888	59	56	58	59	54
40093	Summit silty clay loam, 5 to 9 percent slopes	1.22	1.5%		> 6.5ft.	IIle		0	70	65	58	60

Soils data provided by USDA and NRCS.

OVERVIEW MAP



AGENT CONTACT

Skyler Wirsig is a seasoned steward of the land with a firm focus on developing and managing agricultural properties. Over 15 years, he has gained invaluable experience filming and hunting for the Outdoor Channel's Heartland Bowhunter, which has earned several accolades under his watch.

Hailing from Kansas City, Missouri, Skyler graduated from William Jewell College with degrees in Business Administration and Critical Thought & Inquiry. His previous role as an operations manager, handling sales and customer relationships across 20 countries, enhances his effectiveness as a real estate agent.

A dedicated sportsman, Skyler proudly holds the Archery Missouri State Record for an 8-point whitetail. Despite his professional accomplishments, he remains approachable, enjoying fishing, sports, and travel with his family. Skyler also volunteers for the Wounded Warriors in Action Foundation. Residing on his farm in Grain Valley, Missouri, with his wife and sons, Skyler brings a wealth of expertise and a down-to-earth attitude to land sales in the Midwest.



SKYLER WIRSIG

LAND AGENT

816.500.0168

SWirsig@MidwestLandGroup.com



MidwestLandGroup.com

This property is being offered by Midwest Land Group, LLC. 913.674.8010. All information provided by Midwest Land Group, LLC or their agents was acquired from sources deemed accurate and reliable, however we do not warrant its accuracy or completeness. Midwest Land Group, LLC assumes no liability for error, omission or investment results. Midwest Land Group, LLC. Licensed in Alabama, Arkansas, Illinois, Indiana, Iowa, Kansas, Kentucky, Louisiana, Minnesota, Mississippi, Missouri, Montana, Nebraska, Ohio, Oklahoma, South Dakota, Tennessee, Texas, Wisconsin, and Wyoming.