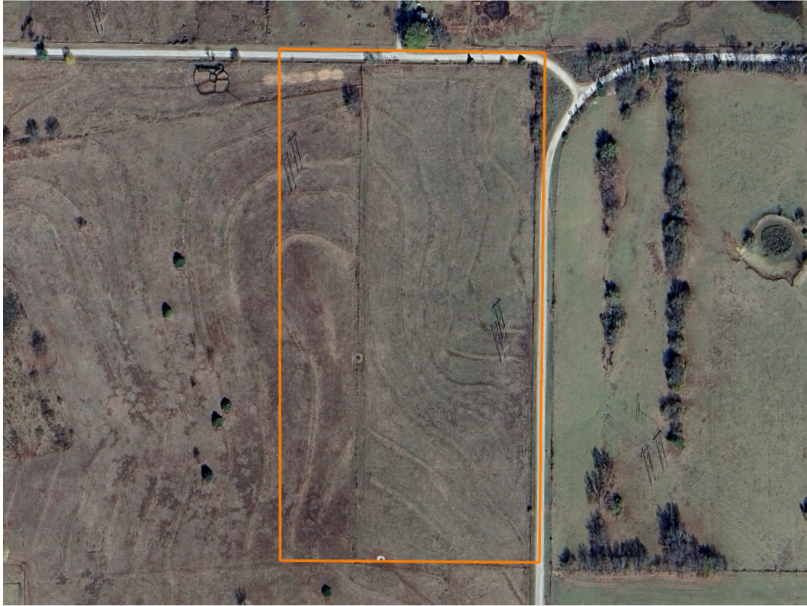


LAND FOR SALE

# LARGE ACREAGE HOMESITES IN ARCHIE SCHOOLS - TRACT 4

PRICE: **\$209,300**  
COUNTY: **CASS**  
STATE: **MISSOURI**  
ACRES: **21**



## PROPERTY FEATURES

- Southern Cass County
- Beautiful views
- Mostly open
- Gently-rolling topography
- Homesites
- Corner tract
- Elevated homesite
- Extensive road frontage
- Water at the road
- Power at the road
- Fenced along road
- Archie Schools
- 35 minutes from KC Metro

For more information, contact:

**BEN EWBANK**, Land Broker

**816.820.2345** | [BEwbank@MidwestLandGroup.com](mailto:BEwbank@MidwestLandGroup.com)

**MidwestLandGroup.com**

This property is being offered by Midwest Land Group, LLC, 7111 W. 151st Street, Ste. 27, Overland Park, KS 66223, 913.674.8010.  
Licensed in AL, AR, IL, IN, IA, KS, KY, LA, MN, MS, MO, MT, NE, OH, OK, SD, TN, TX, WI, and WY.

