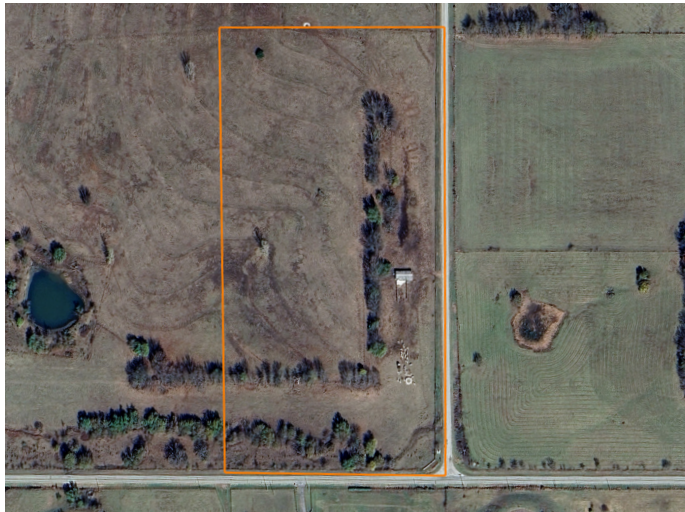


# LAND FOR SALE

## LARGE ACREAGE HOMESITES IN ARCHIE SCHOOLS - TRACT 6



### PROPERTY FEATURES

- Beautiful views
- Mostly open
- Gently-rolling topography
- Homesites
- Highway frontage
- Corner tract
- Partially treed
- Water meter
- Old barn
- Power at the road



For more information, contact:

**BEN EWBANK**, Land Broker

**816.820.2345** | [BEwbank@MidwestLandGroup.com](mailto:BEwbank@MidwestLandGroup.com)

**MidwestLandGroup.com**

BUYERS, SELLERS, AND LAND – CONNECTED

This property is being offered by Midwest Land Group, LLC, 7111 W. 151st Street, Ste. 27, Overland Park, KS 66223, 913.674.8010.  
Licensed in AL, AR, IA, IL, IN, KS, KY, LA, MN, MO, MS, MT, NE, OH, OK, SD, TN, TX, WI, and WY.



COUNTY: **CASS**

STATE: **MISSOURI**

ACRES: **20**

