

MIDWEST LAND GROUP PRESENTS

80 ACRES IN

---

# BENTON COUNTY MISSOURI



[MidwestLandGroup.com](http://MidwestLandGroup.com)



MIDWEST LAND GROUP IS HONORED TO PRESENT

# 80 ACRE SECLUDED DEER AND TURKEY HUNTING HEAVEN - NEAR LAKE OF THE OZARKS

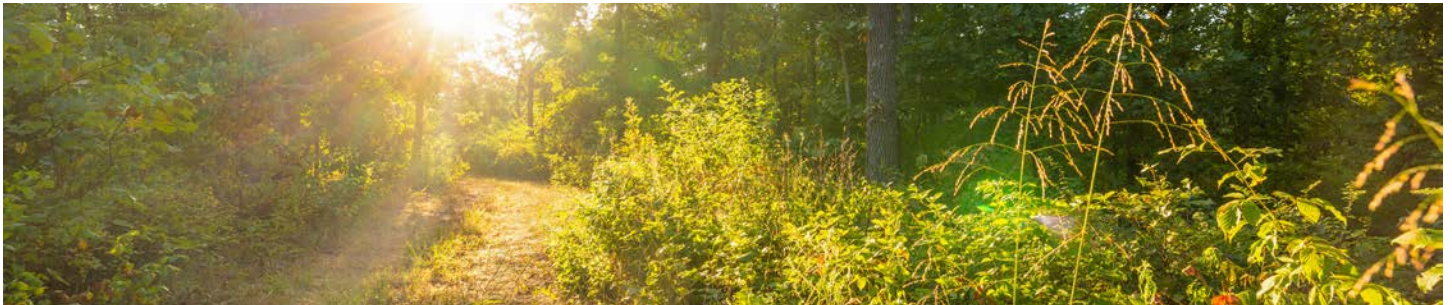
---

This 80 +/- acre property is an absolute gem! This is the place if you are looking for privacy and seclusion with great hunting! It is conveniently located super close to the Lake of the Ozarks and under 20 minutes from Climax Springs and Edwards. Talk about a stellar location! If you already have a lake house and want a place to roam and hunt close by, this is it!

The property rests at the end of a mile-long easement road in the middle of deer and turkey hunting heaven. Disappear and enjoy the peace and quiet that this heavily wooded acreage has to offer. Navigate the woods on the established trail system that provides great access

throughout the land. The rolling ridges are awesome and feature a variety of mature oak timber. You will fall in love with the 5-acre food plot clearing with long-range visibility and shooting opportunities. It's over 400 yards long, and a wet-weather creek flows alongside it as well. The property is set up great for hunting with several stands and blinds already in place. There is plenty of room to spread out family and friends during deer and turkey hunt camp. Check out the big bucks and turkeys in the trail camera photos!

This property is set up and ready to enjoy from day one! Contact Skyler Wirsig at (816) 500-0168 for more information or to schedule a showing.



## PROPERTY FEATURES

PRICE: **\$250,000** | COUNTY: **BENTON** | STATE: **MISSOURI** | ACRES: **80**

---

- Heavily wooded
- Super secluded
- Variety of mature oak timber
- Great trail system
- Deer and turkey hunting
- Close to Lake of the Ozarks
- Under 20 minutes to Climax Springs
- Under 20 minutes to Edwards
- 1 hour 30 minutes to Springfield
- 2 hours to Columbia
- 2 hours to the Kansas City area



# HUNTING OPPORTUNITIES

---

Disappear and enjoy the peace and quiet that this heavily wooded acreage has to offer. The rolling ridges are awesome and feature a variety of mature oak timber. You will fall in love with the 5-acre food plot clearing with long-range visibility and shooting opportunities.





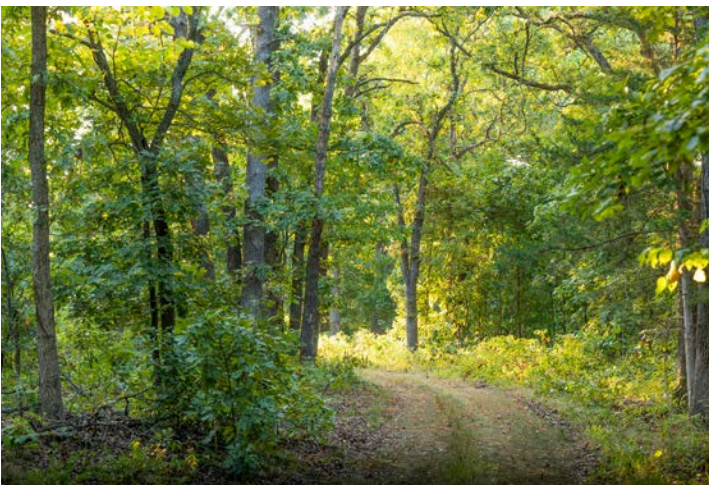
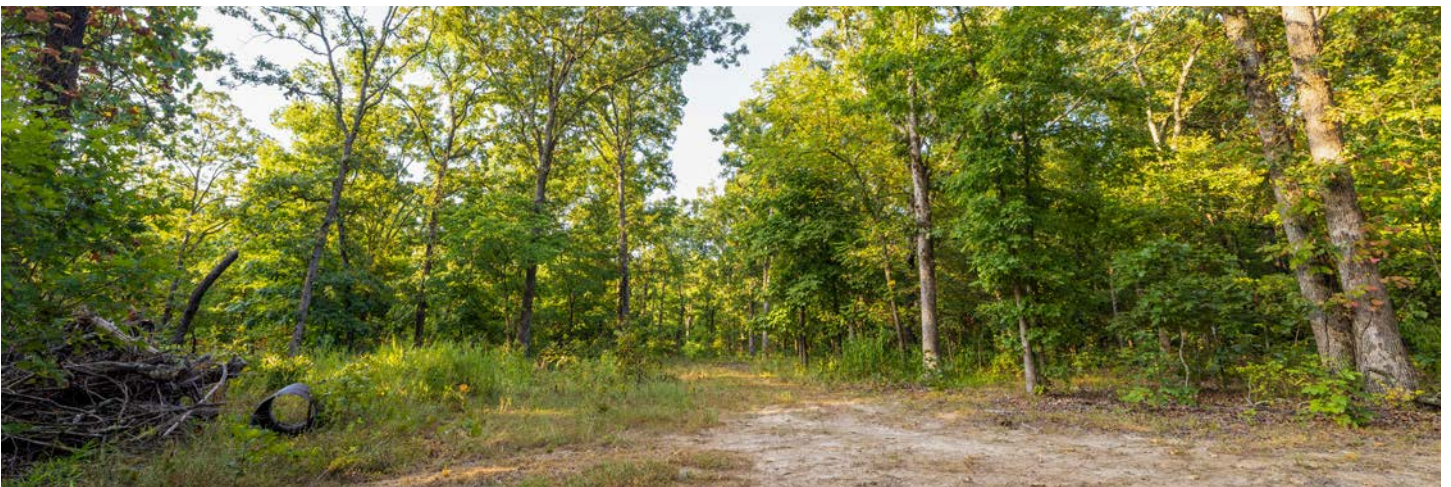
# VARIETY OF MATURE OAK TIMBER

---



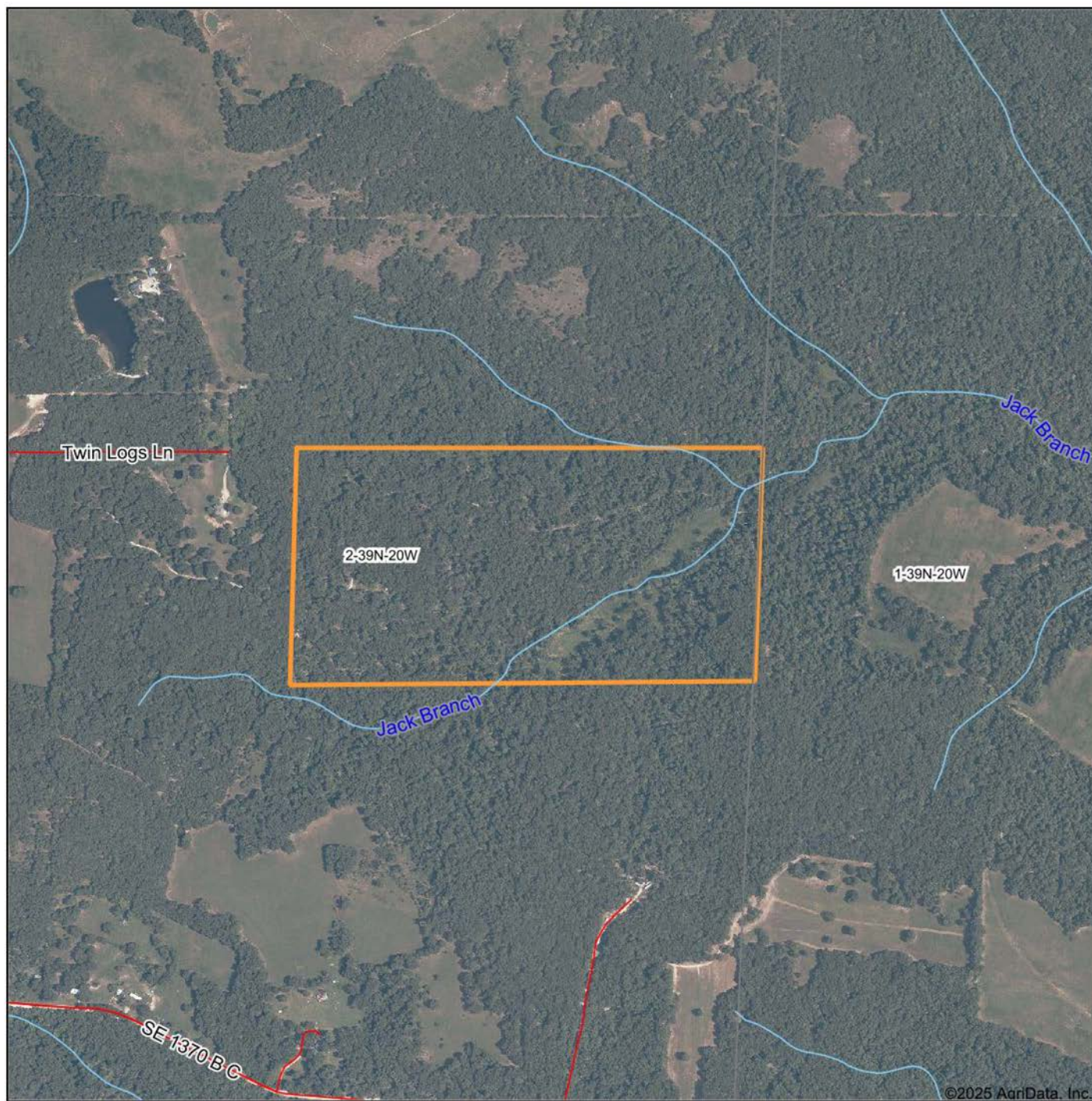
## TRAIL SYSTEM

---





# AERIAL MAP



Maps Provided By:



© AgriData, Inc. 2023 www.AgriDataInc.com

Boundary Center: 38° 9' 32.58, -93° 5' 0.91

0ft 880ft 1759ft

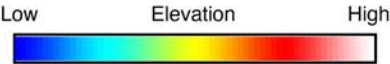
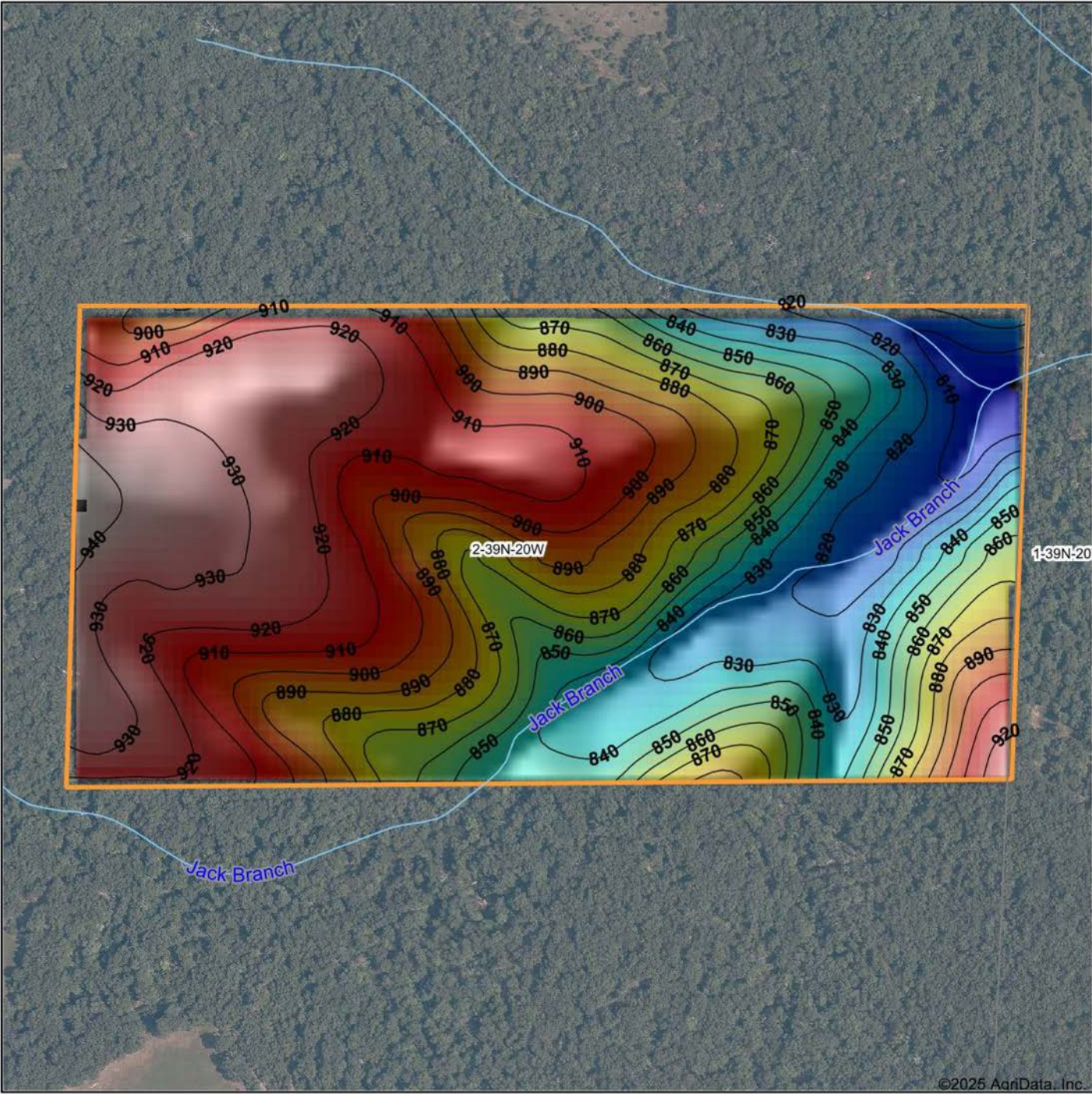
**2-39N-20W**  
**Benton County**  
**Missouri**



8/6/2025



# HILLSHADE MAP



Maps Provided By:



© AgriData, Inc. 2023

www.AgriDataInc.com

Source: USGS 10 meter dem  
Interval(ft): 10  
Min: 802.2  
Max: 945.3  
Range: 143.1  
Average: 880.2  
Standard Deviation: 38.39 ft



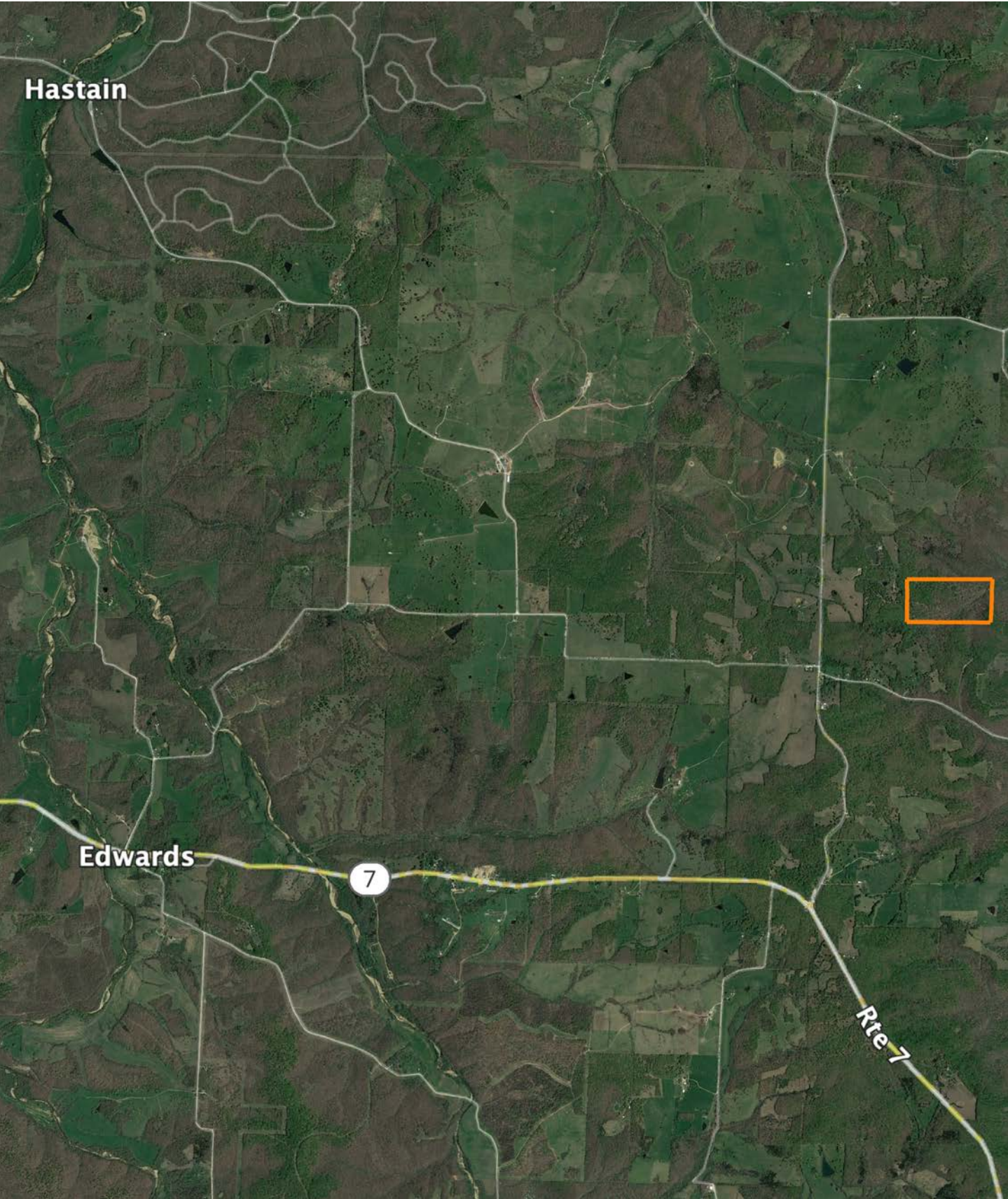
8/6/2025

**2-39N-20W**  
**Benton County**  
**Missouri**

Boundary Center: 38° 9' 32.58, -93° 5' 0.91



# OVERVIEW MAP





# AGENT CONTACT

---

Skyler Wirsig is a seasoned steward of the land with a firm focus on developing and managing agricultural properties. Over 15 years, he has gained invaluable experience filming and hunting for the Outdoor Channel's Heartland Bowhunter, which has earned several accolades under his watch.

Hailing from Kansas City, Missouri, Skyler graduated from William Jewell College with degrees in Business Administration and Critical Thought & Inquiry. His previous role as an operations manager, handling sales and customer relationships across 20 countries, enhances his effectiveness as a real estate agent.

A dedicated sportsman, Skyler proudly holds the Archery Missouri State Record for an 8-point whitetail. Despite his professional accomplishments, he remains approachable, enjoying fishing, sports, and travel with his family. Skyler also volunteers for the Wounded Warriors in Action Foundation. Residing on his farm in Grain Valley, Missouri, with his wife and sons, Skyler brings a wealth of expertise and a down-to-earth attitude to land sales in the Midwest.



**SKYLER WIRSIG**

LAND AGENT

**816.500.0168**

[SWirsig@MidwestLandGroup.com](mailto:SWirsig@MidwestLandGroup.com)



---

## MidwestLandGroup.com

This property is being offered by Midwest Land Group, LLC. 913.674.8010. All information provided by Midwest Land Group, LLC or their agents was acquired from sources deemed accurate and reliable, however we do not warrant its accuracy or completeness. Midwest Land Group, LLC assumes no liability for error, omission or investment results. Midwest Land Group, LLC. Licensed in Alabama, Arkansas, Illinois, Indiana, Iowa, Kansas, Kentucky, Louisiana, Minnesota, Mississippi, Missouri, Montana, Nebraska, Ohio, Oklahoma, South Dakota, Tennessee, Texas, Wisconsin, and Wyoming.