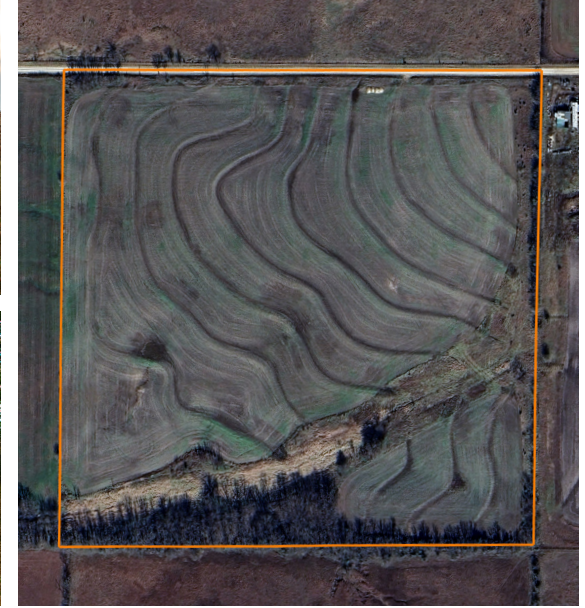


LAND FOR SALE

BEAUTIFUL BUILD SITE AND TILLABLE INVESTMENT

PRICE: **\$165,000**
COUNTY: **WABAUNSEE**
STATE: **KANSAS**
ACRES: **39.1**



PROPERTY FEATURES

- Approximately 32 acres of tillable land operated by a local tenant
- Tenant would continue to lease the property
- Terracing completed in 2023
- Secluded tillable section separated by a native waterway
- Walnut trees surround the hedge row
- Rolling terrain down to the timber
- Beautiful build sites allowing for a walkout basement
- Multiple pond locations
- Deer sign
- Ability to drill well
- Income-producing
- Previously surveyed into 4 approximately 10 +/- acre parcels

For more information, contact:

JOEY PURPURA, Land Agent

785.831.3045 | JPurpura@MidwestLandGroup.com

MidwestLandGroup.com

