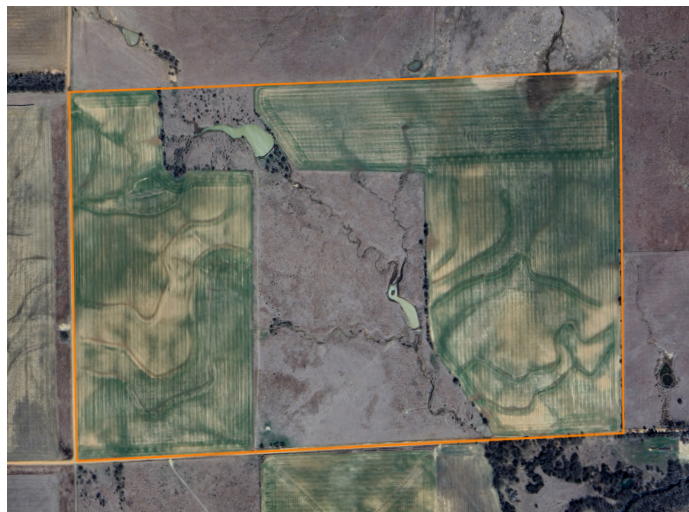


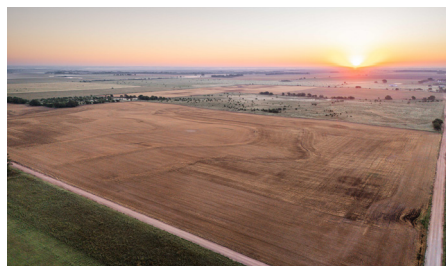
LAND FOR SALE

WELL-BALANCED KINGMAN COUNTY FARM



PROPERTY FEATURES

- 245.5 +/- acres
- 171 +/- acres tillable
- 74.5 +/- acres pasture
- 2 nice ponds
- Good grass conditions
- Terraces in good shape
- All Class II soil
- 64.3 NCCPI score
- 3.4 miles Norwich
- 12.5 miles Cheney



PRICE: **\$729,539**

COUNTY: **KINGMAN**

STATE: **KANSAS**

ACRES: **246**

For more information, contact:

TYLER HEIL, Land Agent

620.869.7083 | THeil@MidwestLandGroup.com

MidwestLandGroup.com BUYERS, SELLERS, AND LAND – CONNECTED

This property is being offered by Midwest Land Group, LLC, 7111 W. 151st Street, Ste. 27, Overland Park, KS 66223, 913.674.8010.
Licensed in AL, AR, IL, IN, IA, KS, KY, LA, MN, MS, MO, MT, NE, OH, OK, SD, TN, TX, WI, and WY.

