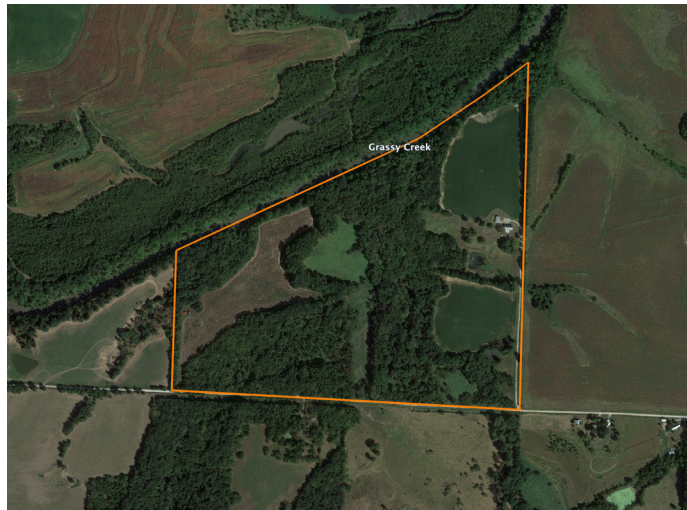


# LAND FOR SALE

## THE PERFECT 110



### PROPERTY FEATURES

- 40'x60' shop
- Concrete, electricity, and private well water
- Fishing pond and creeks
- Borders Blackwater River
- UTV trail system
- Mature hardwoods
- 23 +/- acres of tillable fields
- Amazing deer and turkey hunting
- 1 hour to Kansas City area
- 12 miles to Sweet Springs, MO



For more information, contact:

**SKYLER WIRSIG**, Land Agent

**816.500.0168** | [SWirsig@MidwestLandGroup.com](mailto:SWirsig@MidwestLandGroup.com)

**MidwestLandGroup.com**

BUYERS, SELLERS, AND LAND – CONNECTED

This property is being offered by Midwest Land Group, LLC, 7111 W. 151st Street, Ste. 27, Overland Park, KS 66223, 913.674.8010.  
Licensed in AL, AR, IL, IN, IA, KS, KY, LA, MN, MS, MO, MT, NE, OH, OK, SD, TN, TX, WI, and WY.



PRICE: **\$715,000**

COUNTY: **SALINE**

STATE: **MISSOURI**

ACRES: **110**

