

LAND FOR SALE

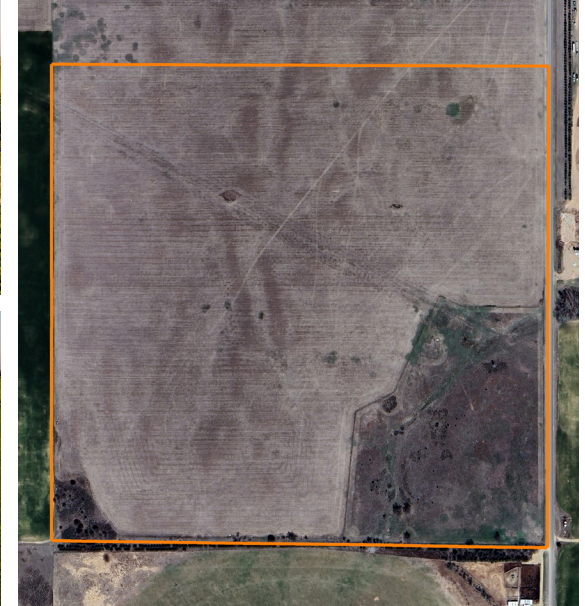
# PRATT COUNTY GRASSLAND DEVELOPMENT QUARTER

PRICE: **\$374,500**

COUNTY: **PRATT**

STATE: **KANSAS**

ACRES: **158**



## PROPERTY FEATURES

- 31 +/- acre pasture
- 100% mineral rights transfer
- 2024 taxes: \$1,227.95
- Horse quality hay
- Blacktop frontage
- Country build site
- Two water wells
- Nearby electricity
- Trophy deer and upland birds
- 2 miles south of Preston, KS
- 15 miles northeast of Pratt, KS
- 45 miles southwest of Hutchinson, KS
- 1.5 hours from Wichita, KS



For more information, contact:

**KAYANNA HEMMEKE**, Land Agent

**620.566.7889** | [KHammeke@MidwestLandGroup.com](mailto:KHammeke@MidwestLandGroup.com)

**MidwestLandGroup.com**



This property is being offered by Midwest Land Group, LLC, 7111 W. 151st Street, Ste. 27, Overland Park, KS 66223, 913.674.8010.  
Licensed in AL, AR, IL, IN, IA, KS, KY, LA, MN, MS, MO, MT, NE, OH, OK, SD, TN, TX, WI, and WY.