

LAND FOR SALE

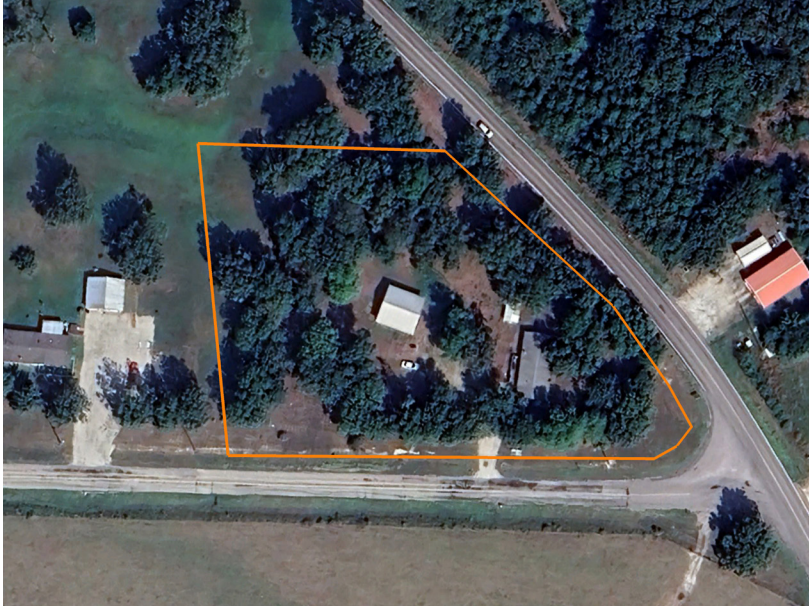
NEW CONSTRUCTION ON 2 +/- ACRES WITH SHOP NEAR HALFWAY, MISSOURI

PRICE: **\$300,000**

COUNTY: **POLK**

STATE: **MISSOURI**

ACRES: **2**



PROPERTY FEATURES

- New construction
- 3 bedroom, 2 bathroom
- Split floor plan
- 2-car garage
- Vaulted ceilings
- Open concept living area
- Existing shop
- Located off two state highways
- 2 acres - just surveyed
- Pear trees in the yard
- 15 minute from Bolivar
- 30 minutes from Springfield



For more information, contact:

AMBER MILLER, Land Agent

417.322.6995 | AMiller@MidwestLandGroup.com

MidwestLandGroup.com



This property is being offered by Midwest Land Group, LLC, 7111 W. 151st Street, Ste. 27, Overland Park, KS 66223, 913.674.8010.
Licensed in AL, AR, IL, IN, IA, KS, KY, LA, MN, MS, MO, MT, NE, OH, OK, SD, TN, TX, WI, and WY.