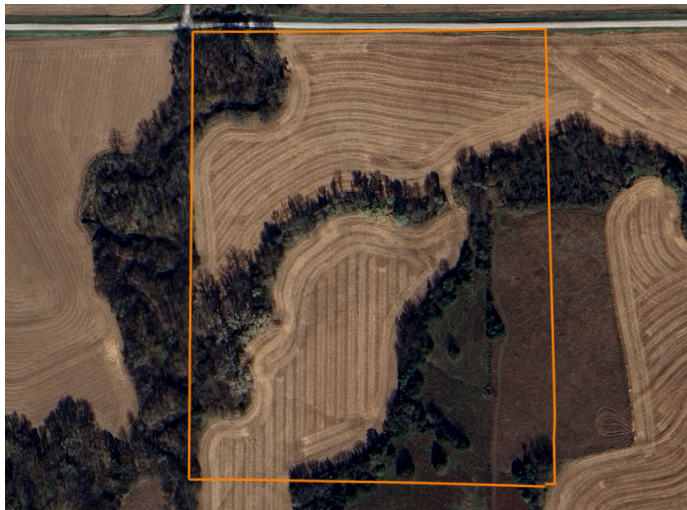


# LAND FOR SALE

## 29 +/- ACRE OTOE COUNTY BUILD SITE C



### PROPERTY FEATURES

- 18 minutes from southeast Lincoln
- 28 minutes to Nebraska City
- 13 minutes to Syracuse
- Peace and quiet
- Possibility for tillable income if desired
- No covenants
- Easy access to Highway 2
- Palmyra School District



PRICE: **\$348,000**

COUNTY: **OTOE**

STATE: **NEBRASKA**

ACRES: **29**

For more information, contact:

**NATE KEY**, Land Agent

**402.795.1029** | [NKey@MidwestLandGroup.com](mailto:NKey@MidwestLandGroup.com)

**MidwestLandGroup.com** BUYERS, SELLERS, AND LAND – CONNECTED

This property is being offered by Midwest Land Group, LLC, 7111 W. 151st Street, Ste. 27, Overland Park, KS 66223, 913.674.8010.  
Licensed in AL, AR, IL, IN, IA, KS, KY, LA, MN, MS, MO, MT, NE, OH, OK, SD, TN, TX, WI, and WY.

