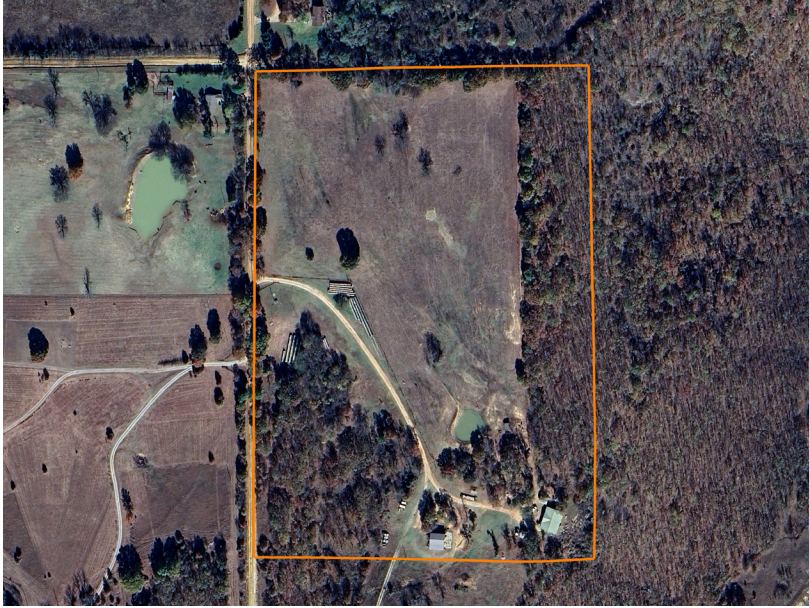


LAND FOR SALE

## ELEVATED LIVING: A MULTI-USE ESTATE WITH WORK-SHOP, LIVESTOCK FACILITIES AND PANORAMIC VIEWS

PRICE: **\$300,000**  
COUNTY: **OKFUSKEE**  
STATE: **OKLAHOMA**  
ACRES: **30**



### PROPERTY FEATURES

- 3 bedrooms, 2 bathrooms
- Additional dining/living area
- Bonus room/office
- 30'x40' shop with a concrete floor equipped with a 15-foot covered lean-to, also with a concrete floor
- Storage building with a chicken pen
- Livestock pens with shelter
- Mature whitetails and Turkey
- 1 ponds
- Approximately 50% timber and 50% open grassland



For more information, contact:

**MICHAEL GILL**, Land Agent

**918.399.9333** | [MGill@MidwestLandGroup.com](mailto:MGill@MidwestLandGroup.com)

**MidwestLandGroup.com**

This property is being offered by Midwest Land Group, LLC, 7111 W. 151st Street, Ste. 27, Overland Park, KS 66223, 913.674.8010. Licensed in AL, AR, IL, IN, IA, KS, KY, LA, MN, MS, MO, MT, NE, OH, OK, SD, TN, TX, WI, and WY.

