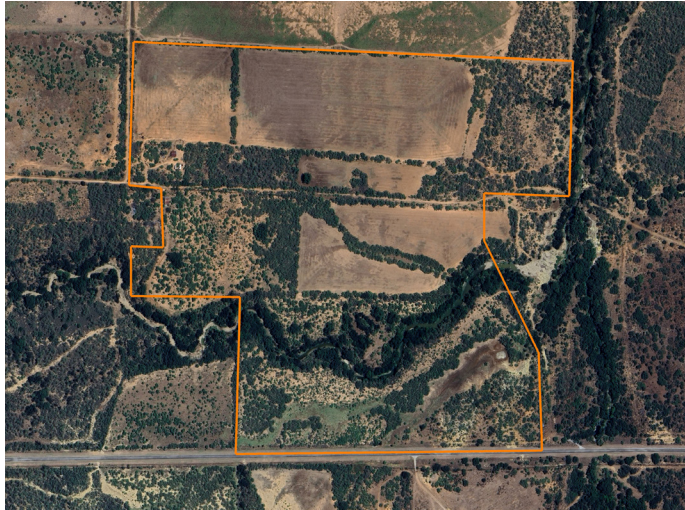


LAND FOR SALE

A MCCULLOCH COUNTY LEGACY



PROPERTY FEATURES

- Located 1-mile from the Colorado River
- Trophy deer management practiced on-site
- Plethora of wildlife including deer, turkey, doves, quail, hogs, and predators
- ¾ miles of Deep Creek water access
- Established road systems and trails for easy access and recreation
- 600 yards of road frontage and additional quality access to the property
- 43 +/- acres of sunflower covered fields and food plot potential



COUNTY: **MCCULLOCH**

STATE: **TEXAS**

ACRES: **125.4**

For more information, contact:

DEVON COWAN, Land Agent

512.609.0965 | DCowan@MidwestLandGroup.com

MidwestLandGroup.com BUYERS, SELLERS, AND LAND – CONNECTED

This property is being offered by Midwest Land Group, LLC, 7111 W. 151st Street, Ste. 27, Overland Park, KS 66223, 913.674.8010.
Licensed in AL, AR, IA, IL, IN, KS, KY, LA, MN, MO, MS, MT, NE, OH, OK, SD, TN, TX, WI, and WY.

