

MIDWEST LAND GROUP PRESENTS

312 ACRES IN

---

# LEFLORE COUNTY OKLAHOMA



[MidwestLandGroup.com](http://MidwestLandGroup.com)

MIDWEST LAND GROUP IS HONORED TO PRESENT

# ONCE-IN-A-LIFETIME HUNTING & RECREATIONAL RETREAT - 312 +/- ACRES WITH BARNDOMINIUM

---

Tucked away at 26971 School House Loop, Panama, Oklahoma, this 312 +/- acre property is the kind of place that rarely comes available - a true sportsman's paradise designed for making memories with family and friends. Just 3.8 miles west of Highway 59 on Buck Creek Road, then south on School House Loop, the property feels like a world away while still being easy to access.

The newly built 1,460 +/- square foot, fully furnished barndominium offers comfort and convenience after a long day outdoors, with 2 oversized bunk rooms, a spacious bathroom featuring a walk-in shower, and a utility room. The attached 3,000 +/- square foot shop with 22' ceilings and two 12' automatic bay doors provides plenty of room for storing side-by-sides, tractors, or hunting gear.

Out on the land, you'll find 8 ponds, fertile bottom fields that can be hayed, and a diverse mix of cover and open ground. Multiple blinds and stands are already in place, giving hunters prime setups for chasing big Oklahoma whitetails and large wild hogs. Whether it's early mornings in the stand, afternoons fishing the ponds, or evenings around a fire, this property is tailor-made for outdoor living.

A unique bonus is the active rock quarry with a transferable mining permit - an unexpected perk that offers future opportunity while not taking away from the recreational feel of the land. This is the type of place where stories are told, game is harvested, and families come together year after year.





# PROPERTY FEATURES

PRICE: **\$1,350,000** | COUNTY: **LeFLORE** | STATE: **OKLAHOMA** | ACRES: **312**

- 312 +/- acres - hunting & recreational retreat with barndominium
- 1,460 +/- sq. ft. barndominium with 2 oversized bedrooms & large walk-in shower
- 3,000 +/- sq. ft. shop with 22' ceilings & two 12' automatic bay doors
- 8 ponds, fertile bottom fields, and hay production potential
- Exceptional whitetail deer & wild hog hunting with blinds and stands in place
- Active rock quarry with transferable mining permit
- 2,000 +/- sq. ft. covered barn
- 20'x100' covered storage area
- 30'x40' covered storage with concrete floor
- Two large grain bins for feed storage





# 1,460 +/- SQ. FT. BARNDOMINIUM

---





## 3,000 +/- SQ. FT. SHOP

---





# FERTILE BOTTOM FIELDS

---



## 8 PONDS

---





# MULTIPLE BLINDS AND STANDS

---





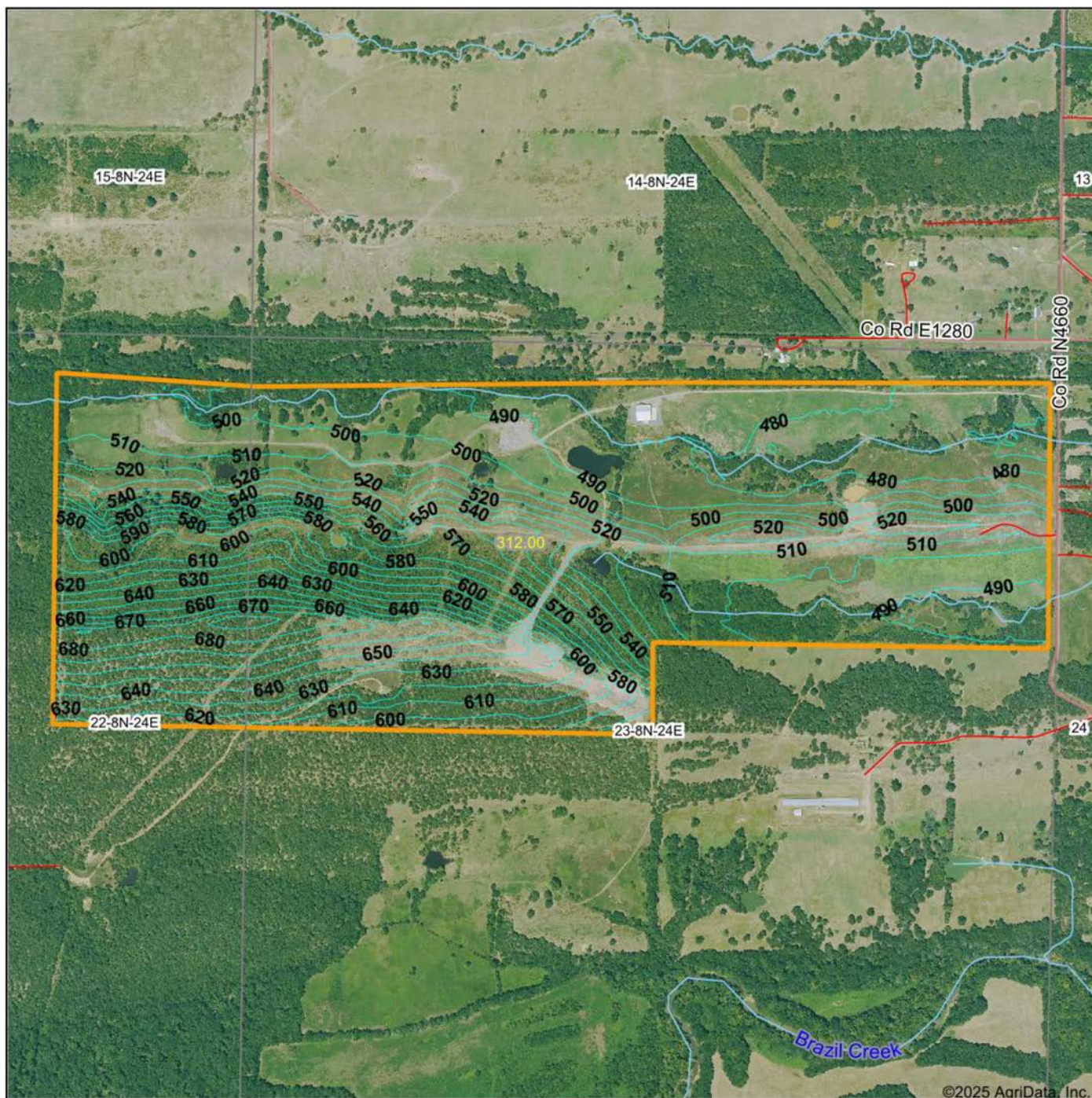
# TRAIL CAM PICTURES

---





# TOPOGRAPHY MAP



©2025 AgriData, Inc.



Maps Provided By:



© AgriData, Inc. 2023

www.AgrIDataInc.com

Source: USGS 10 meter dem

Interval(ft): 10.0

Min: 465.3

Max: 696.6

Range: 231.3

Average: 545.4

Standard Deviation: 64.27 ft

0ft 1029ft 2059ft



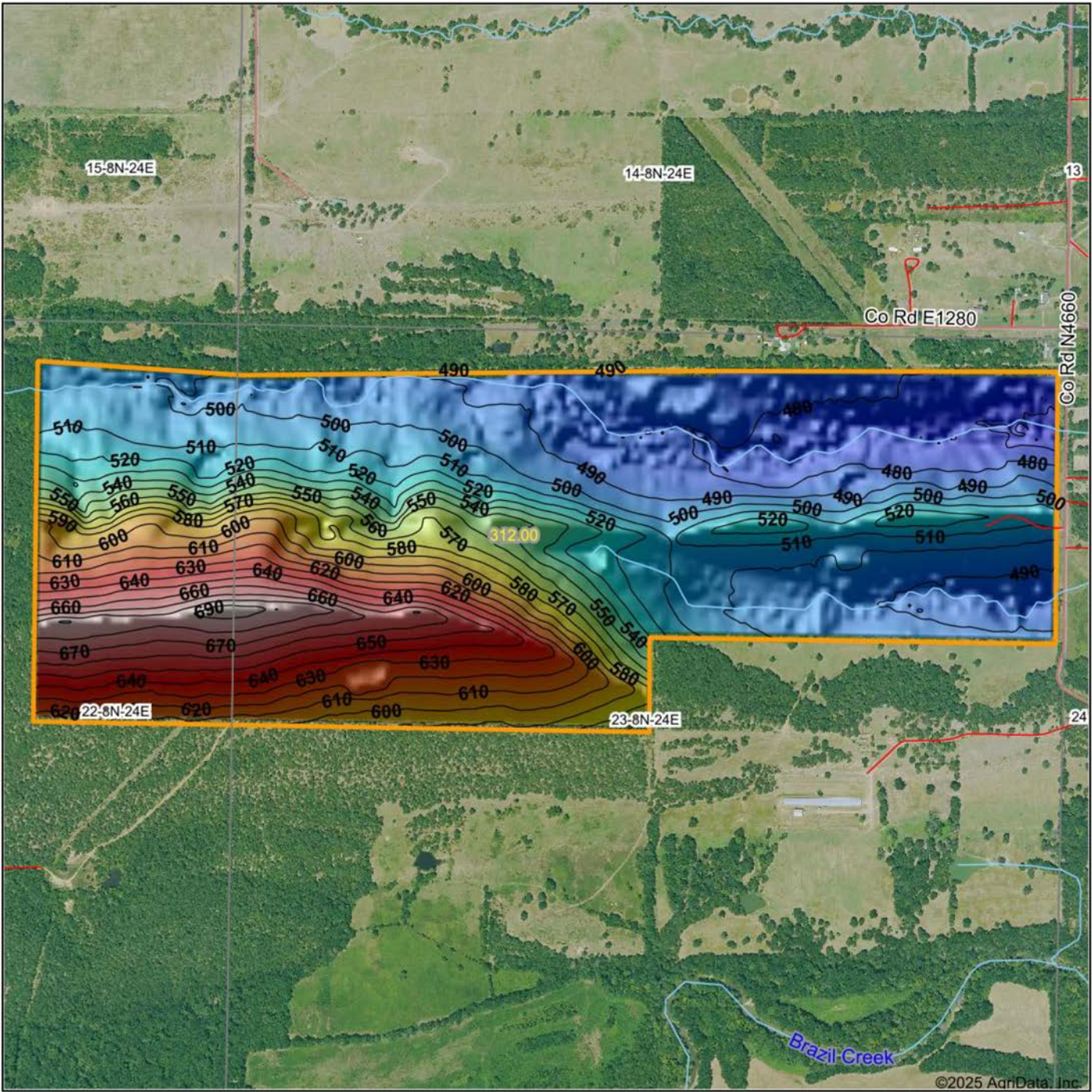
9/26/2025

**23-8N-24E**  
**Le Flore County**  
**Oklahoma**

Boundary Center: 35° 9' 20.79, -94° 44' 45.75



# HILLSHADE MAP



Low Elevation High



Maps Provided By:  
**surety**  
CUSTOMIZED ONLINE MAPPING  
© AgriData, Inc. 2023 www.AgriDataInc.com

Source: USGS 10 meter dem  
Interval(ft): 10  
Min: 465.3  
Max: 696.6  
Range: 231.3  
Average: 545.4  
Standard Deviation: 64.27 ft

0ft 999ft 1998ft



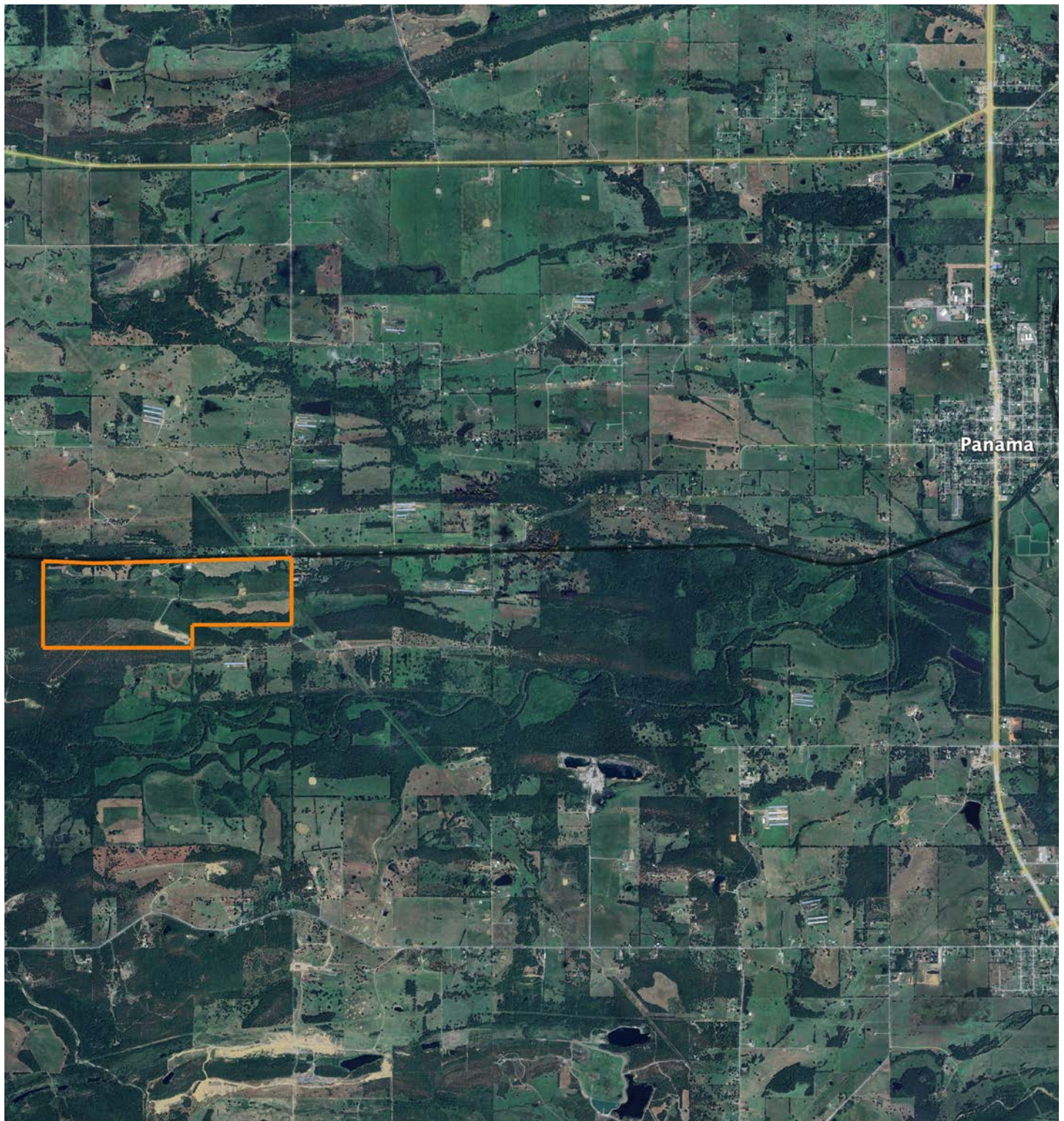
**23-8N-24E**  
**Le Flore County**  
**Oklahoma**

Boundary Center: 35° 9' 20.79, -94° 44' 45.75



# OVERVIEW MAP

---





# AGENT CONTACT

Heath Martin has deep roots in the heart of rural America. Growing up amidst the cattle and timber industries, he developed a lifelong passion for the outdoors, particularly hunting and fishing. With extensive knowledge of land management for cattle, timber, whitetail deer and hunting in the Midwest, Heath stands out as a leading land agent in the region.

Heath earned his wildlife biology degree from Arkansas Tech University. Before joining Midwest Land Group, he gained diverse experience in land surveying, the oil and gas industry, wildlife management, and with the National Forest Service. "My love for land, the outdoors, and hunting is what drives me," Heath says. "Being a land agent allows me to blend all these passions into one fulfilling career. I truly enjoy connecting with buyers and sellers about their land needs."

Heath possesses a wealth of expertise in deeds, leases, environmental regulations, and land management, complemented by a notable track record in deer, turkey, and bear hunting. After successfully transforming his in-laws' family ranch from a working cattle operation into a premier hunting destination in the Ouachita Mountains, Heath and his wife, Lindsey, now reside in Osceola, Iowa. Together, they own and manage properties across multiple states, further enhancing his ability to assist clients in finding or developing their ideal hunting properties.

In addition to his real estate career, Heath is a published outdoor writer and videographer. He holds QDMA Level 1 certification and is a former national and world champion amateur 3D archer, with a passion for bowhunting across North America. Whether you're seeking a perfect piece of land for recreation, investment, or conservation, Heath is ready to help you achieve your goals. Start your journey by sharing your vision with him today.



**HEATH MARTIN**, LAND AGENT  
**641.351.6025**

HeathMartin@MidwestLandGroup.com



## MidwestLandGroup.com

This property is being offered by Midwest Land Group, LLC. 913.674.8010. All information provided by Midwest Land Group, LLC or their agents was acquired from sources deemed accurate and reliable, however we do not warrant its accuracy or completeness. Midwest Land Group, LLC assumes no liability for error, omission or investment results. Midwest Land Group, LLC. Licensed in Alabama, Arkansas, Illinois, Indiana, Iowa, Kansas, Kentucky, Louisiana, Minnesota, Mississippi, Missouri, Montana, Nebraska, Ohio, Oklahoma, South Dakota, Tennessee, Texas, Wisconsin, and Wyoming.