

MIDWEST LAND GROUP PRESENTS

12 ACRES IN

---

# LAMAR COUNTY ALABAMA



[MidwestLandGroup.com](http://MidwestLandGroup.com)



MIDWEST LAND GROUP IS HONORED TO PRESENT

# 12 +/- ACRE TURN-KEY HOMESITE IN LAMAR COUNTY, ALABAMA

Located in Millport, Alabama, this beautiful 12 +/- acre property offers a turn-key homesite surrounded by natural beauty and charm. The homesite is ready for your dream build, with power and well water already in place.

Additionally, county water and fiber optic internet are available at the road, giving you modern convenience in a peaceful country setting.

The land features approximately 10 +/- acres of mature hardwood timber, offering privacy, shade, and a stunning natural backdrop. With gravel road frontage and just 0.25 miles from the nearest paved road, access is easy while maintaining that desirable sense of seclusion.

Whether you're looking to build your forever home, a weekend retreat, or invest in a serene rural escape, this property provides a rare blend of readiness, privacy, and potential.



## PROPERTY FEATURES

PRICE: **\$82,500** | COUNTY: **LAMAR** | STATE: **ALABAMA** | ACRES: **12**

- Rural land
- Turn-key homesite
- Power and well water at homesite
- County water and fiber optic internet are available
- Mature hardwood timber
- Road frontage
- 0.75 miles off of Highway 17
- 32 miles from Columbus, MS
- 48 miles from Tuscaloosa, AL



# TURN-KEY HOMESITE

---

The homesite is ready for your dream build, with power and well water already in place. Additionally, county water and fiber optic internet are available at the road, giving you modern convenience in a peaceful country setting.





# HUNTING OPPORTUNITIES

---



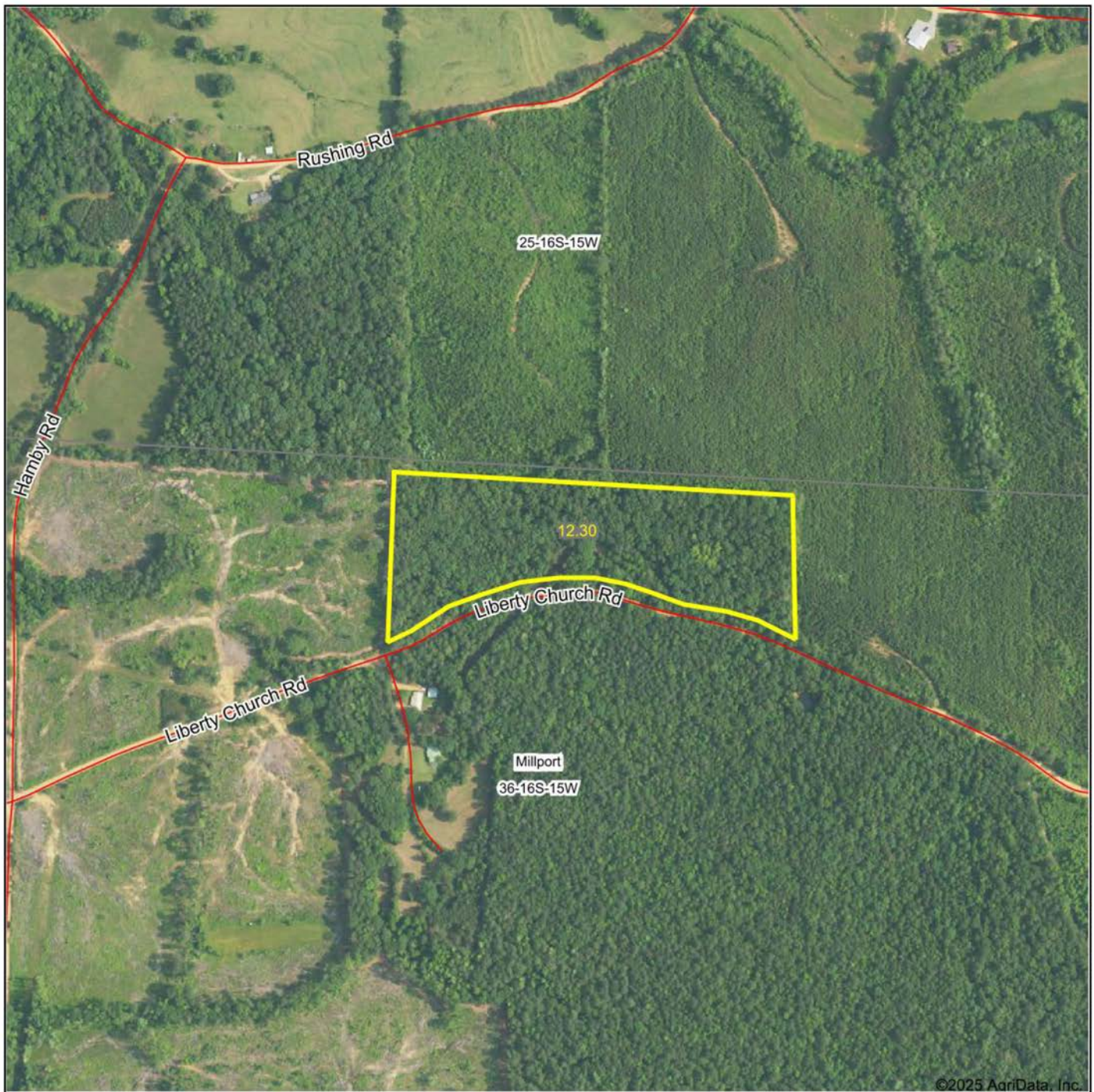
10 +/- ACRES MATURE HARDWOOD TIMBER

---





# AERIAL MAP



Boundary Center: 33° 37' 44.18, -88° 3' 30.6

0ft 522ft 1044ft

**36-16S-15W**  
**Lamar County**  
**Alabama**



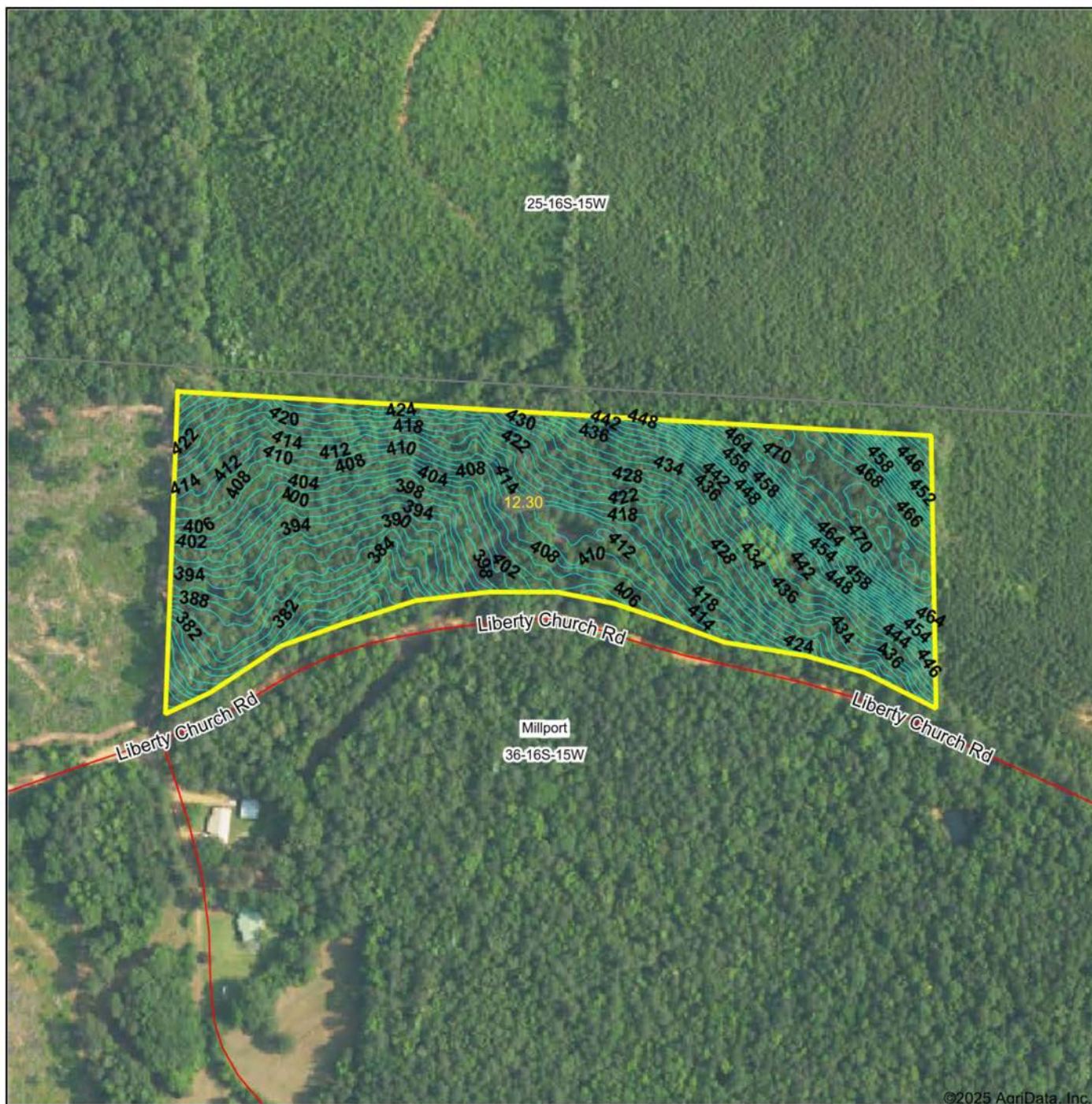
Maps Provided By:  
**surety**  
CUSTOMIZED ONLINE MAPPING  
© AgriData, Inc. 2023 www.AgriDataInc.com

9/22/2025

Field borders provided by Farm Service Agency as of 5/21/2008.



# TOPOGRAPHY MAP



©2025 AgriData, Inc.

Source: USGS 3 meter dem

Interval(ft): 2.0

Min: 366.4

Max: 475.0

Range: 108.6

Average: 420.5

Standard Deviation: 26.18 ft

0ft 278ft 556ft



9/22/2025

36-16S-15W

Lamar County

Alabama

Boundary Center: 33° 37' 44.18, -88° 3' 30.6

Maps Provided By:

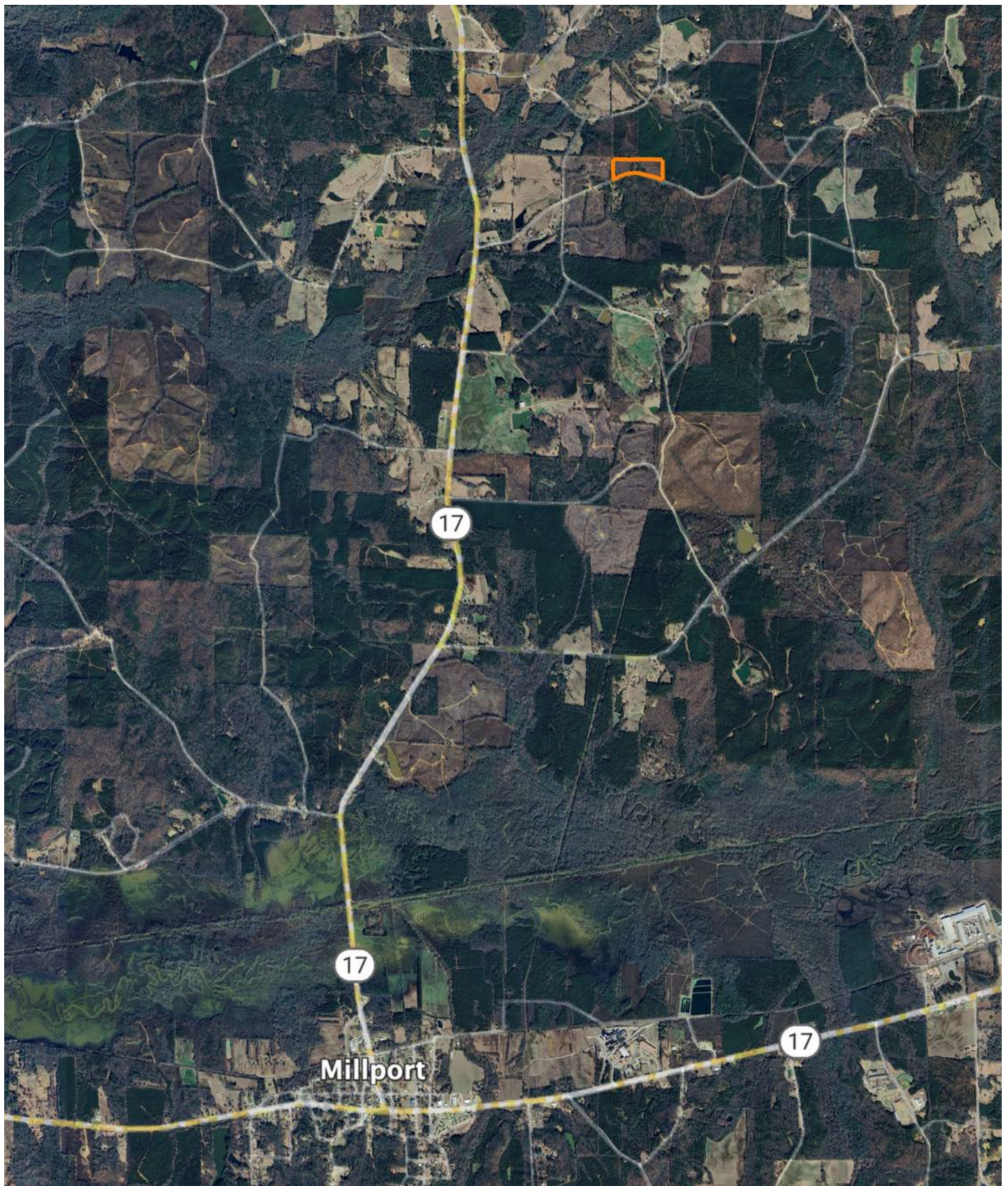


© AgriData, Inc. 2023 www.AgriDataInc.com

Field borders provided by Farm Service Agency as of 5/21/2008.



# OVERVIEW MAP





## AGENT CONTACT

---

Born and raised in Millport, Alabama, Trenton Wilson grew up where hunting, fishing and quality time with family in the outdoors weren't hobbies, they were a way of life. His upbringing left him with a lot more than memories – it gave him a soul-level understanding of the land, and a lifelong respect for the people who care for it.

After earning a degree from the University of Alabama, Trenton built a career in sales by doing things the right way — showing up, listening close, and delivering what he said he would. Those same values guide him today as a land agent. He takes the time to get to know his clients, how to market a property with purpose, and how to match a buyer to the kind of ground that fits their life.

Trenton serves all of Alabama with a sharp eye and steady hand. He's an active member of Springhill Baptist Church and the kind of guy who believes that trust isn't given, it's earned.



**TRENTON WILSON**

LAND AGENT

**205.431.3777**

[TWilson@MidwestLandGroup.com](mailto:TWilson@MidwestLandGroup.com)



## MidwestLandGroup.com

This property is being offered by Midwest Land Group, LLC. 913.674.8010. All information provided by Midwest Land Group, LLC or their agents was acquired from sources deemed accurate and reliable, however we do not warrant its accuracy or completeness. Midwest Land Group, LLC assumes no liability for error, omission or investment results. Midwest Land Group, LLC. Licensed in Alabama, Arkansas, Illinois, Indiana, Iowa, Kansas, Kentucky, Louisiana, Minnesota, Mississippi, Missouri, Montana, Nebraska, Ohio, Oklahoma, South Dakota, Tennessee, Texas, Wisconsin, and Wyoming.