

LAND FOR SALE

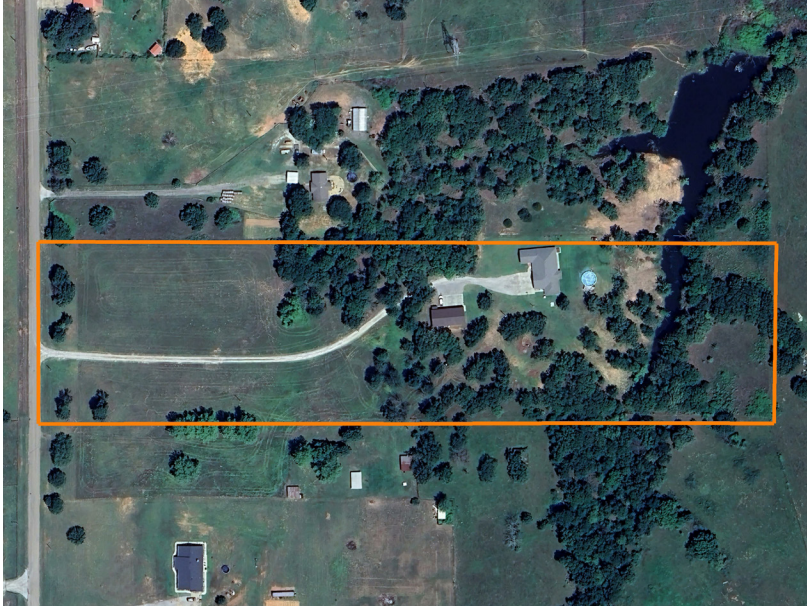
# CUSTOM 4-BED HOME ON 10 ACRES WITH 30'X60' SHOP LOCATED BETWEEN OKC AND TULSA

PRICE: **\$498,000**

COUNTY: **CREEK**

STATE: **OKLAHOMA**

ACRES: **10**



## PROPERTY FEATURES

- City on paved road
- Built in 2016, 4 bedrooms, 2 bathrooms
- Open floor plan with vaulted ceilings and a spacious living area
- Large kitchen island with oversized refrigerator
- Master suite with jetted tub and separate shower
- 2-car garage
- Above-ground pool and hot tub
- Storm shelter
- 30'x60' insulated shop
- 15'x30' finished room with mini split (ideal for office or hobby space)
- Remaining shop area is heated with ample workspace/storage

For more information, contact:

**SUMMER WITTY**, Land Broker

**918.798.1561** | [SWitty@MidwestLandGroup.com](mailto:SWitty@MidwestLandGroup.com)

**MidwestLandGroup.com**



This property is being offered by Midwest Land Group, LLC, 7111 W. 151st Street, Ste. 27, Overland Park, KS 66223, 913.674.8010. Licensed in AL, AR, IL, IN, IA, KS, KY, LA, MN, MS, MO, MT, NE, OH, OK, SD, TN, TX, WI, and WY.

