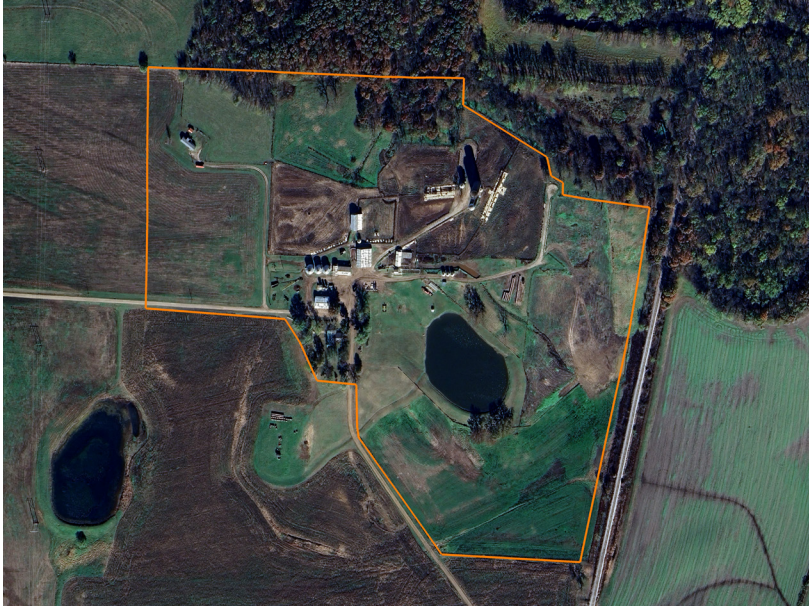


LAND FOR SALE

PASTURE, FEEDLOT, AND HOMESTEAD

COUNTY: **BATES**
STATE: **MISSOURI**
ACRES: **56**



PROPERTY FEATURES

- Can purchase additional acreage or less acreage
- Butler R-5, MO School District
- Nearly 3,000 square foot 4 bed 3 bath home
- Pond
- 36'x53' shop with water, electric, and concrete
- 50'x68' three-sided machine shed
- 20'x60' barn with cattle working facility, water, and electric
- 20 +/- acre feedlot
- Steel pipe fencing & continuous panels
- Scale & scale house
- 1,000'+ of concrete feed bunks
- Multiple fenced-in paddocks, Johnson waterers, and grain bins

For more information, contact:

DEREK PAYNE, Land Agent

573.999.4574 | DPayne@MidwestLandGroup.com

MidwestLandGroup.com



This property is being offered by Midwest Land Group, LLC, 7111 W. 151st Street, Ste. 27, Overland Park, KS 66223, 913.674.8010. Licensed in AL, AR, IA, IL, IN, KS, KY, LA, MN, MO, MS, MT, NE, OH, OK, SD, TN, TX, WI, and WY.