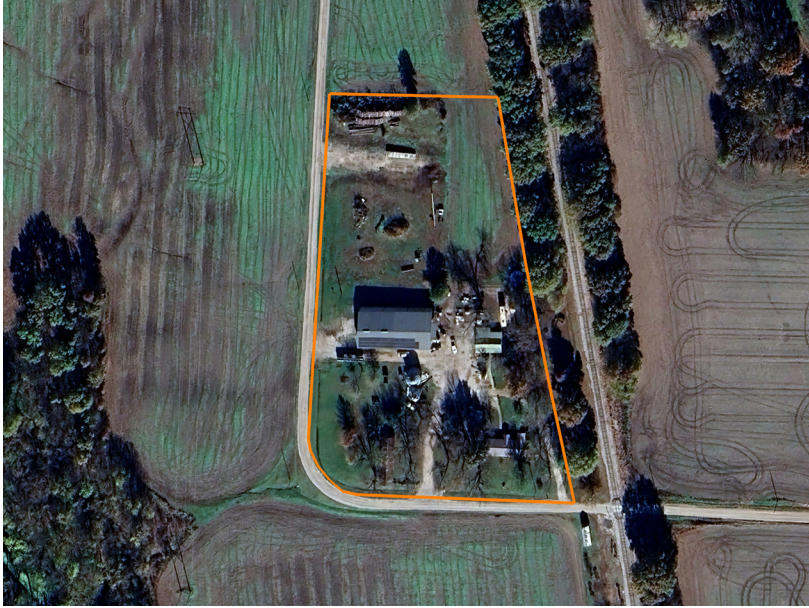


LAND FOR SALE

LARGE 60'X120'X18' SHOP, HOME, AND BUNKHOUSE

COUNTY: **BATES**
STATE: **MISSOURI**
ACRES: **4.3**



PROPERTY FEATURES

- 1,500 +/- square feet 3 bed, 2 bath home
- Fiber internet located at the road
- 720 +/- square foot bunkhouse/cabin
- Massive 60'x120'x18' red iron shop
- 60'x60' portion of shop has insulation, heat, water, electric, and concrete
- Office and 2 full bathrooms in shop
- 16'x26' hangar door and two 10'x10' garage doors
- Mezzanine is a shop for storage
- Remaining 60'x60' portion of shop with electricity, 4' concrete stem wall, and dirt floor
- 20'x78' three-sided shed and portable garden shed
- 20'x24' detached garage
- Newer grain bin and bulk bin
- Large gravel driveway and circle drive
- Solar panels on top of the shop

For more information, contact:

DEREK PAYNE, Land Agent

573.999.4574 | DPayne@MidwestLandGroup.com

MidwestLandGroup.com



This property is being offered by Midwest Land Group, LLC, 7111 W. 151st Street, Ste. 27, Overland Park, KS 66223, 913.674.8010. Licensed in AL, AR, IA, IL, IN, KS, KY, LA, MN, MO, MS, MT, NE, OH, OK, SD, TN, TX, WI, and WY.